

SIRA / TYC

2023 Course Packet Class - D

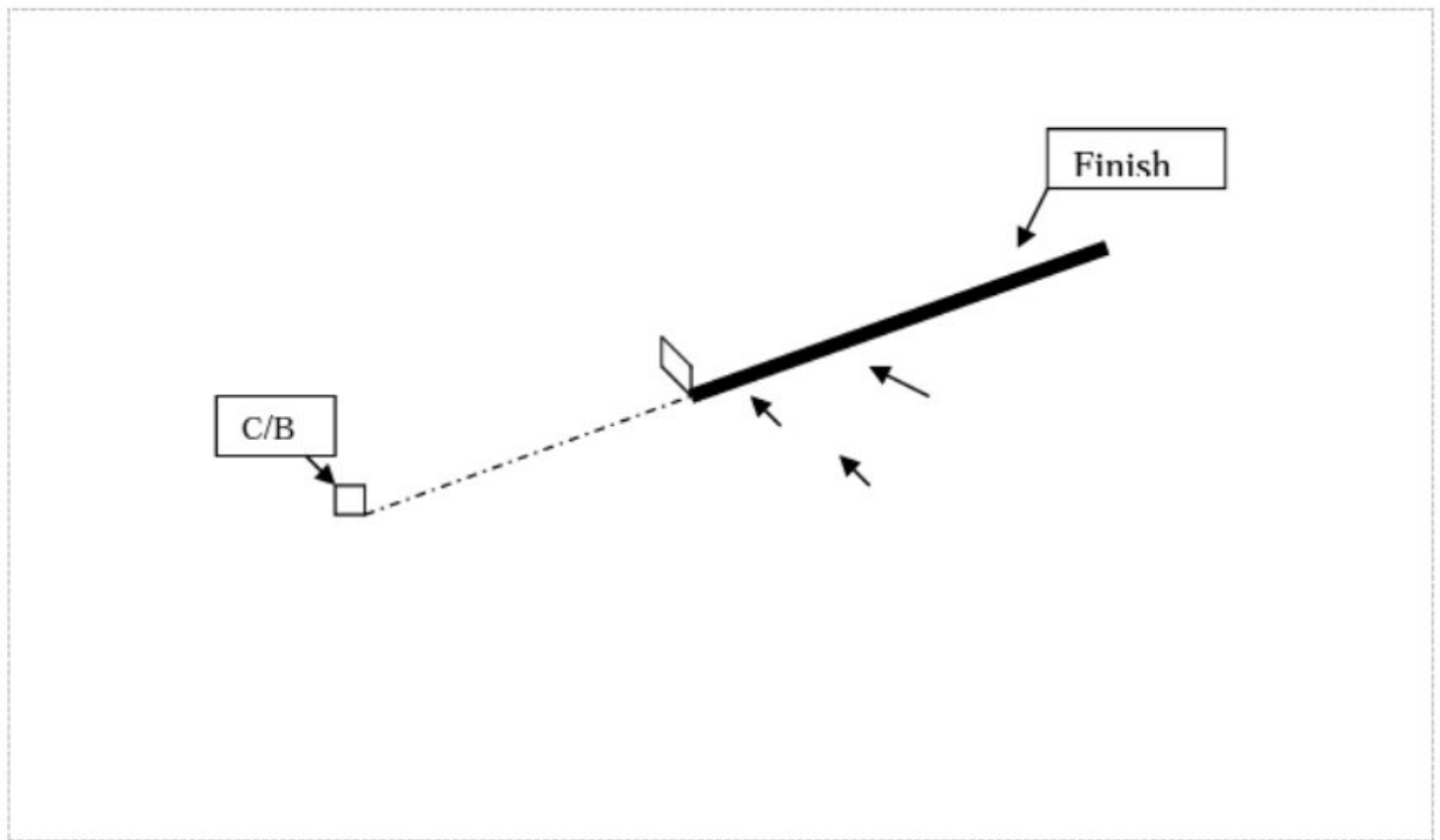
Changes from the last (2019) Chart Kit:

- 1) Addition of a new mark (Mark Z - C3 adjacent Hog Island Light)
- 2) Addition of a new course (course 14) which is the same as course 11D

Finish for Shortened Race

Finish A boat finishes when any part of her hull, or crew or equipment in normal position, crosses the finishing line **in the direction of the course from the last mark**,

In the interest of safety and not having committee boat anchor in the shipping channel, if a course is shortened at a normal turning mark the finish line will be line of sight using a compass heading from the committee boat to the mark, finish line will be from the mark past and continuing on the same compass heading from the committee boat. **All boats will sail the course as if the race was not shortened.**



Course	Distance NM	Start	1st Mark	NM	2nd Mark	NM	3rd Mark	NM	4th Mark	NM	5th Mark	NM	6th Mark	NM	Wind (M)
1 ABC	7.02	C	A-p	2.15	L-s	4.23	G-p	5.51	H-p	6.13	C(Fin)	7.02			N (346-026)
D	5.12	C	A-p	2.15	C/CB-gate	4.3	K-p	4.71	C(Fin)	5.12					N (346-026)
2 ABC	5.86	K	O-s	1.2	K-p	2.4	P-p	4.13	K(Fin)	5.86					NE (026-069)
D	4.8	K	O-s	1.2	K-p	2.4	O-p	3.6	K(Fin)	4.8					NE (026-069)
3 ABC	6.2	C	P-p	1.73	C-p	3.46	N-p	4.83	C(Fin)	6.2					ENE (040-080)
D	5.48	C	N-p	1.37	C-p	2.74	N-p	4.11	C(Fin)	5.48					ENE (040-080)
4 ABC	6.06	J	K-s	0.77	E-s	2.5	J/CB gate	3.52	M-p	4.79	J(Fin)	6.06			E (069-118)
D	5.06	J	K-s	0.77	E-s	2.5	J/CB gate	3.52	K-p	4.29	J(Fin)	5.06			E (069-118)
5 ABC	6.06	L	K-p	0.5	A-p	2.98	L/CB	5.06	K-p	5.56	L(Fin)	6.06			SE (118-165)
D	4.24	L	K-s	0.5	H-s	1.16	L-s	2.12	K-s	2.62	H-s	3.25	L(Fin)	4.24	SE (118-165)
6 ABC	6.46	L	H-s	0.96	X-s	1.98	L-p	3.9	G-p	5.18	L(Fin)	6.46			S (165-200)
D	4.9	L	H-p	0.96	M-p	2.33	Lp	2.98	Hs	3.94	L(Fin)	4.9			S (165-200)
7 ABC	6.33	L	G-p	1.28	M-p	3.12	CB/L gate	3.77	G-p	5.05	L(Fin)	6.33			SSW (200-227)
D	6.33	L	G-p	1.28	M-p	3.12	L-N6 gate	3.77	G-p	5.05	L(Fin)	6.33			SSW (200-227)
8 ABC	6.72	L	G-p	1.28	L-p	2.56	A-p	4.64	L(Fin)	6.72					SSW (200-227)
D	4.84	L	G-p	1.28	L/CB gate	2.56	O-p	3.7	L(Fin)	4.84					SSW (200-227)
9 ABC	6.4	L	X-p	1.92	L-p	3.84	G-p	5.12	L(Fin)	6.4					SSW (200-227)
D	5.42	L	G-p	1.28	H-p	1.9	L-p	2.86	G-p	4.14	L(Fin)	5.42			SSW (200-227)
10 ABC	6.61	L	E-p	1.65	H-p	2.95	L-p	3.91	D-p	5.26	L(Fin)	6.61			SW (227-255)
D	5.4	L	Dp	1.35	L-p	2.7	D-p	4.05	L(Fin)	5.4					SW (227-255)
11 ABC	6.65	L	E-p	1.65	H-p	2.95	L-s	3.91	N-p	5.28	L(Fin)	6.65			WSW (227-255)
D	4.6	L	E-p	1.65	L/CB gate	3.3	M-p	3.95	L(Fin)	4.6					WSW (227-255)
12 ABC	7.06	K	J-p	0.77	E-p	1.8	K-p	3.53	J-p	4.3	E-p	5.33	K(Fin)	7.06	W (255-298)
D	4.49	K	J-p	0.77	D-p	1.52	K-p	2.95	J-p	3.72	K(Fin)	4.49			W (255-298)
13 ABC	5.92	K	C-s	0.41	M-p	1.06	A-p	2.96	M-s	4.86	C-p	5.51	K(Fin)	5.92	NW (298-346)
D	4.34	K	L-p	0.5	H-s	1.46	J-s	2.17	H-p	2.88	L-s	3.84	K(Fin)	4.34	NW (298-346)
14 ABC	8.08	L	Z-p	4.04	L (Fin)	4.04	8.08								WSW (210-255)
D	4.6	L	E-p	1.65	L/CB gate	3.3	M-p	3.95	L(Fin)	4.6					WSW (227-255)

A = N2 COLES RIVER	START L = G5 C.M.
B = N2 SPAR ISLAND	START C = N6 C.M.
C = N6 C.M.	START K = C5 TIVERTON
D = G1 C.M.	START J = R4 C.M.
E = MH C.M. Mt. Hope Junction gong	
F = C3 C.M.	
G = R4 FL. R 4s Bell Common Fence Pt.	
H = G3 FL. G 4s Gong Tiverton Shore	C/B = Comm. Boat
I = N4 Tiverton Shore	C.M. = Channel Marker
J = R4 C.M. Lt. Bell Bouy	
K = C5 Tanks No. Tiverton	
L = G5 C.M. FL G 4s Lt Bouy	
M = R8 C.M. Lt. Bell Bouy	
N = R10 C.M. Lt. Bell Bouy	
O = C9 C.M.	
P = C11 C.M. Lt. Bell Bouy	
Q = N2 NEP FI/R 4s	
X = C17 Sak. River	
Z = C3 Hog Island Light	

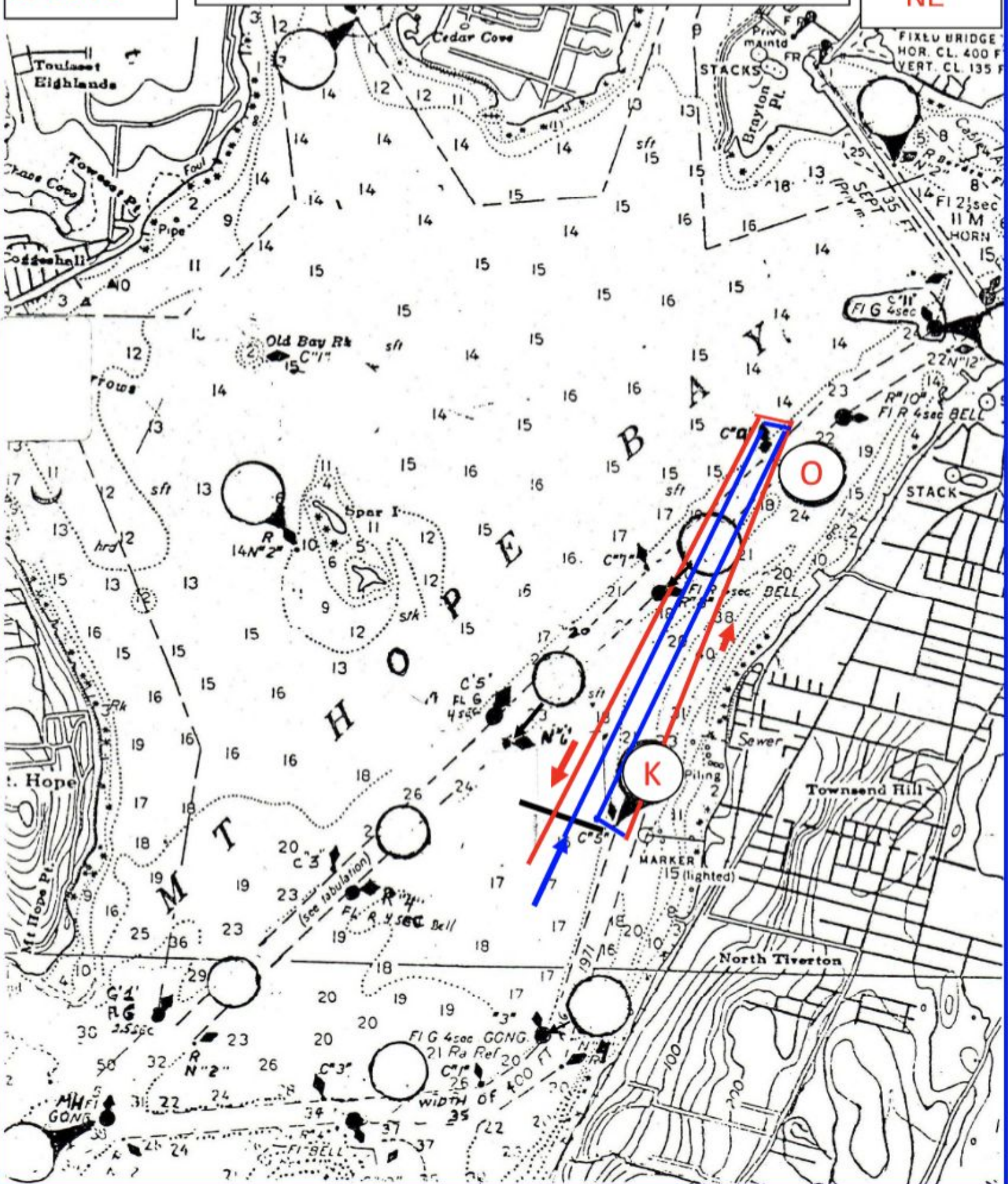
026° - 069°

ed 2018

K start - Os -- Kp -- Op -- K finish
(shorten @ K 2.4 miles)

4.8 miles

2D
NE



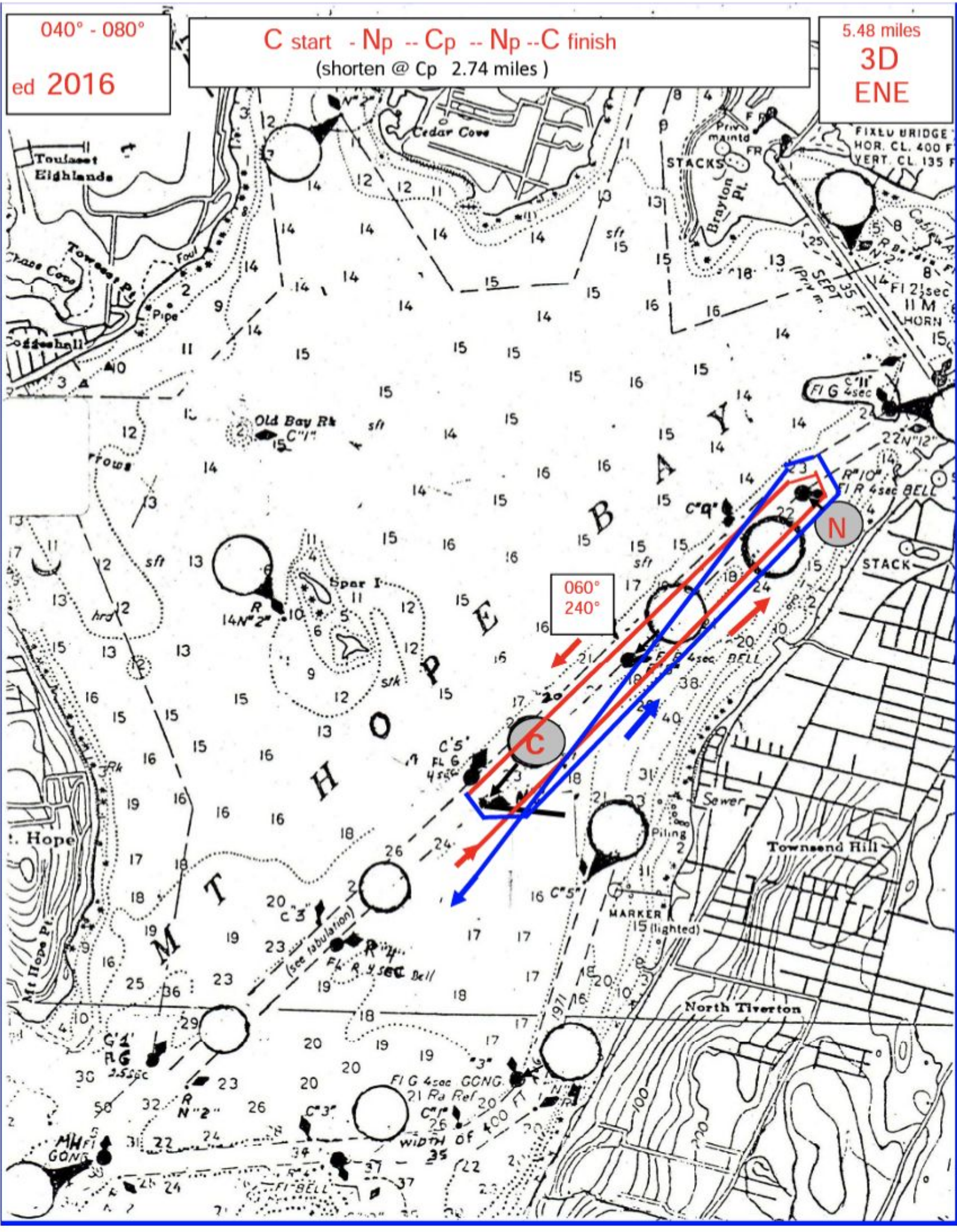
040° - 080°

ed 2016

C start - Np -- Cp -- Np -- C finish
(shorten @ Cp 2.74 miles)

5.48 miles

3D
ENE



069° - 118°

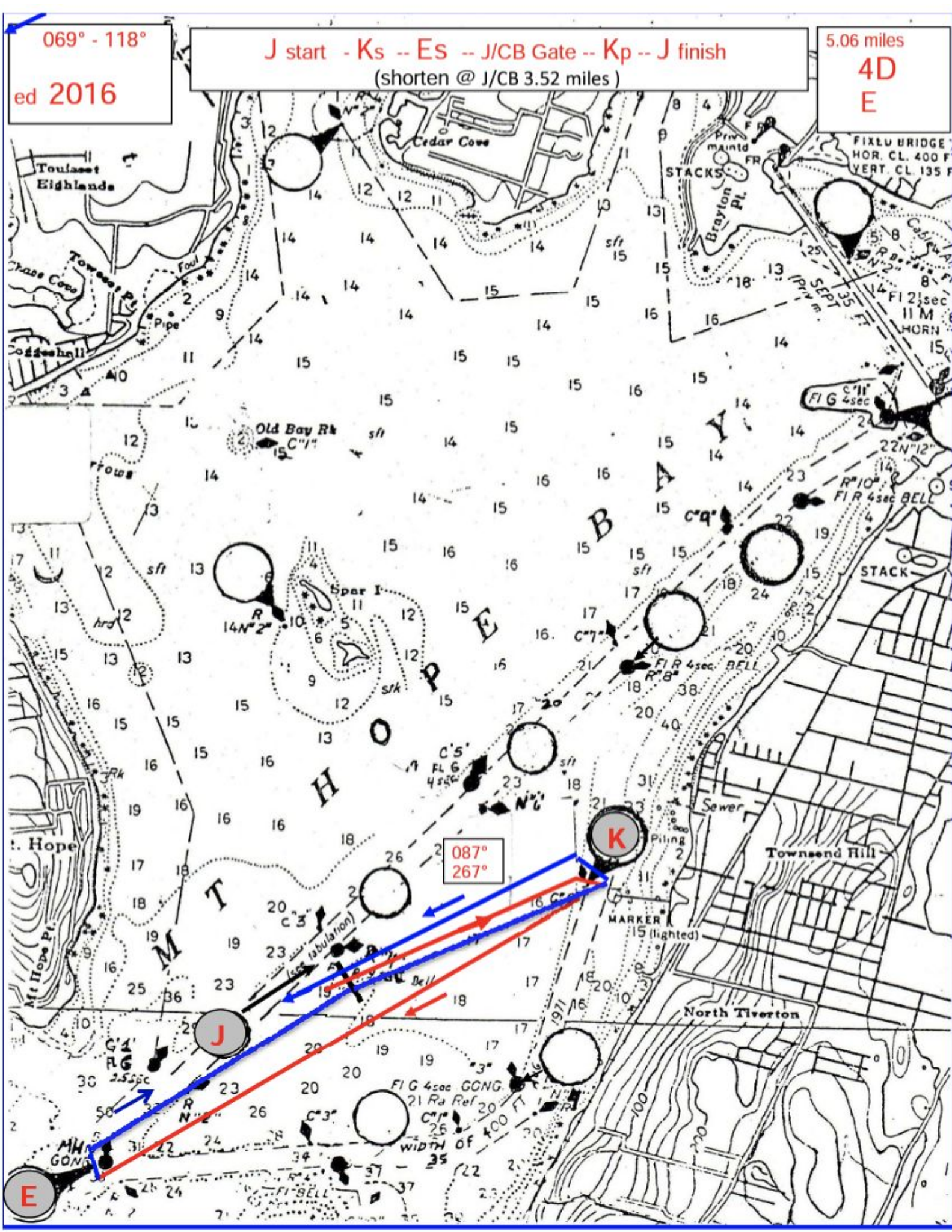
ed 2016

J start - Ks -- Es -- J/CB Gate -- Kp -- J finish
(shorten @ J/CB 3.52 miles)

5.06 miles

4D

E



118° - 165°

ed 2016

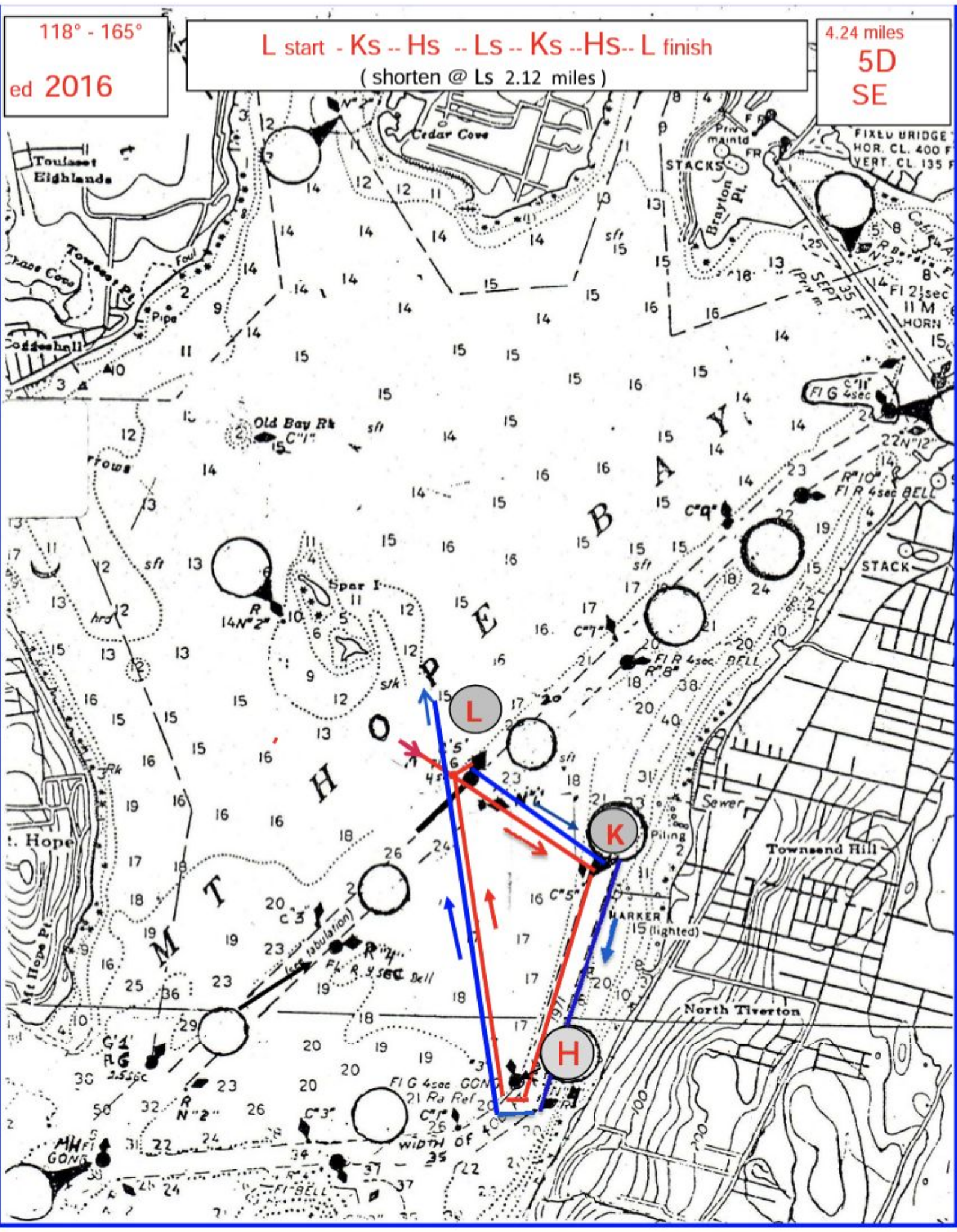
L start - Ks -- Hs -- Ls -- Ks -- HS -- L finish

(shorten @ Ls 2.12 miles)

4.24 miles

5D

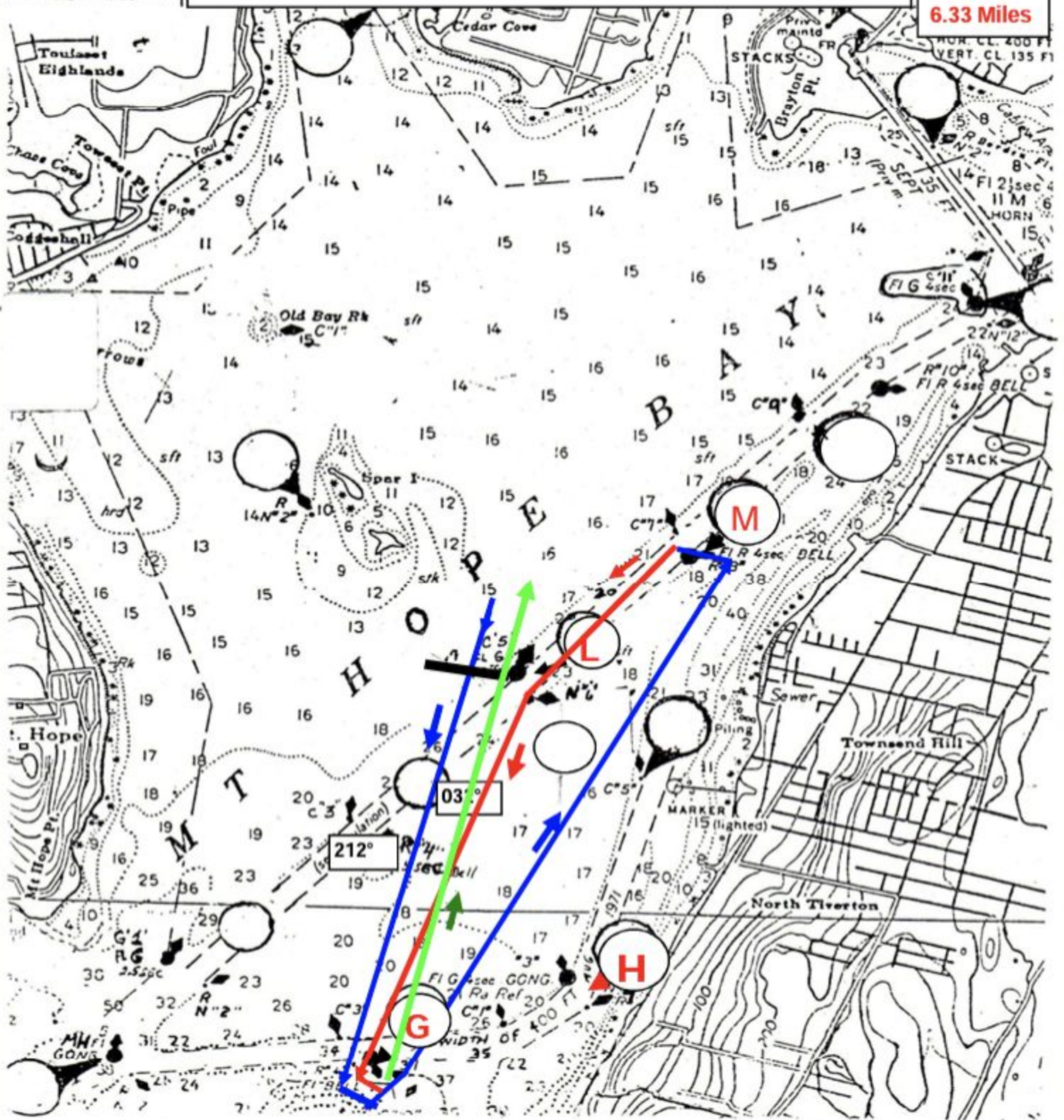
SE



200° - 227°
ed 2015-16

L-start to G-p to M-p to - L-N6 gate to G-p to L finish
(shorten @ - L-N6 3.77 miles)

7 D
SSW
6.33 Miles



200° - 227°

ed 2016

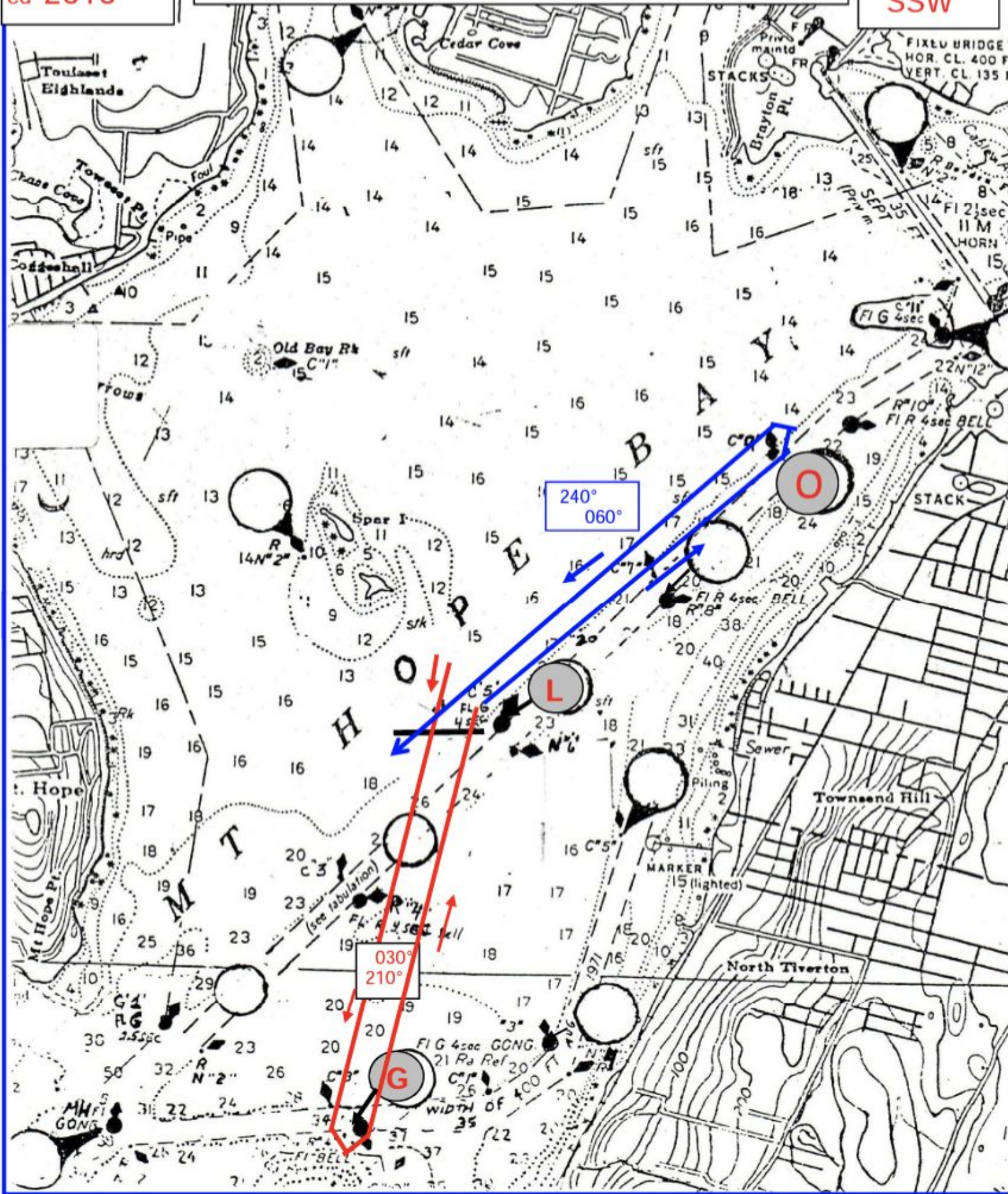
L-start - Gp -- L/CB gate -- Op -- L finish

(shorten @ L/CB 2.56 miles)

4.84 miles

8D

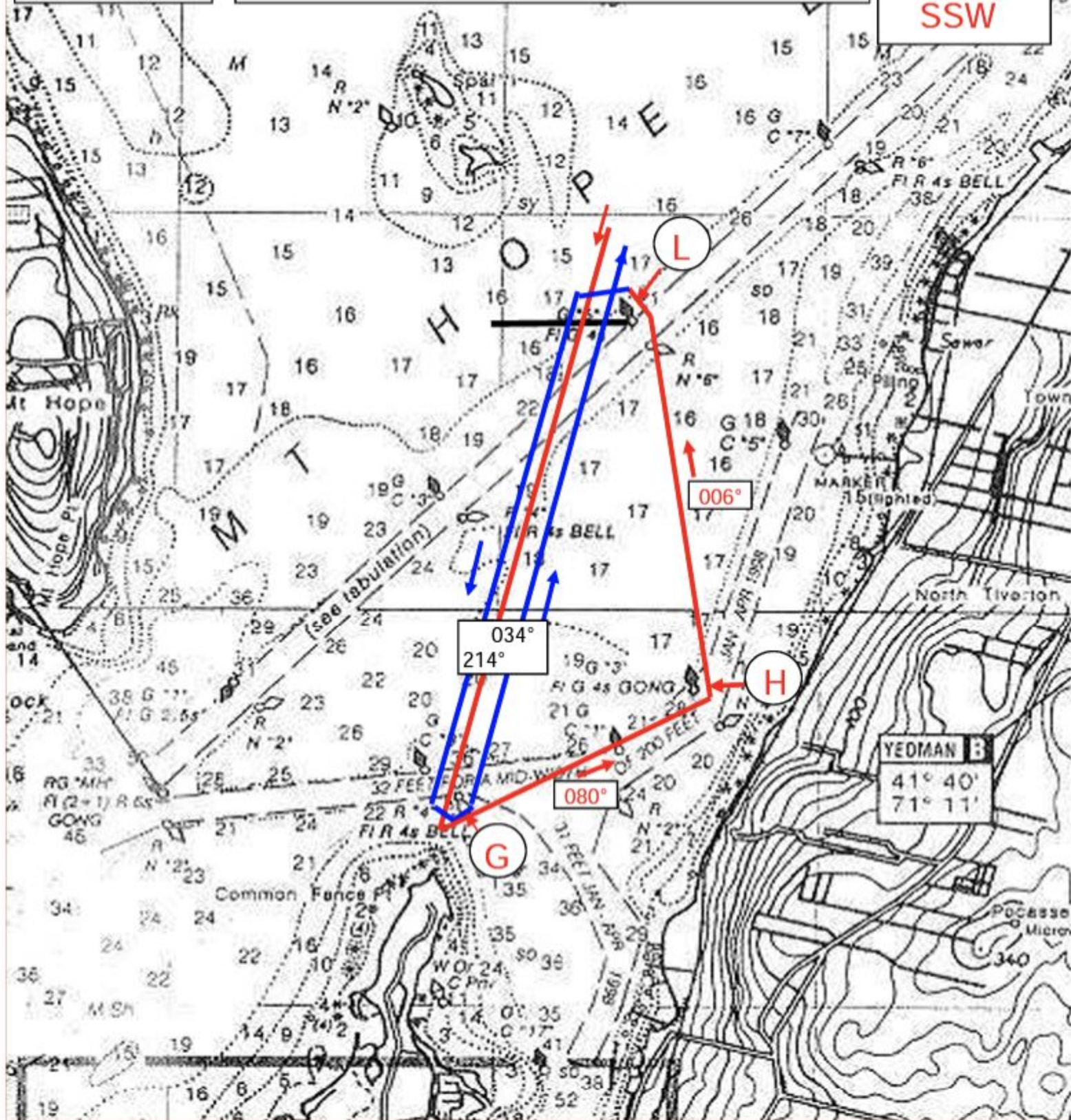
SSW



200°--227°
ed 2015-16

L start -- Gp -- Hp -- Lp -- Gp -- L finish
(shorten @ Lp 3.30 miles)

5.86 miles
9 D
SSW



227° - 255°

ed 2016

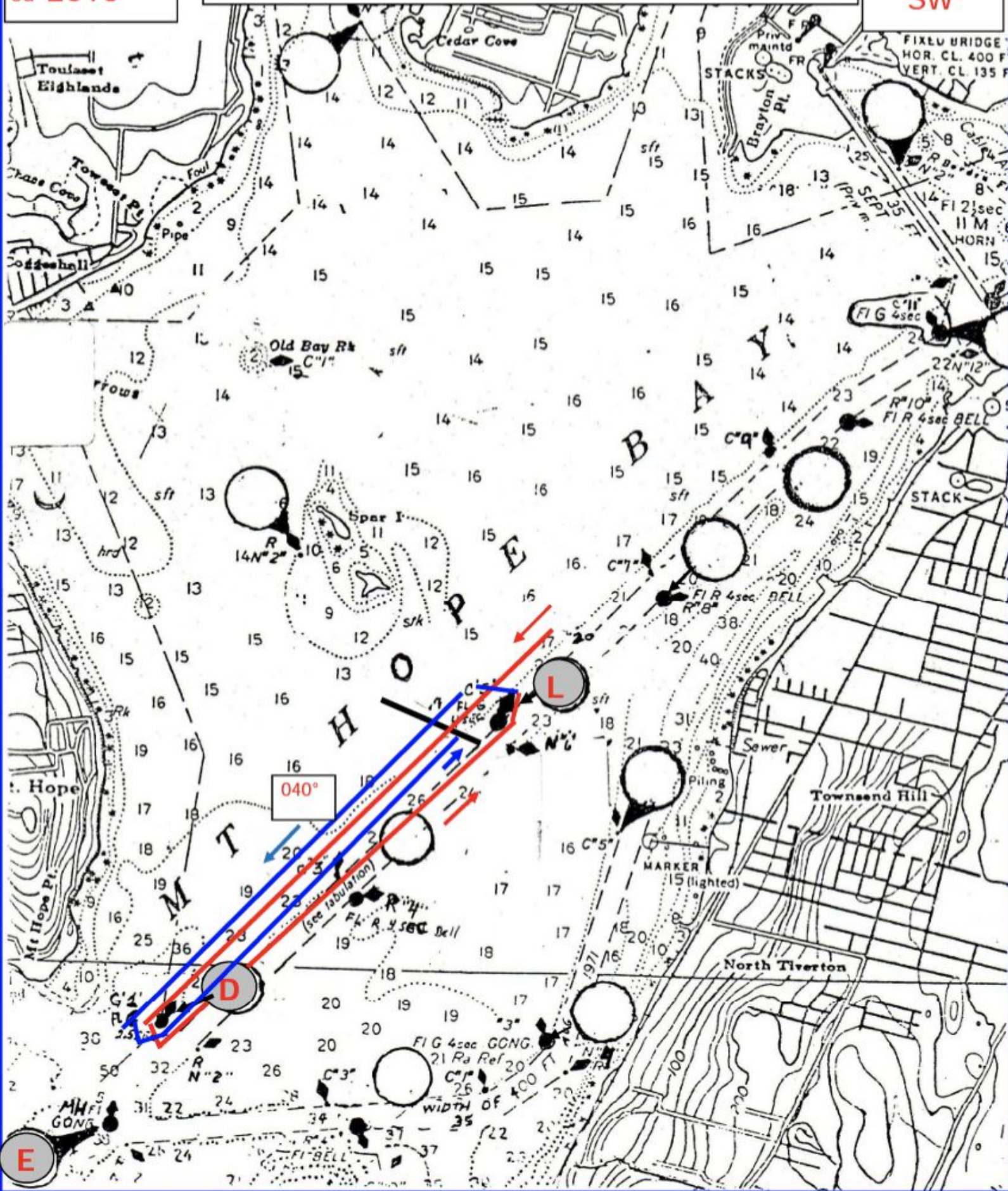
L start - Dp - Lp -- Dp -- L finish

(shorten @ Lp 2.7 miles)

5.40 miles

10 D

SW

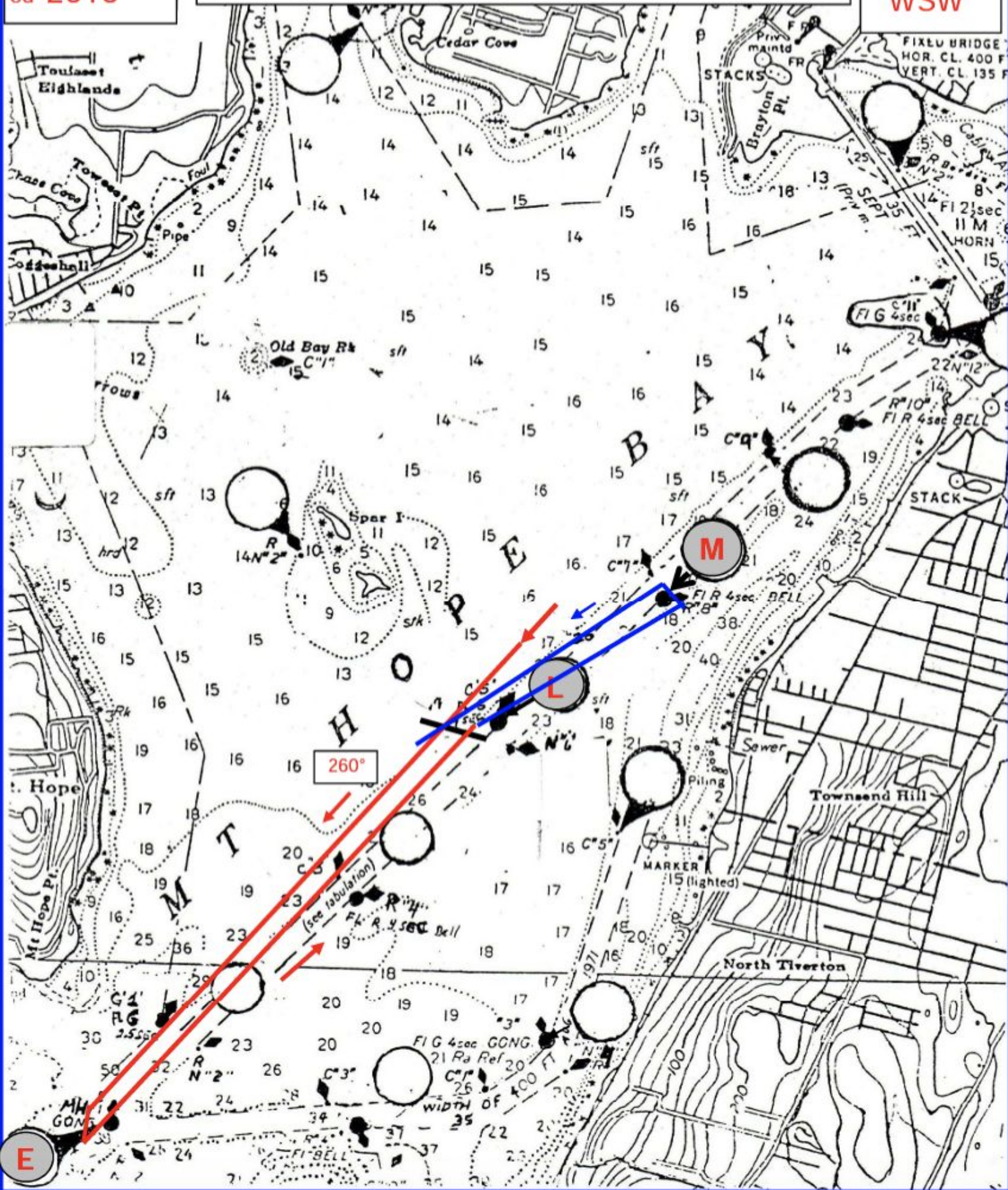


227° - 255°

ed 2016

L start - Ep -- L/CB gate -- Mp -- L finish
(shorten @ L/CB 3.30 miles)

4.60 miles
11D
WSW



255° - 298°

ed 2019

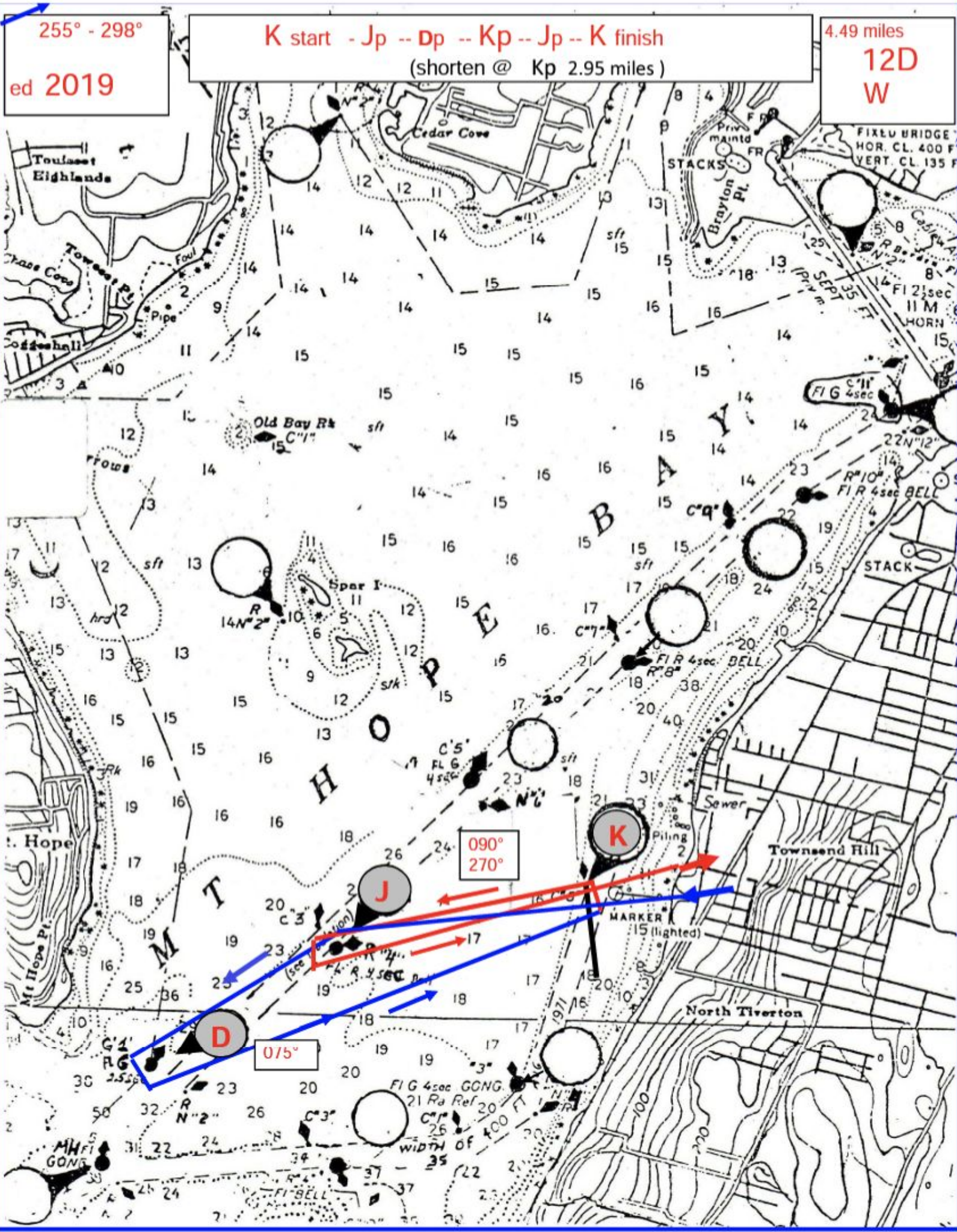
K start - Jp -- Dp -- Kp -- Jp -- K finish

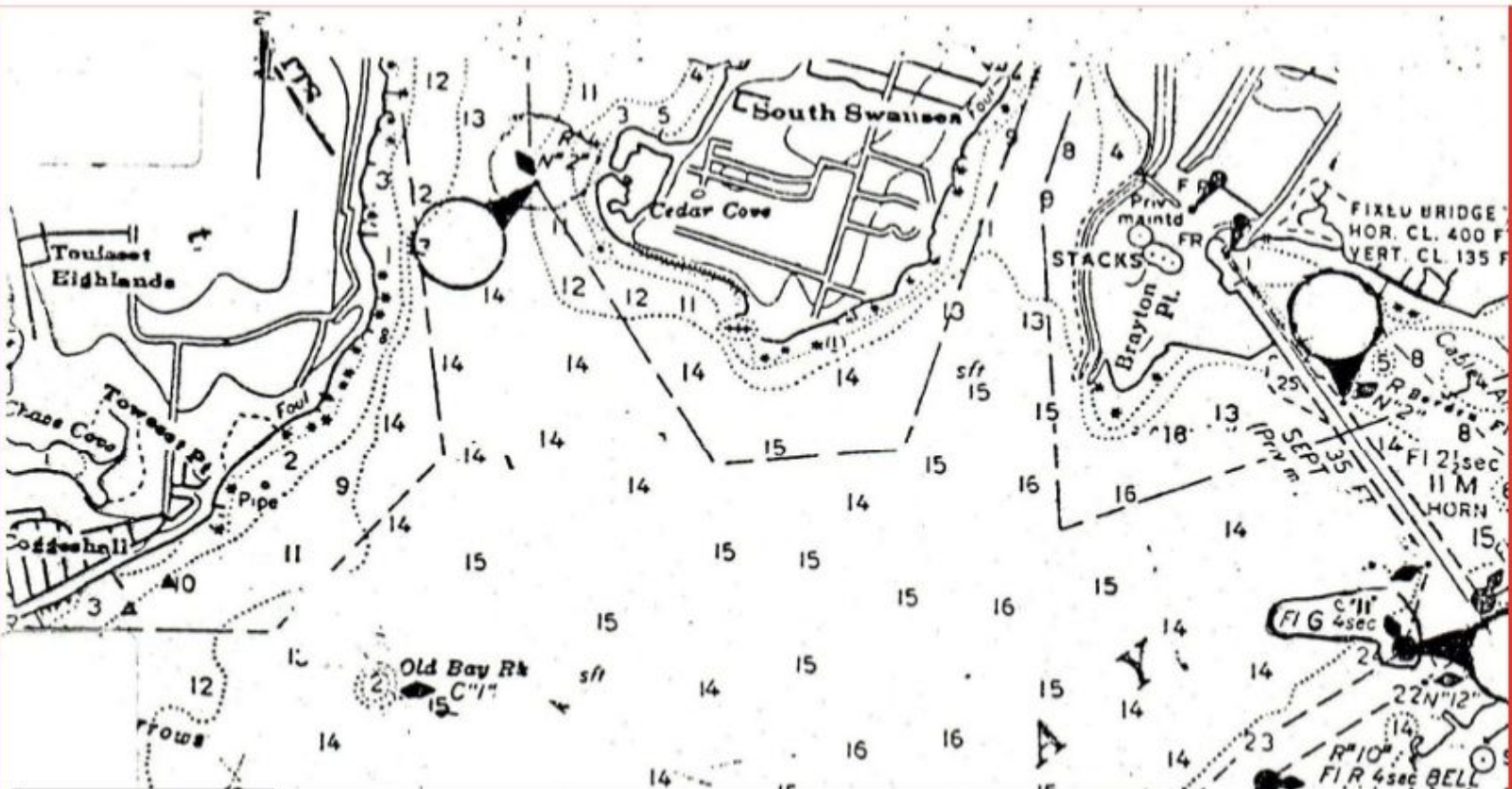
(shorten @ Kp 2.95 miles)

4.49 miles

12D

W

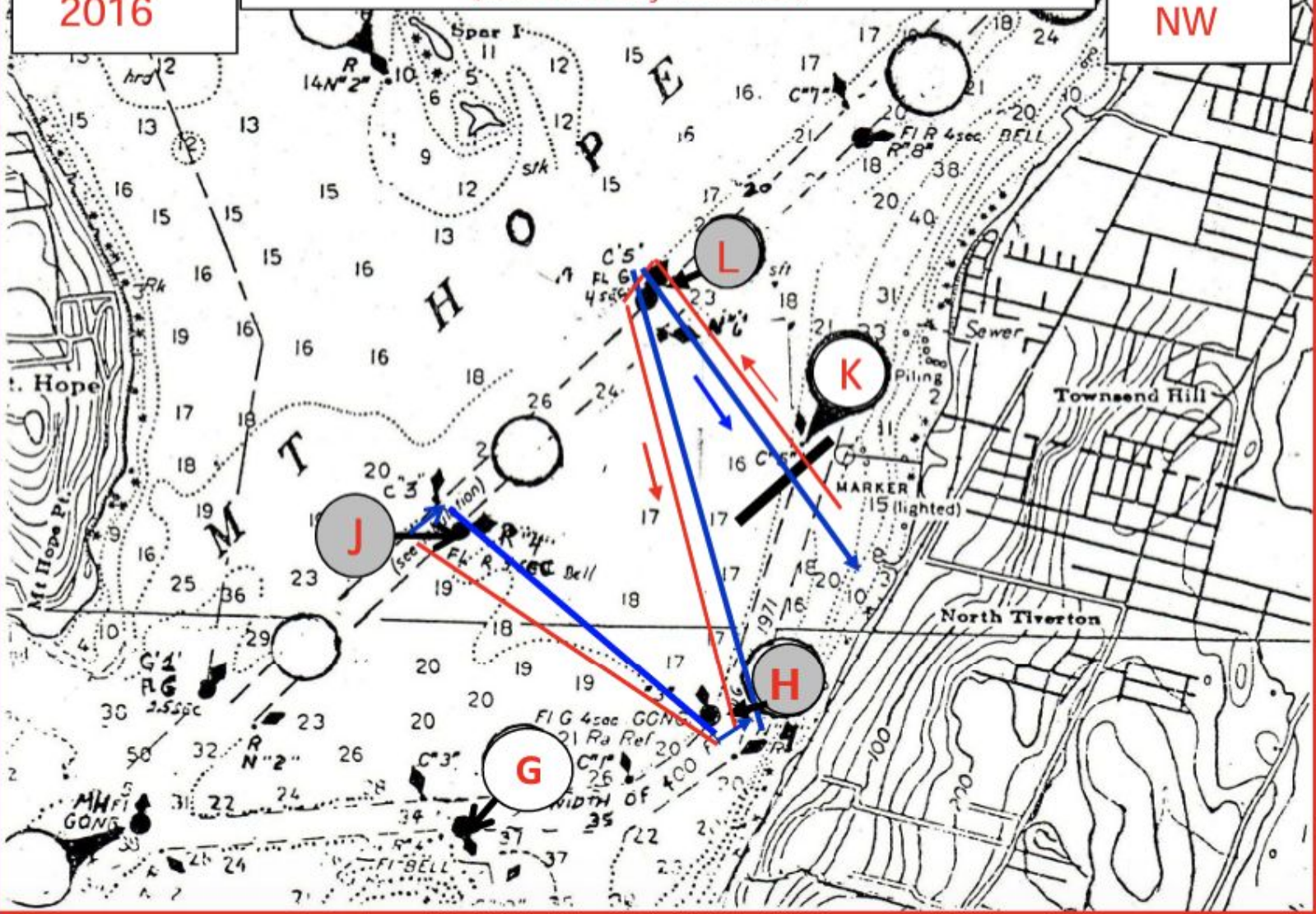


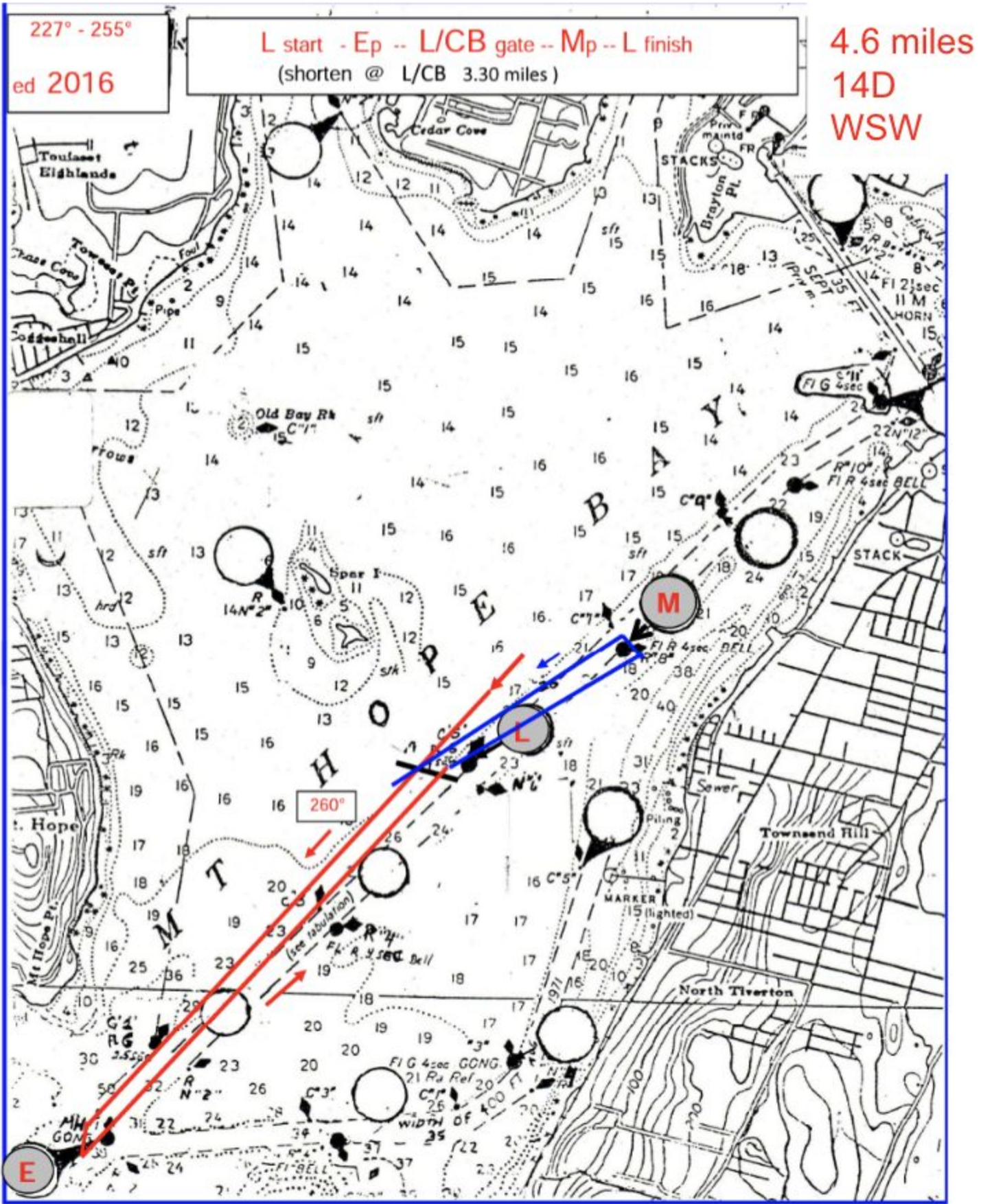


298° - 346°
2016

K start - Lp -- Hs -- JS -- Hp -- Ls -- K finish
(full course only 4.34 miles)

4.34 miles
13D
NW





Note - This course is the same as Course 11D