

# SIRA / TYC

## 2026 Course Packet Spinnaker (Version: 2.3.26)

### Changes:

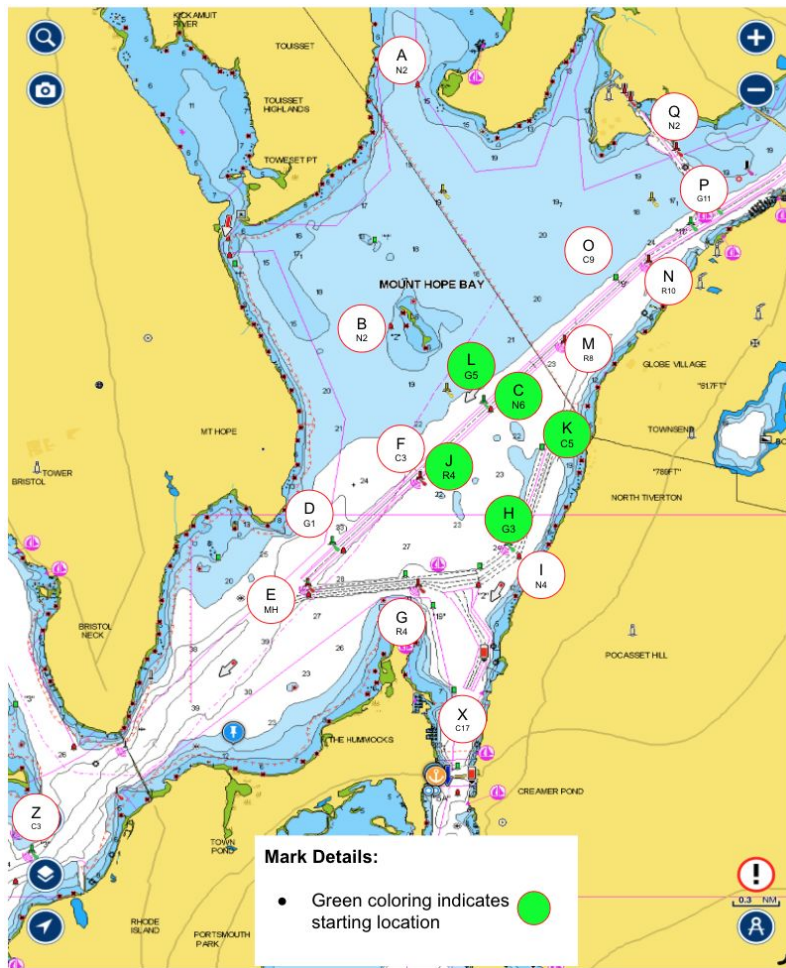
1. Course 4 - all roundings are now to starboard
2. Course 11 - the Mount Hope Bridge Course is now using the bridge stanchions as marks of the course.

# 3 Class - Staggered Starting Sequence

GPS Time	SIGNAL	SOUND	COMMENT	FLAGS
6:14	Come Around Signal	Multiple Short Blasts	1 minute before first warning	No Flag
6:15	WARNING	1 Blast	Display Pennant #1	 1
6:16	PREPARATORY C	1 Blast	Display Prep #1 remains	 1 
6:19	1 MINUTE to C start	1 Blast	Remove Prep #1 remains	 1
6:20	START C	1 Blast	Remove #1 Display Pennant #2	 2
6:21	PREPARATORY B	1 Blast	Display prep #2 remains	 2 
6:24	1 MINUTE to B start	1 Blast	Remove prep #2 remains	 2
6:25	START B	1 Blast	Remove #2 Display Pennant #3	 3
6:26	PREPARATORY A	1 Blast	Display prep #3 remains	 3 
6:29	1 MINUTE to A start	1 Blast	Remove prep #3 remains	 3
6:30	START A	1 Blast	Remove #3 Display Pennant #4	 4

# Spinnaker Classes

## Marks and Courses



Course	Distance	Start	1st		2nd		3rd		4th		5th		6th		7th		Wind (M)	
			NM	Mark	NM	Mark	NM	Mark	NM	Mark	NM	Mark	NM	Mark	NM	Mark		
1	A	7.03	C	A-p	2.17	L-s	4.28	G-p	5.54	H-p	6.14	C(Fin)	7.03				N (350°)	
	B	5.13	C	A-p	2.17	Gate(C-CB)	4.34	K-p	4.73	C(Fin)	5.13						335-15	
2	A	6.53	K	Q-p	2.07	K-p	4.13	O-p	5.33	K(Fin)	6.53						NE(20°)	
	B	4.80	K	O-p	1.20	K-p	2.40	O-p	3.60	K(Fin)	4.80						5-35	
3	A	6.20	C	P-p	1.73	C-p	3.46	N-p	4.83	C(Fin)	6.20						ENE(45°)	
	B	5.47	C	N-p	1.37	C-p	2.74	N-p	4.11	C(Fin)	5.47						25-65	
4	A	4.97	J	K-s	0.77	E-s	2.45	Gate(J-CB)	3.43	K-p	4.20	J(Fin)	4.97				ENE(75°)	
	B	4.97	J	K-s	0.77	E-s	2.45	Gate(J-CB)	3.43	K-p	4.20	J(Fin)	4.97				50-100	
5	A	5.99	L	K-p	0.47	A-p	2.95	Gate(J-CB)	5.06	K-p	5.52	L(Fin)	5.99				SE(135°)	
	B	6.4	L	K-p	0.47	N-p	1.80	L-p	3.20	K-p	3.60	N-p	5.00	L(Fin)	6.40		110-160	
6	A	6.39	L	H-s	0.94	X-s	1.96	L-p	3.86	G-p	5.13	L(Fin)	6.39				S (180°)	
	B	4.83	L	I-p	1.00	M-p	2.50	L-p	3.10	I-p	4.10	L(Fin)	5.10				160-200	
7	A	6.74	L	G-p	1.26	L-p	2.53	A-p	4.63	L(Fin)	6.74						SSW (185°)	
	B	4.80	L	G-p	1.26	Gate (L-CB)	2.53	O-p	3.67	L(Fin)	4.80						165-205	
8	A	6.34	L	X-p	1.90	L-p	3.81	G-p	5.07	L(Fin)	6.34						SSW (190°)	
	B	5.35	L	G-p	1.27	H-p	1.87	L-p	2.82	G-p	4.08	L(Fin)	5.35				170-210	
9	A	6.25	L	G-p	1.26	M-p	3.09	Gate(L-CB)	3.72	G-p	4.98	L(Fin)	6.25				SSW (205°)	
	B	6.25	L	G-p	1.26	M-p	3.09	Gate (L-C)	3.72	G-p	4.98	L(Fin)	6.25				185-225	
10	A	6.42	L	E-p	1.61	H-p	2.86	L-p	3.80	D-p	5.11	L(Fin)	6.42				WSW (220°)	
	B	5.23	L	D-p	1.31	L-p	2.62	D-p	3.92	L(Fin)	5.23						200-230	
11	A	6.40	L	Z-p	3.20	L(Fin)	6.40										WSW (225°)	
	B	6.44	L	E-p	1.61	L-p	3.22	E-p	4.83	L(Fin)	6.44						210-250	
12	A	5.81	K	J-s	0.77	M-s	2.02	K-s	2.73	J-s	3.50	K-s	4.27	J-s	5.04	K(Fin)	5.81	WSW (250°)
	B	4.27	K	J-s	0.77	M-s	2.02	K-s	2.73	J-s	3.50	K(Fin)	4.27					235-275
13	A	6.72	H	D-s	1.07	J-s	1.75	H-s	2.44	D-s	3.51	H-s	4.58	D-s	5.65	H(Fin)	6.72	W (270°)
	B	4.58	H	D-s	1.07	J-s	1.75	H-s	2.44	D-s	3.51	H(Fin)	4.58					255-300
14	A	5.85	K	C-s	0.40	M-p	1.03	A-p	2.93	M-s	4.82	C-p	5.45	K(Fin)	5.85			NNW (320°)
	B	4.19	K	L-p	0.46	H-s	1.41	J-s	2.10	H-p	2.79	L-s	3.73	K(Fin)	4.19			300-340

START L = G5 C.M.	A = N2 COLES RIVER	J = R4 C.M. Lt. Bell Bouy
START C = N6 C.M.	B = N2 SPAR ISLAND	K = C5 Tanks No. Tiverton
START K = C5 TIVERTON	C = N6 C.M.	L = G5 C.M. FL G 4s Lt Bouy
START J = R4 C.M.	D = G1 C.M.	M = R8 C.M. Lt. Bell Bouy
START H = G3 Tiverton	E = MH C.M. Mt. Hope Junction gong	N = R10 C.M. Lt. Bell Bouy
	F = C3 C.M.	O = C9 C.M.
	G = R4 FL. R 4s Bell Common Fence Pt.	P = G11 C.M. FL G 4s
	H = G3 FL. G 4s Gong Tiverton Shore	Q = N2 NEP F/R 4s
	I = N4 Tiverton Shore	X = C17 Sak. River
		Z = Bridge Stanchion (gate - rounding outside to inside)
C/B = Comm. Boat		
C.M. = Channel Marker		

# Course #1 [Ideal 350°, range 335°-15°], 7.03nm

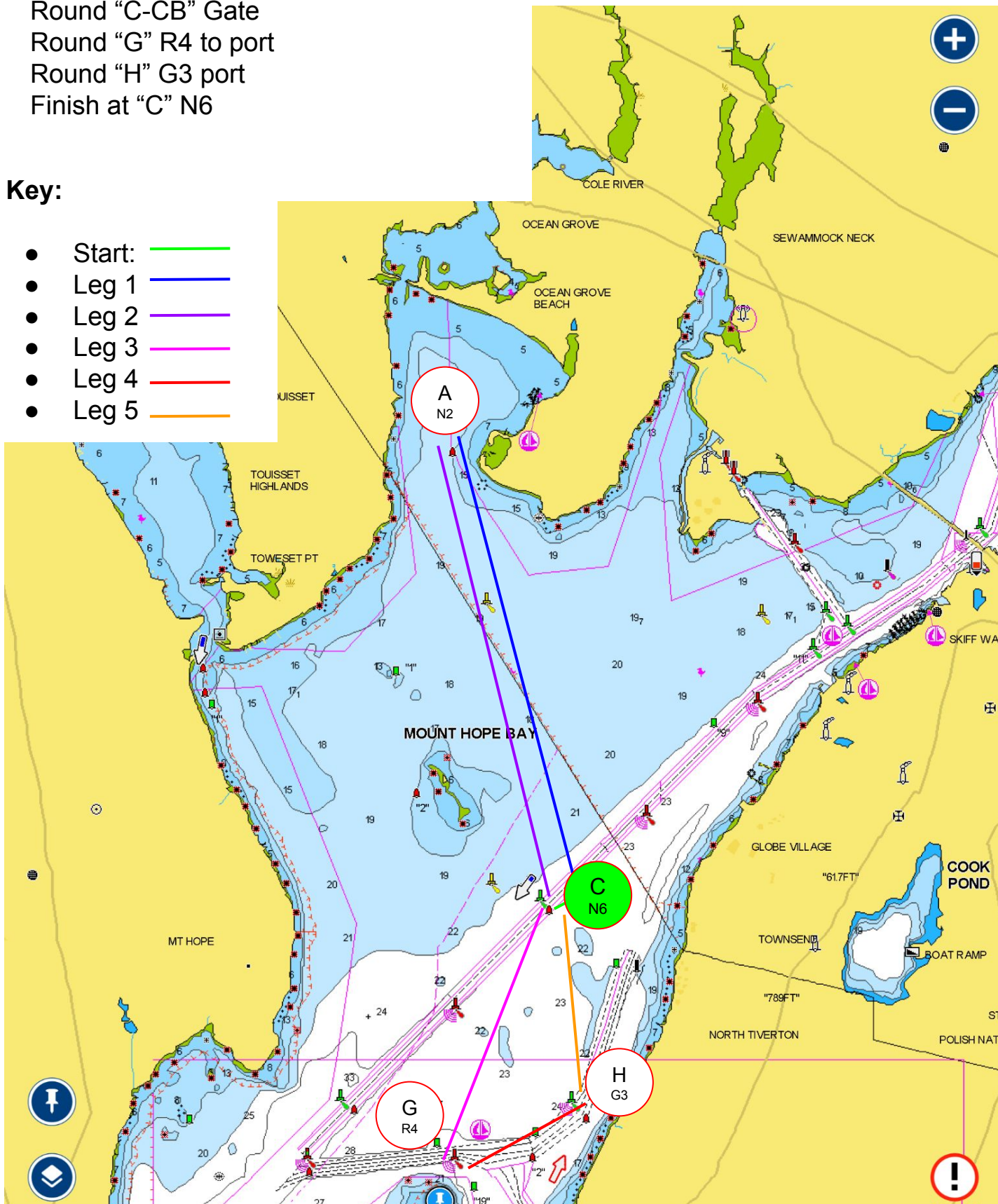
## Course details:

- Start at "C" N6
- Round "A" N2 to port
- Round "C-CB" Gate
- Round "G" R4 to port
- Round "H" G3 port
- Finish at "C" N6

Preferred Short Course - After 2 legs, finish between "C" and Committee Boat - 4.28nm

## Key:

- Start: 
- Leg 1: 
- Leg 2: 
- Leg 3: 
- Leg 4: 
- Leg 5: 



# Course #2 [Ideal 20°, range 5° - 35°], 6.53nm

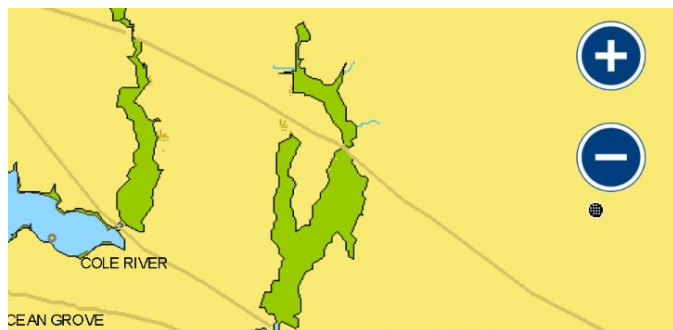
Preferred Short Course - After 2 legs, finish between "K" and Committee Boat - 4.13nm

## Course details:

- Start at "K" C5 (strong preference to set the CB at the port end of the line to stay out of the channel)
- Round "Q" N2 to port
- Round "K" C5 port
- Round "O" C9 to port
- Finish at "K" C5

## Key:

- Start: 
- Leg 1: 
- Leg 2: 
- Leg 3: 
- Leg 4: 



# Course #3 [Ideal 45°, range 25°- 65°], 6.2nm

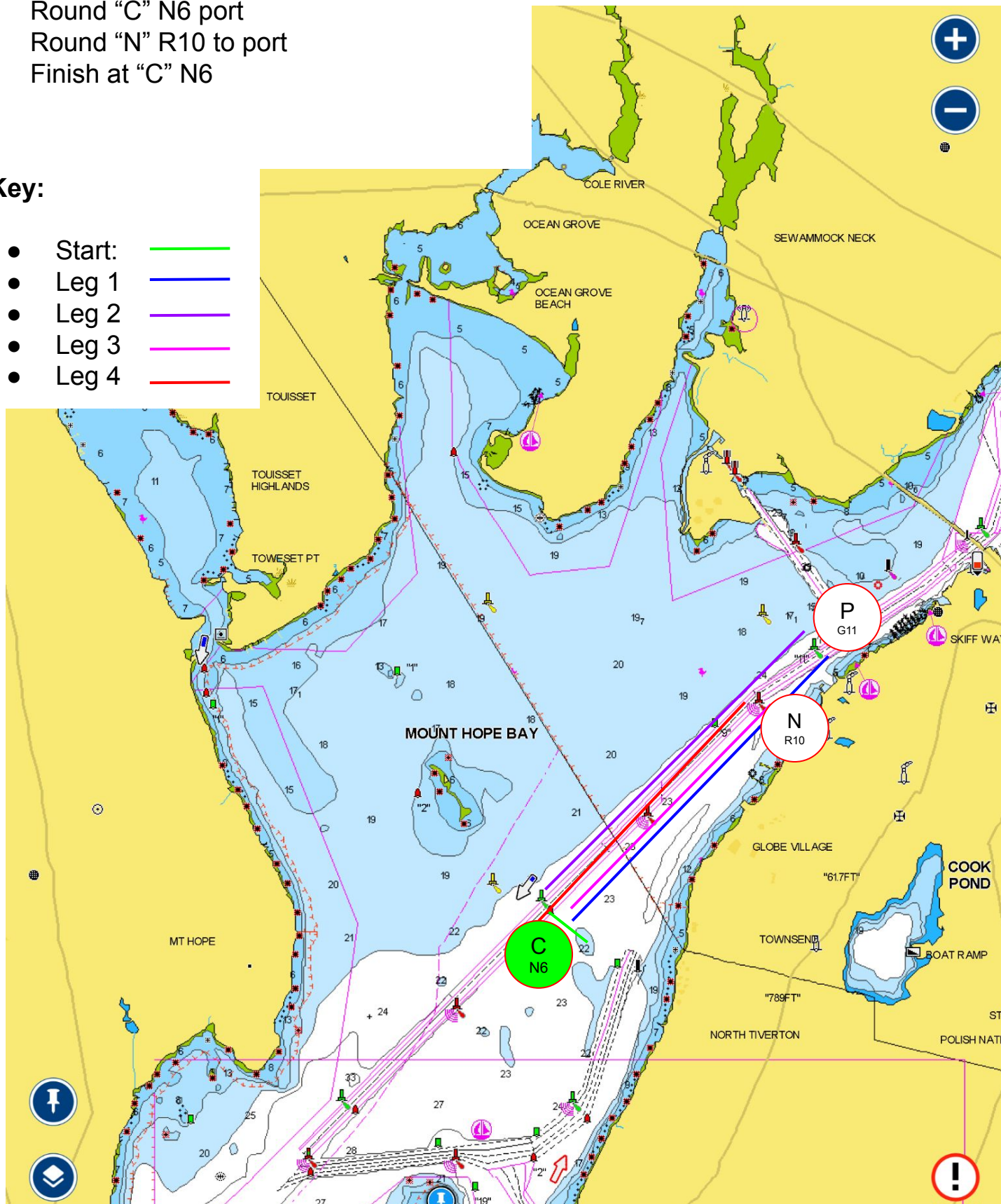
## Course details:

- Start at "C" N6
- Round "P" G11 to port
- Round "C" N6 port
- Round "N" R10 to port
- Finish at "C" N6

Preferred Short Course - After 2 legs, finish between "C" and Committee Boat - 3.46nm

## Key:

- Start: 
- Leg 1: 
- Leg 2: 
- Leg 3: 
- Leg 4: 



# Course #4 [Ideal 75°, range 55°- 100°], 4.97nm

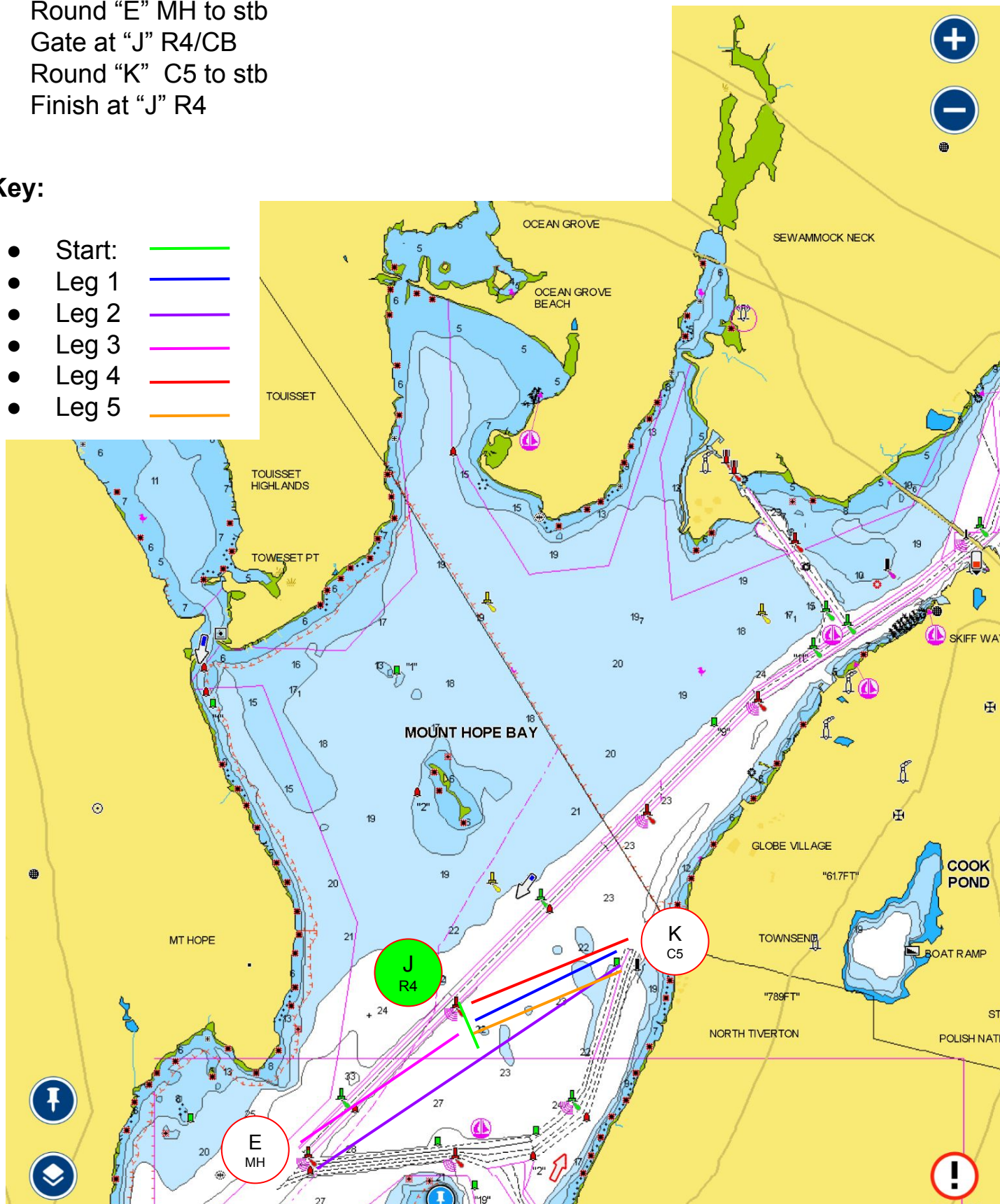
## Course details:

- Start at "J" R4
- Round "K" C5 to stb
- Round "E" MH to stb
- Gate at "J" R4/CB
- Round "K" C5 to stb
- Finish at "J" R4

Preferred Short Course - Finish at Gate  
between "J" and Committee Boat - 3.43nm

## Key:

- Start: 
- Leg 1: 
- Leg 2: 
- Leg 3: 
- Leg 4: 
- Leg 5: 



# Course #5 [Ideal 135°, range 110°-160°], 5.99nm

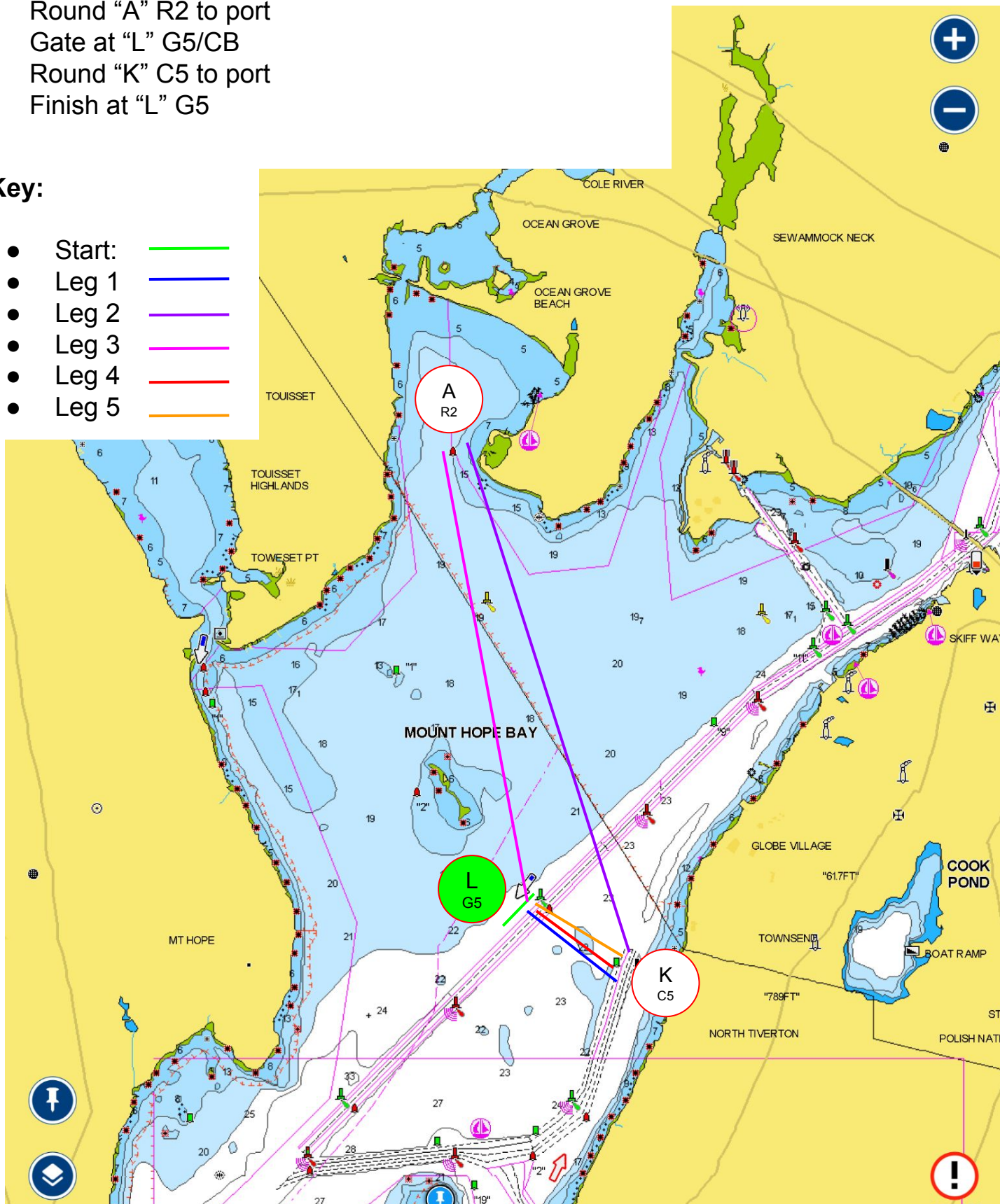
## Course details:

- Start at "L" G5
- Round "K" C5 to port
- Round "A" R2 to port
- Gate at "L" G5/CB
- Round "K" C5 to port
- Finish at "L" G5

Preferred Short Course - Finish at Gate  
between "L" G5 and Committee Boat - 5.06nm

## Key:

- Start: 
- Leg 1: 
- Leg 2: 
- Leg 3: 
- Leg 4: 
- Leg 5: 



# Course #6 [Ideal 180°, range 160°-200°], 6.39nm

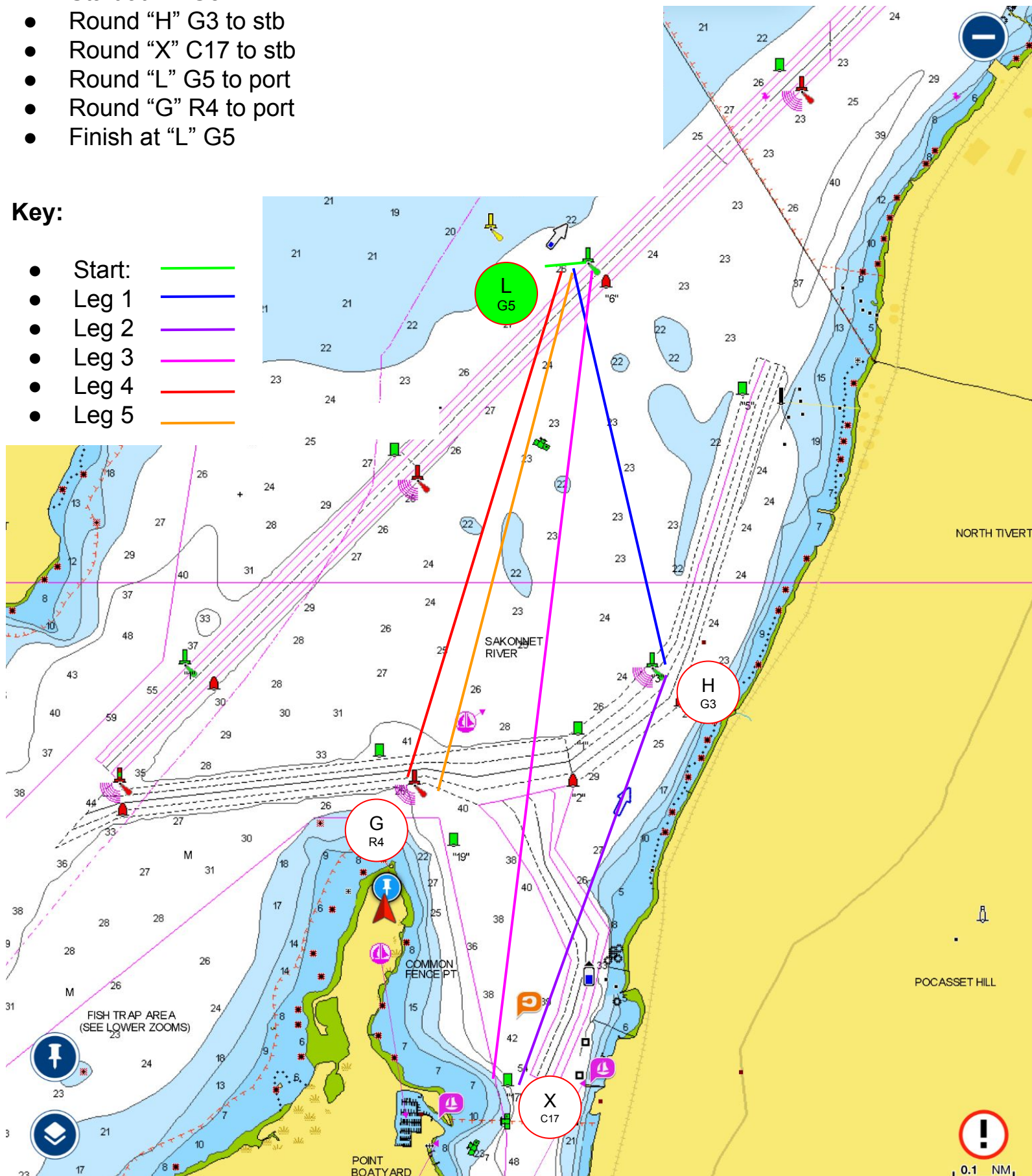
## Course details:

- Start at "L" G5
- Round "H" G3 to stb
- Round "X" C17 to stb
- Round "L" G5 to port
- Round "G" R4 to port
- Finish at "L" G5

Preferred Short Course - After 3 legs, finish between "L" and Committee Boat - 3.86nm

## Key:

- Start: 
- Leg 1: 
- Leg 2: 
- Leg 3: 
- Leg 4: 
- Leg 5: 



# Course #7 [Ideal 185°, range 165° - 205°], 6.74nm

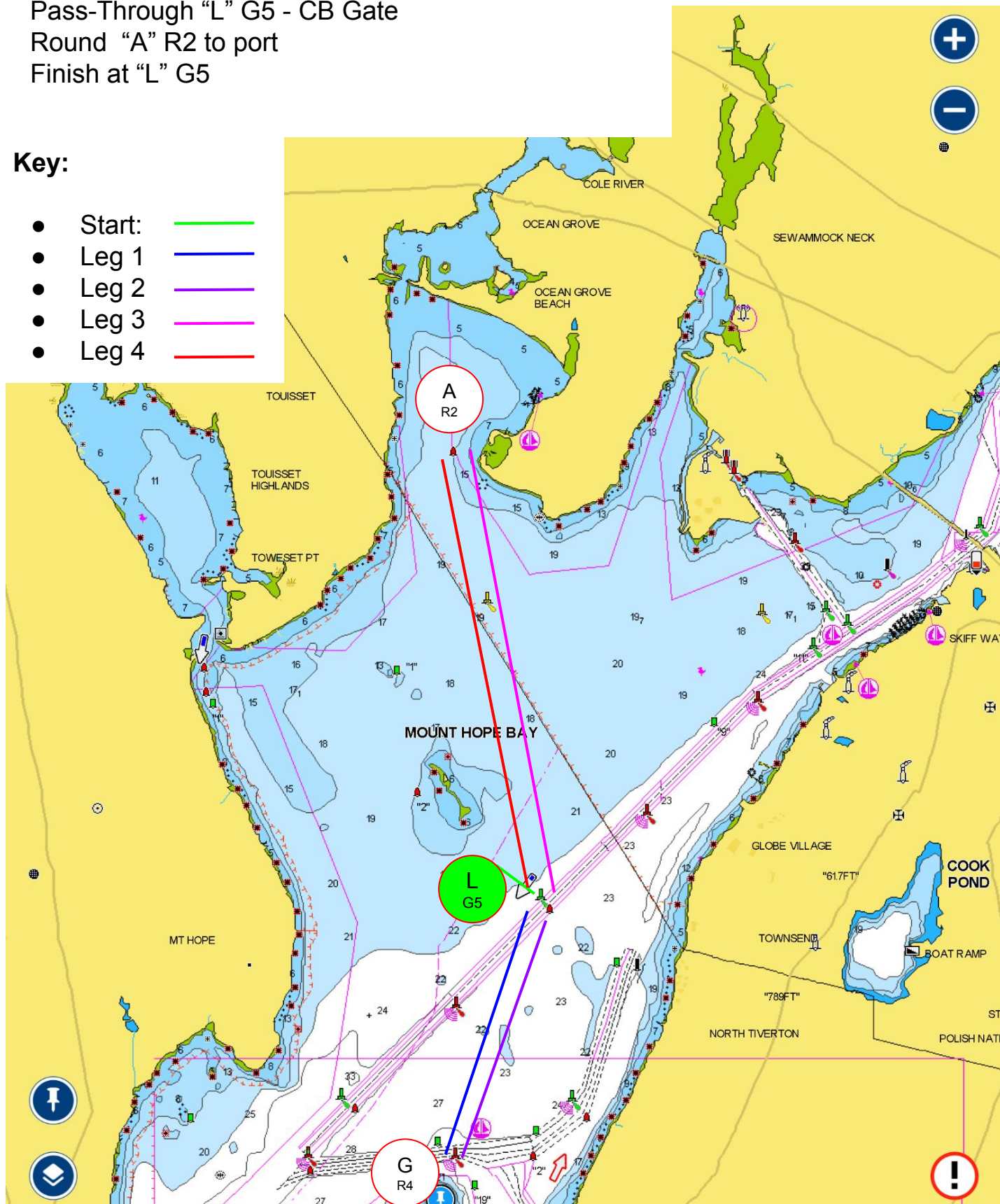
## Course details:

- Start at "L" G5
- Round "G" R4 to port
- Pass-Through "L" G5 - CB Gate
- Round "A" R2 to port
- Finish at "L" G5

Preferred Short Course - After 2 legs, finish between "L" and Committee Boat - 2.53nm

## Key:

- Start: 
- Leg 1: 
- Leg 2: 
- Leg 3: 
- Leg 4: 



# Course #8 [Ideal 190°, range 170° - 210°], 6.34nm

## Course details:

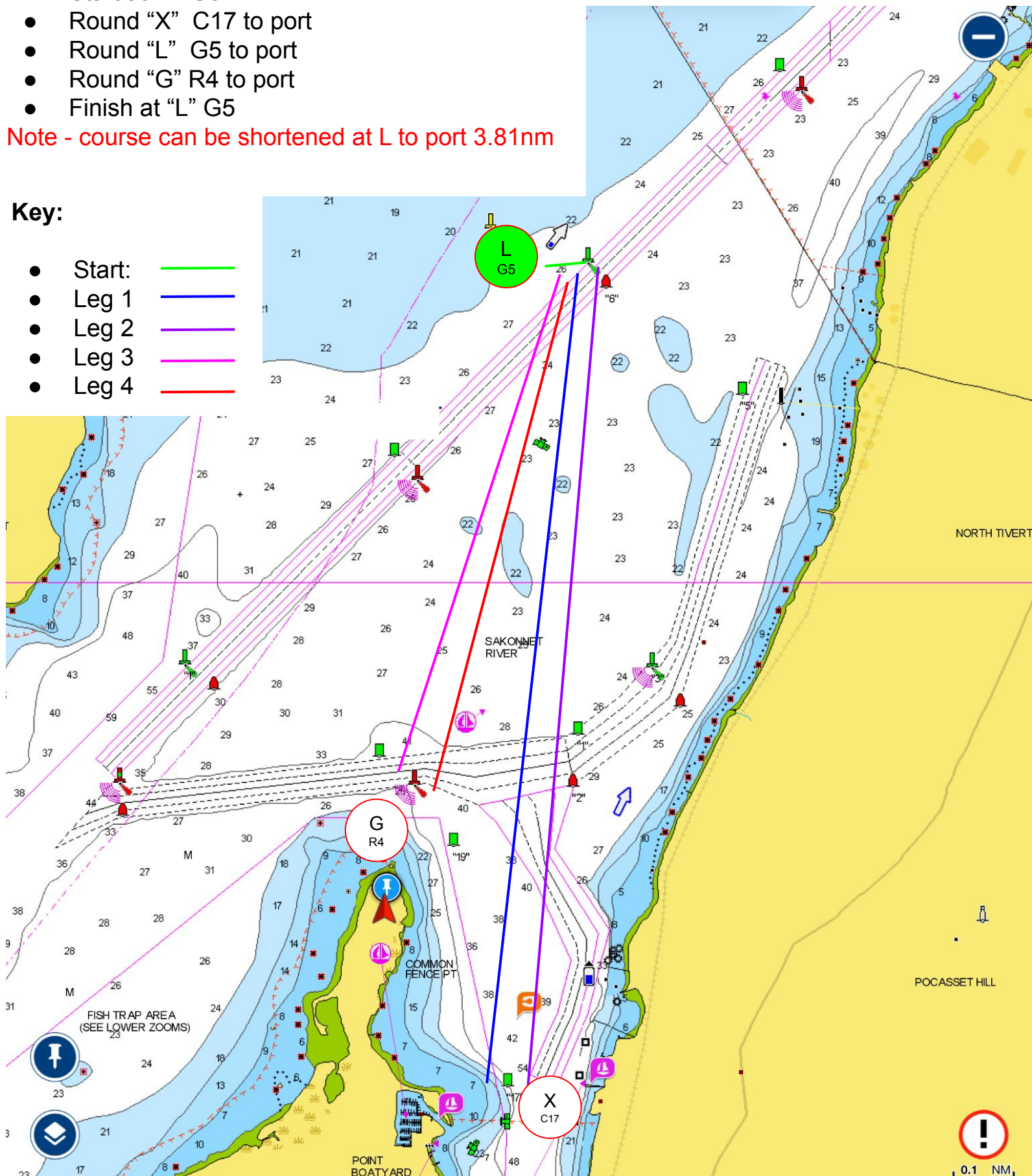
- Start at "L" G5
- Round "X" C17 to port
- Round "L" G5 to port
- Round "G" R4 to port
- Finish at "L" G5

Preferred Short Course - After 2 legs, finish between "L" and Committee Boat - 3.81nm

Note - course can be shortened at L to port 3.81nm

## Key:

- Start: 
- Leg 1: 
- Leg 2: 
- Leg 3: 
- Leg 4: 



# Course #9 [Ideal 205°, range 185° - 225°], 6.25nm

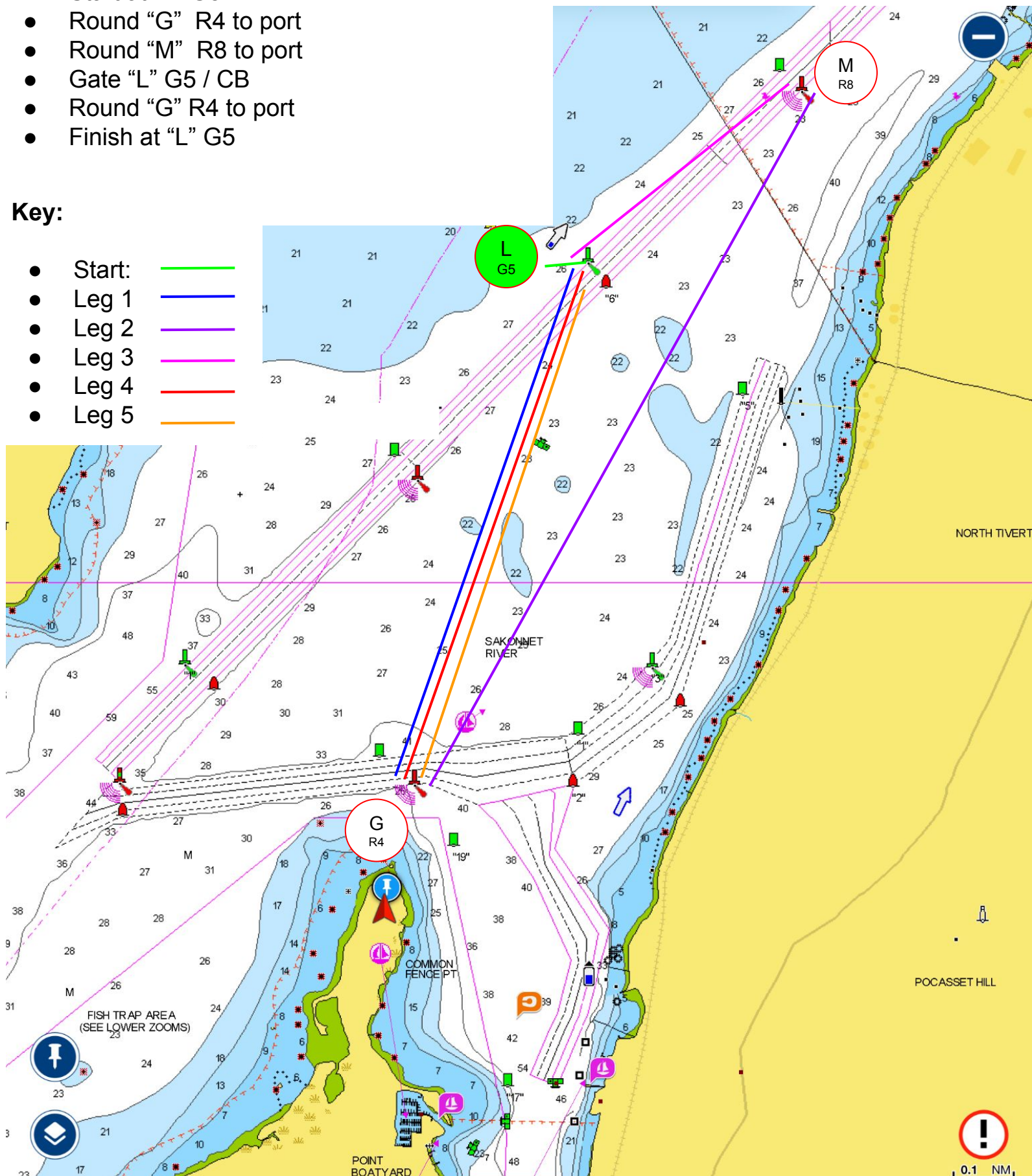
## Course details:

- Start at "L" G5
- Round "G" R4 to port
- Round "M" R8 to port
- Gate "L" G5 / CB
- Round "G" R4 to port
- Finish at "L" G5

Preferred Short Course - Finish at Gate between "L" and Committee Boat - 3.72nm

## Key:

- Start: 
- Leg 1: 
- Leg 2: 
- Leg 3: 
- Leg 4: 
- Leg 5: 



# Course #10 [Ideal 220°, range 200° - 230°], 6.42nm

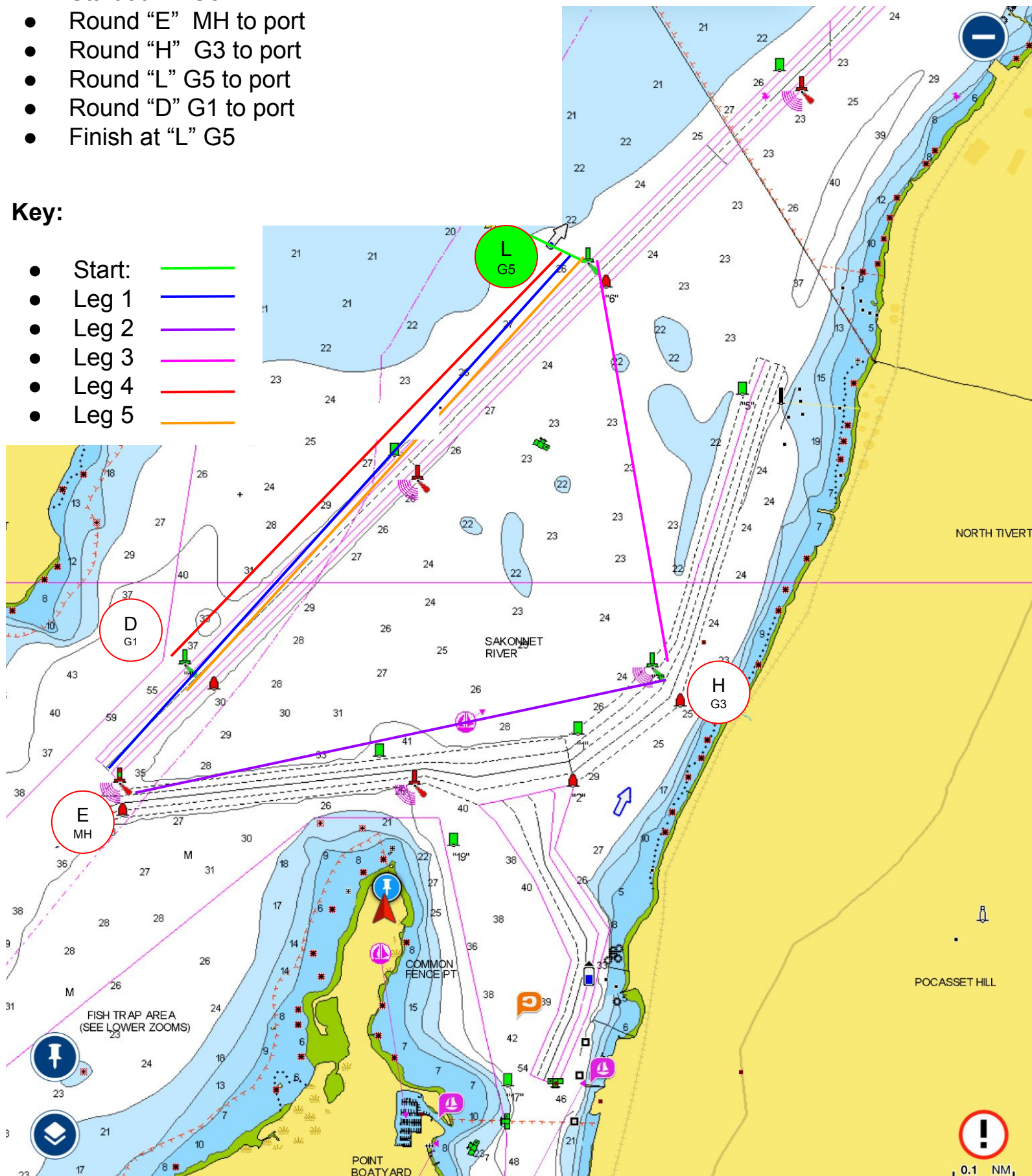
## Course details:

- Start at "L" G5
- Round "E" MH to port
- Round "H" G3 to port
- Round "L" G5 to port
- Round "D" G1 to port
- Finish at "L" G5

Preferred Short Course - After 3 legs, finish between "L" and Committee Boat - 3.8nm

## Key:

- Start: 
- Leg 1: 
- Leg 2: 
- Leg 3: 
- Leg 4: 
- Leg 5: 






# Course #11 [Ideal 225°, range 210° - 250°], 6.4 nm

## Course details:

- Start at "L" G5
- Round one of the main stanchions of the Mount Hope Bridge from outside to inside. (e.g. the north stanchion to port, or the south stanchion to starboard)
- Proceed to finish between "L" and RC

No short course

## Key:

- Start: 
- Leg 1: 
- Leg 2: 



# Course #12 [Ideal 257°, range 235° - 275°], 5.81nm

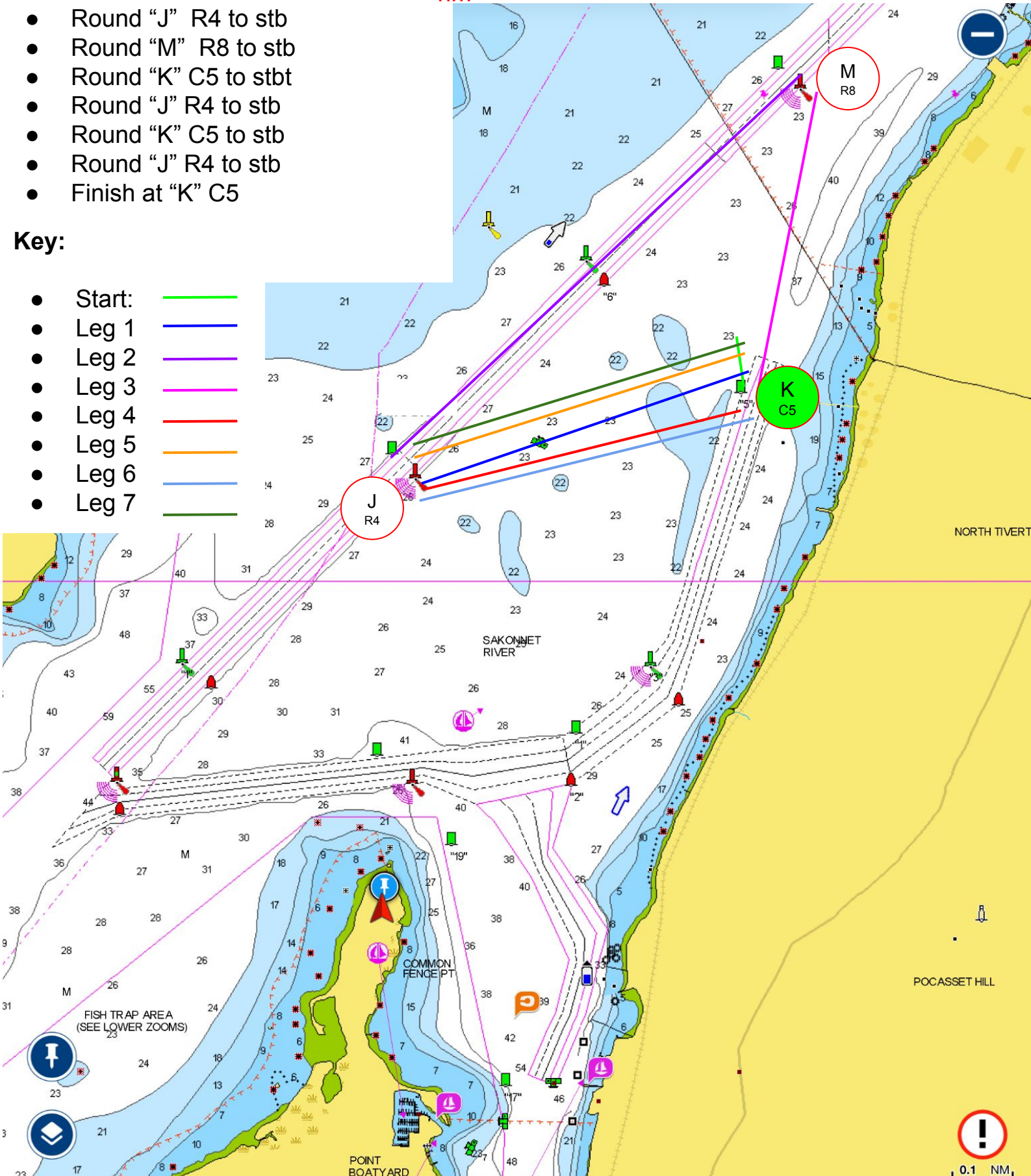
## Course details:

- Start at "K" C5
- Round "J" R4 to stb
- Round "M" R8 to stb
- Round "K" C5 to stbt
- Round "J" R4 to stb
- Round "K" C5 to stb
- Round "J" R4 to stb
- Finish at "K" C5

Preferred Short Course - After 3 legs, finish between "K" and Committee Boat - 2.73nm or after 5 between "K" and Committee Boat - 4.27 nm

## Key:

- Start: 
- Leg 1: 
- Leg 2: 
- Leg 3: 
- Leg 4: 
- Leg 5: 
- Leg 6: 
- Leg 7: 



# Course #13 [Ideal 270°, range 255° - 300°], 6.72nm

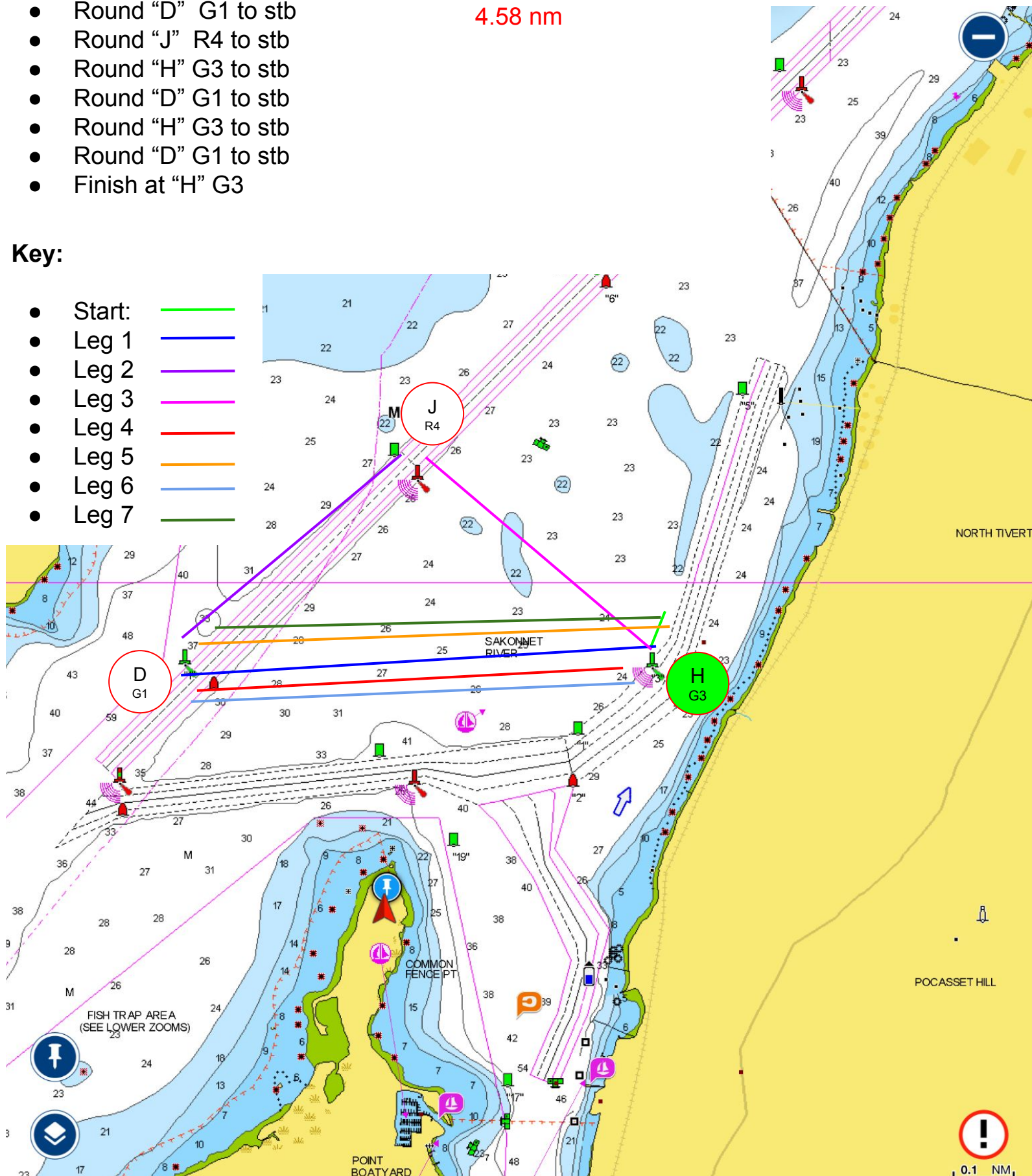
## Course details:

- Start at "H" G3
- Round "D" G1 to stb
- Round "J" R4 to stb
- Round "H" G3 to stb
- Round "D" G1 to stb
- Round "H" G3 to stb
- Round "D" G1 to stb
- Finish at "H" G3

Preferred Short Course - After 3 legs, finish between "H" and Committee Boat - 2.44nm or after 5 between "H" and Committee Boat - 4.58 nm

## Key:

- Start: 
- Leg 1: 
- Leg 2: 
- Leg 3: 
- Leg 4: 
- Leg 5: 
- Leg 6: 
- Leg 7: 



# Course #14 [Ideal 320°, range 300°- 340°], 5.85nm

## Course details:

- Start at "K" C5
- Round "C" R6 to stb
- Round "M" R8 to port
- Round "A" R2 to port
- Round "M" R8 to stb
- Round "C" R6 to port
- Finish at "K" C5

No Short Course, without moving the CB

Note - no short course

## Key:

- Start: 
- Leg 1: 
- Leg 2: 
- Leg 3: 
- Leg 4: 
- Leg 5: 
- Leg 6: 

