

SIRA / TYC

2026 Course Packet Non-Spin (Version 1.12.26)

Changes:

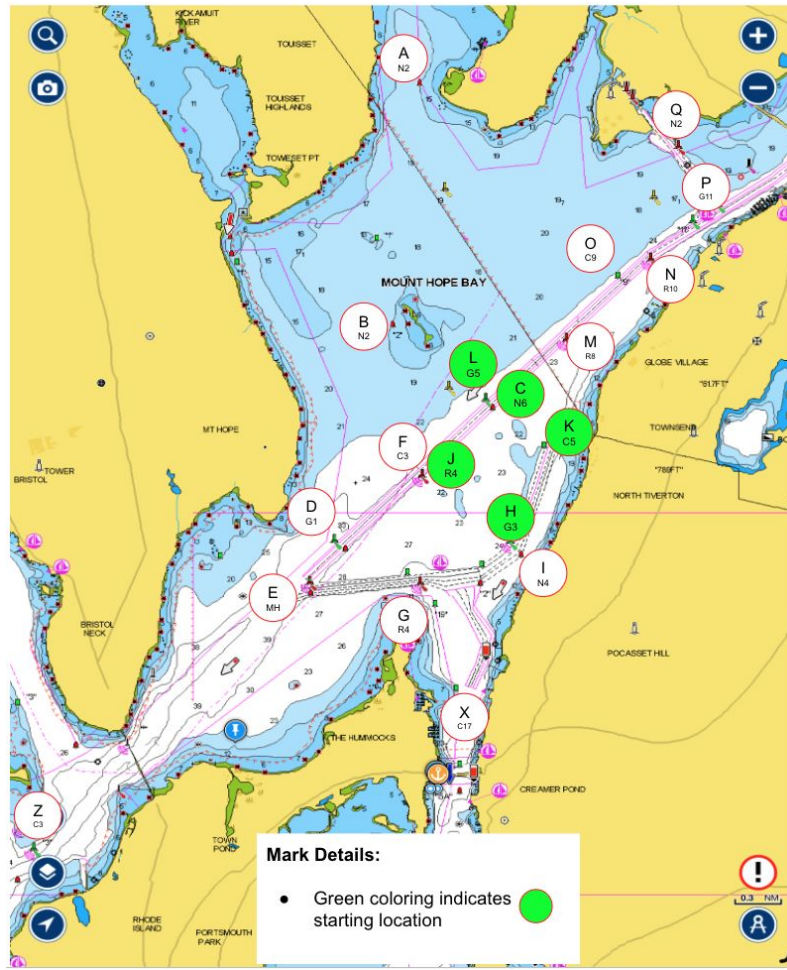
1. Course 4 - all roundings are now to starboard
2. Course 11 - is a new configuration

3 Class - Staggered Starting Sequence

GPS Time	SIGNAL	SOUND	COMMENT	FLAGS
6:14	Come Around Signal	Multiple Short Blasts	1 minute before first warning	No Flag
6:15	WARNING	1 Blast	Display Pennant #1	 1
6:16	PREPARATORY C	1 Blast	Display Prep #1 remains	 1 
6:19	1 MINUTE to C start	1 Blast	Remove Prep #1 remains	 1
6:20	START C	1 Blast	Remove #1 Display Pennant #2	 2
6:21	PREPARATORY B	1 Blast	Display prep #2 remains	 2 
6:24	1 MINUTE to B start	1 Blast	Remove prep #2 remains	 2
6:25	START B	1 Blast	Remove #2 Display Pennant #3	 3
6:26	PREPARATORY A	1 Blast	Display prep #3 remains	 3 
6:29	1 MINUTE to A start	1 Blast	Remove prep #3 remains	 3
6:30	START A	1 Blast	Remove #3 Display Pennant #4	 4

Non-Spin Classes

Marks and Courses



Course	Distance	Start	1st		2nd		3rd		4th		5th		6th		7th		Wind (M)	
			NM	Mark	NM	Mark	NM	Mark	NM	Mark	NM	Mark	NM	Mark	NM	Mark		
1	A	7.03	C	A-p	2.17	L-s	4.28	G-p	5.54	H-p	6.14	C(Fin)	7.03				N (350°)	
	B	5.13	C	A-p	2.17	Gate(C-CB)	4.34	K-p	4.73	C(Fin)	5.13						335-15	
2	A	6.53	K	Q-p	2.07	K-p	4.13	O-p	5.33	K(Fin)	6.53						NE(20°)	
	B	4.80	K	O-p	1.20	K-p	2.40	O-p	3.60	K(Fin)	4.80						5-35	
3	A	6.20	C	P-p	1.73	C-p	3.46	N-p	4.83	C(Fin)	6.20						ENE(45°)	
	B	5.47	C	N-p	1.37	C-p	2.74	N-p	4.11	C(Fin)	5.47						25-65	
4	A	4.97	J	K-s	0.77	E-s	2.45	Gate(J-CB)	3.43	K-p	4.20	J(Fin)	4.97				ENE(75°)	
	B	4.97	J	K-s	0.77	E-s	2.45	Gate(J-CB)	3.43	K-p	4.20	J(Fin)	4.97				50-100	
5	A	5.99	L	K-p	0.47	A-p	2.95	Gate(J-CB)	5.06	K-p	5.52	L(Fin)	5.99				SE(135°)	
	B	6.4	L	K-p	0.47	N-p	1.80	L-p	3.20	K-p	3.60	N-p	5.00	L(Fin)	6.40		110-160	
6	A	6.39	L	H-s	0.94	X-s	1.96	L-p	3.86	G-p	5.13	L(Fin)	6.39				S (180°)	
	B	4.83	L	I-p	1.00	M-p	2.50	L-p	3.10	I-p	4.10	L(Fin)	5.10				160-200	
7	A	6.74	L	G-p	1.26	L-p	2.53	A-p	4.63	L(Fin)	6.74						SSW (185°)	
	B	4.80	L	G-p	1.26	Gate (L-CB)	2.53	O-p	3.67	L(Fin)	4.80						165-205	
8	A	6.34	L	X-p	1.90	L-p	3.81	G-p	5.07	L(Fin)	6.34						SSW (190°)	
	B	5.35	L	G-p	1.27	H-p	1.87	L-p	2.82	G-p	4.08	L(Fin)	5.35				170-210	
9	A	6.25	L	G-p	1.26	M-p	3.09	Gate(L-CB)	3.72	G-p	4.98	L(Fin)	6.25				SSW (205°)	
	B	6.25	L	G-p	1.26	M-p	3.09	Gate (L-C)	3.72	G-p	4.98	L(Fin)	6.25				185-225	
10	A	6.42	L	E-p	1.61	H-p	2.86	L-p	3.80	D-p	5.11	L(Fin)	6.42				WSW (220°)	
	B	5.23	L	D-p	1.31	L-p	2.62	D-p	3.92	L(Fin)	5.23						200-230	
11	A	6.40	L	Z-p	3.20	L(Fin)	6.40										WSW (225°)	
	B	6.44	L	E-p	1.61	L-p	3.22	E-p	4.83	L(Fin)	6.44						210-250	
12	A	5.81	K	J-s	0.77	M-s	2.02	K-s	2.73	J-s	3.50	K-s	4.27	J-s	5.04	K(Fin)	5.81	WSW (250°)
	B	4.27	K	J-s	0.77	M-s	2.02	K-s	2.73	J-s	3.50	K(Fin)	4.27					235-275
13	A	6.72	H	D-s	1.07	J-s	1.75	H-s	2.44	D-s	3.51	H-s	4.58	D-s	5.65	H(Fin)	6.72	W (270°)
	B	4.58	H	D-s	1.07	J-s	1.75	H-s	2.44	D-s	3.51	H(Fin)	4.58					255-300
14	A	5.85	K	C-s	0.40	M-p	1.03	A-p	2.93	M-s	4.82	C-p	5.45	K(Fin)	5.85		NNW (320°)	
	B	4.19	K	L-p	0.46	H-s	1.41	J-s	2.10	H-p	2.79	L-s	3.73	K(Fin)	4.19		300-340	

START L = G5 C.M.	A = N2 COLES RIVER	J = R4 C.M. Lt. Bell Bouy
START C = N6 C.M.	B = N2 SPAR ISLAND	K = C5 Tanks No. Tiverton
START K = C5 TIVERTON	C = N6 C.M.	L = G5 C.M. FL G 4s Lt Bouy
START J = R4 C.M.	D = G1 C.M.	M = R8 C.M. Lt. Bell Bouy
START H = G3 Tiverton	E = MH C.M. Mt. Hope Junction gong	N = R10 C.M. Lt. Bell Bouy
	F = C3 C.M.	O = C9 C.M.
	G = R4 FL. R 4s Bell Common Fence Pt.	P = G11 C.M. FL G 4s
	H = G3 FL. G 4s Gong Tiverton Shore	Q = N2 NEP F/R 4s
	I = N4 Tiverton Shore	X = C17 Sak. River
		Z = Bridge Stanchion (gate - rounding outside to inside)
C/B = Comm. Boat		
C.M. = Channel Marker		

Course #1B [Ideal 350°, range 335°-15°], 5.13nm

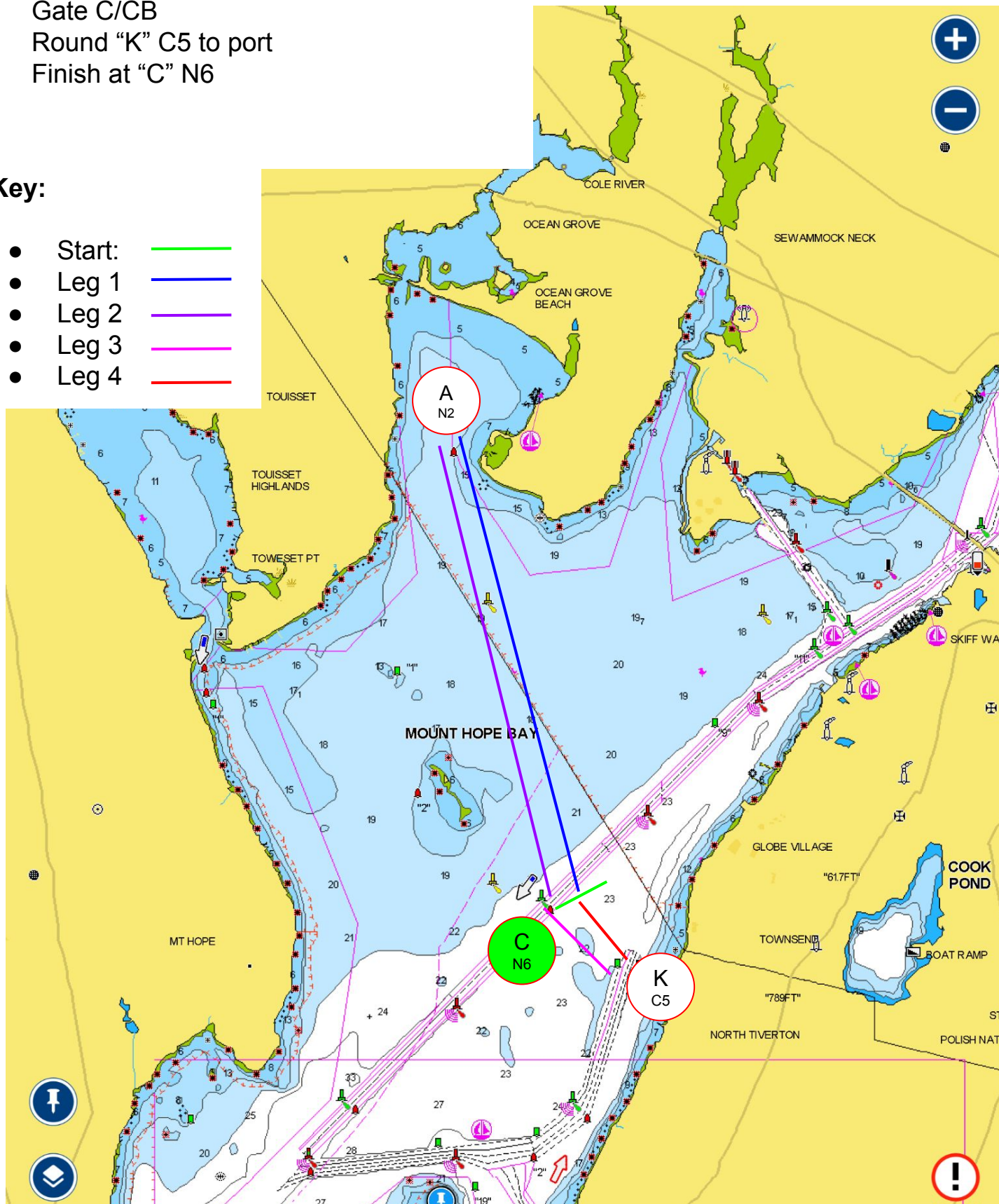
Course details:

- Start at "C" N6
- Round "A" N2 to port
- Gate C/CB
- Round "K" C5 to port
- Finish at "C" N6

Preferred Short Course - Finish at Gate between "C" and Committee Boat - 4.34nm

Key:

- Start: 
- Leg 1: 
- Leg 2: 
- Leg 3: 
- Leg 4: 



Course #2B [Ideal 20°, range 5° - 35°], 4.8nm

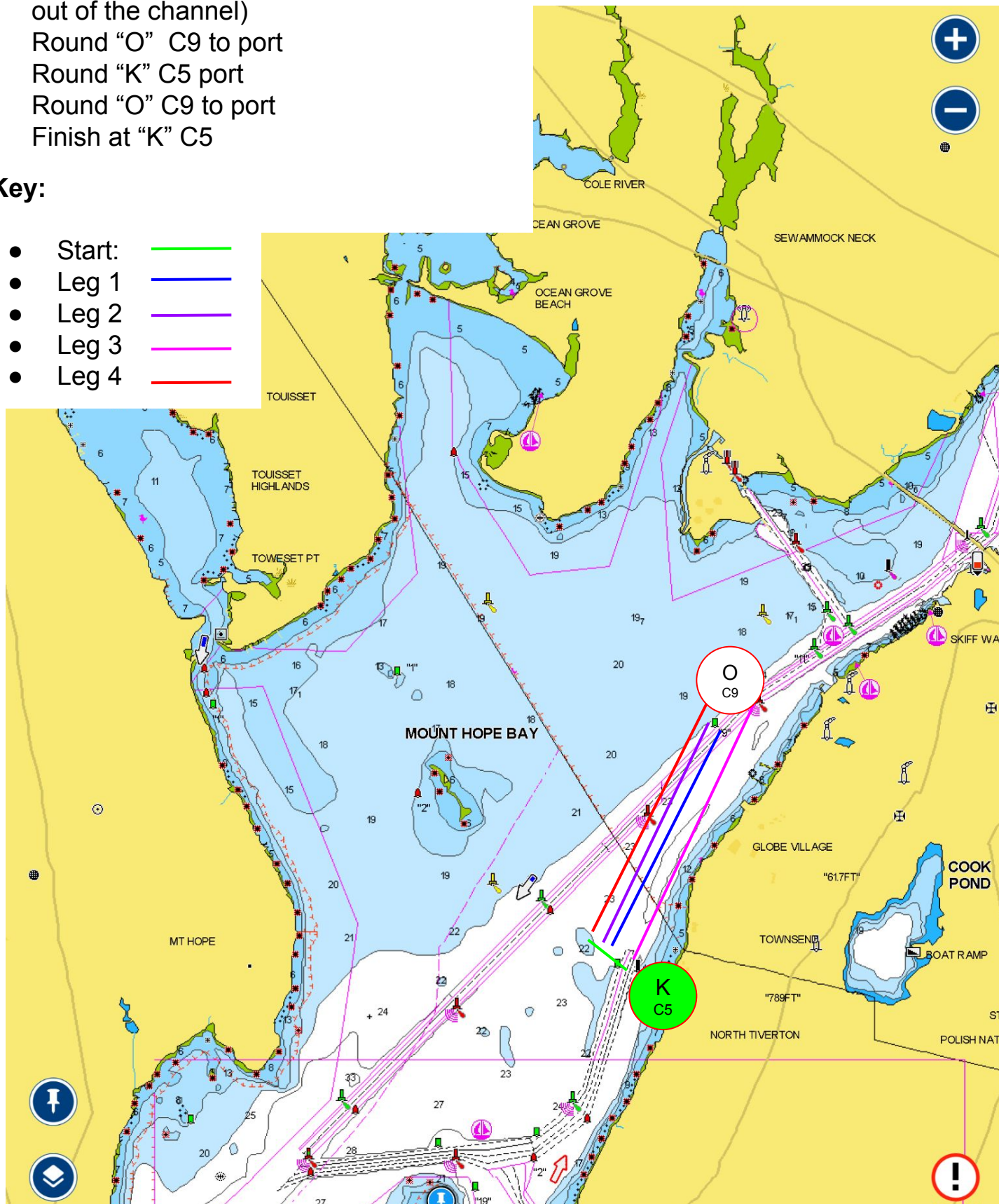
Course details:

- Start at "K" C5 (strong preference to set the CB at the port end of the line to stay out of the channel)
- Round "O" C9 to port
- Round "K" C5 port
- Round "O" C9 to port
- Finish at "K" C5

Preferred Short Course - After 2 legs, finish between "K" and Committee Boat - 2.4nm

Key:

- Start: 
- Leg 1: 
- Leg 2: 
- Leg 3: 
- Leg 4: 



Course #3B [Ideal 45°, range 25° - 65°], 5.47nm

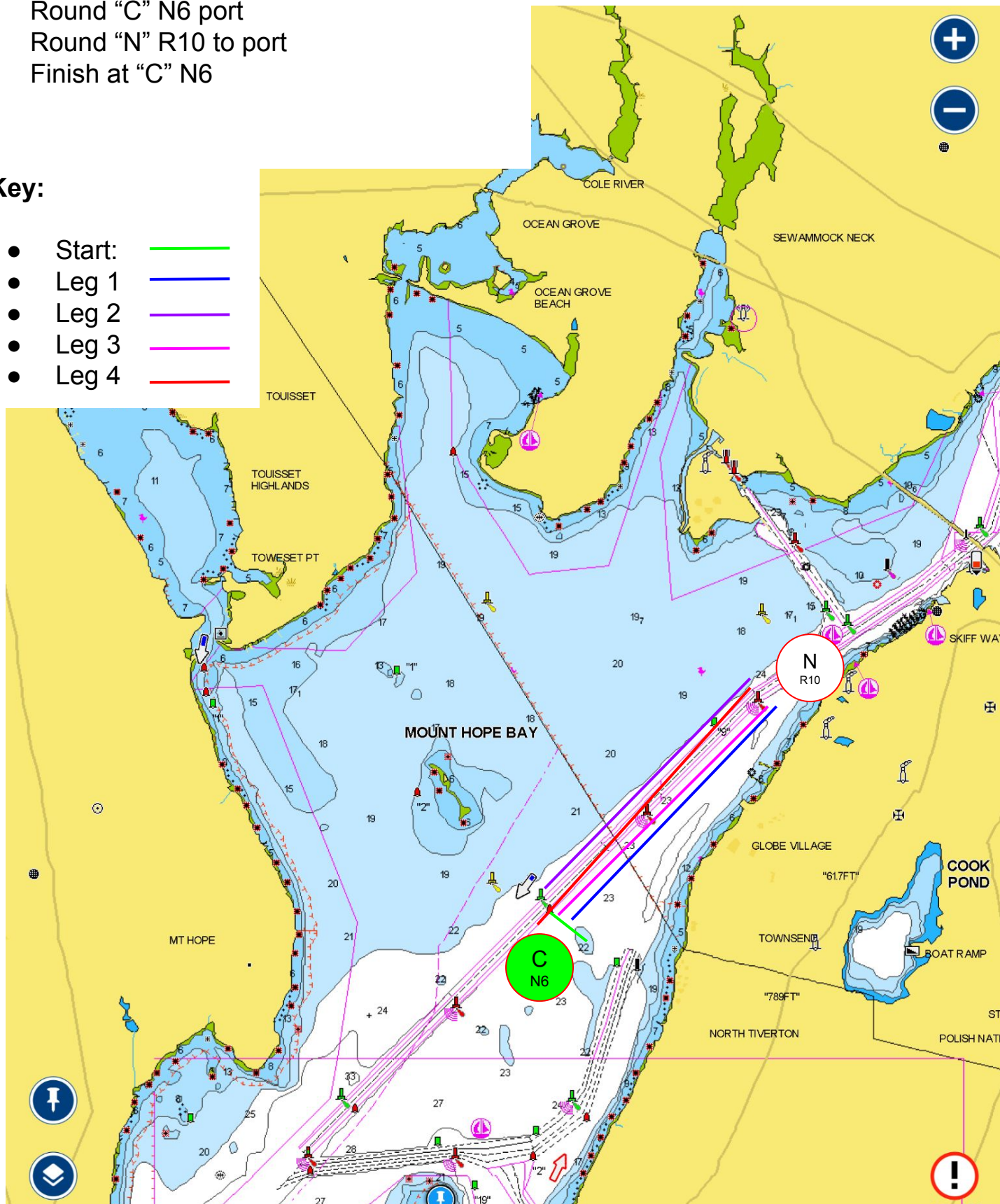
Course details:

- Start at "C" N6
- Round "N" R10 to port
- Round "C" N6 port
- Round "N" R10 to port
- Finish at "C" N6

Preferred Short Course - After 2 legs, finish between "C" and Committee Boat - 2.74nm

Key:

- Start: 
- Leg 1: 
- Leg 2: 
- Leg 3: 
- Leg 4: 



Course #4B [Ideal 75°, range 55°- 100°], 4.97nm

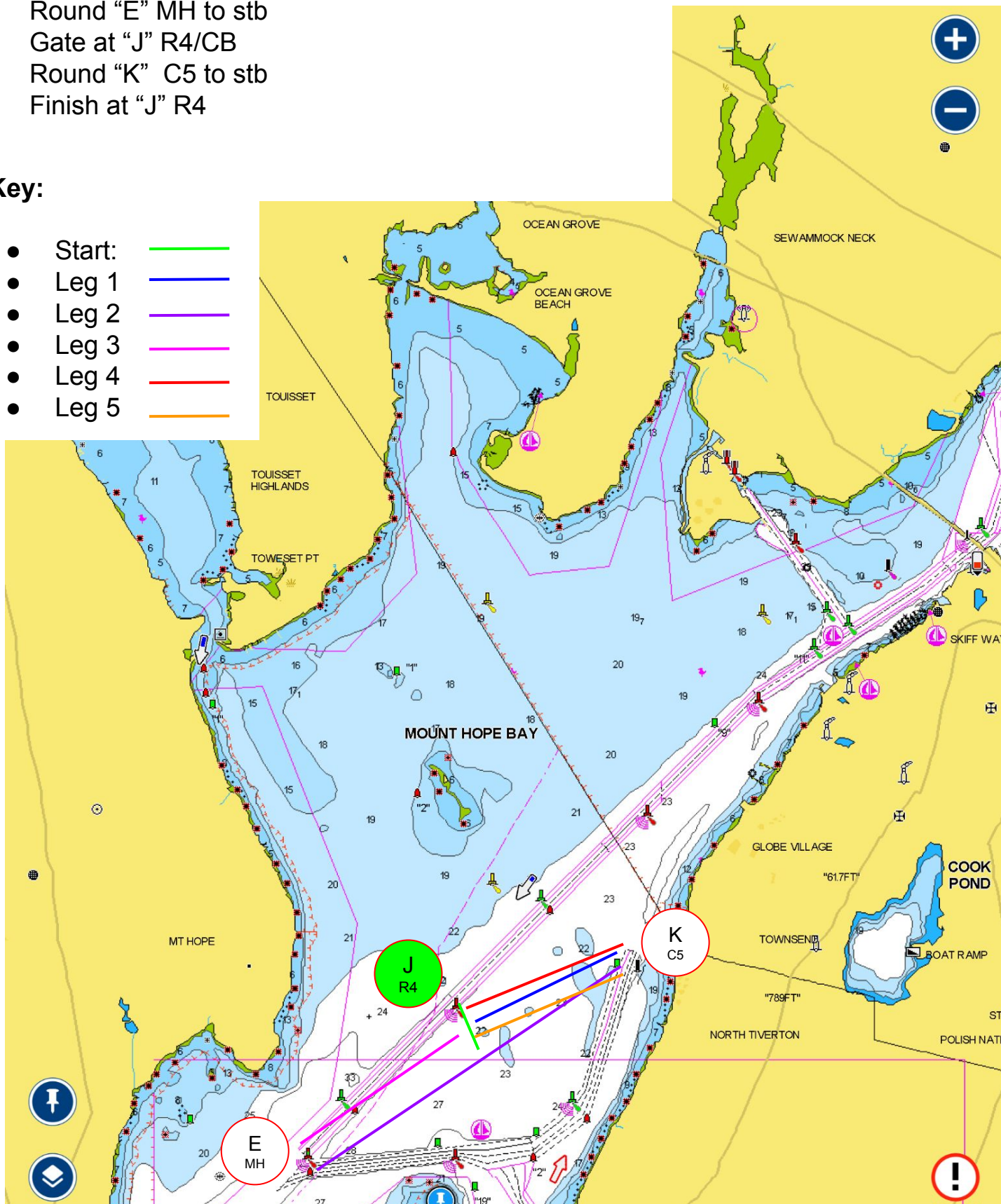
Course details:

- Start at "J" R4
- Round "K" C5 to stb
- Round "E" MH to stb
- Gate at "J" R4/CB
- Round "K" C5 to stb
- Finish at "J" R4

Preferred Short Course - Finish at Gate
between "J" and Committee Boat - 3.43nm

Key:

- Start: 
- Leg 1: 
- Leg 2: 
- Leg 3: 
- Leg 4: 
- Leg 5: 



Course #5B [Ideal 135°, range 110°- 160°], 6.4 nm

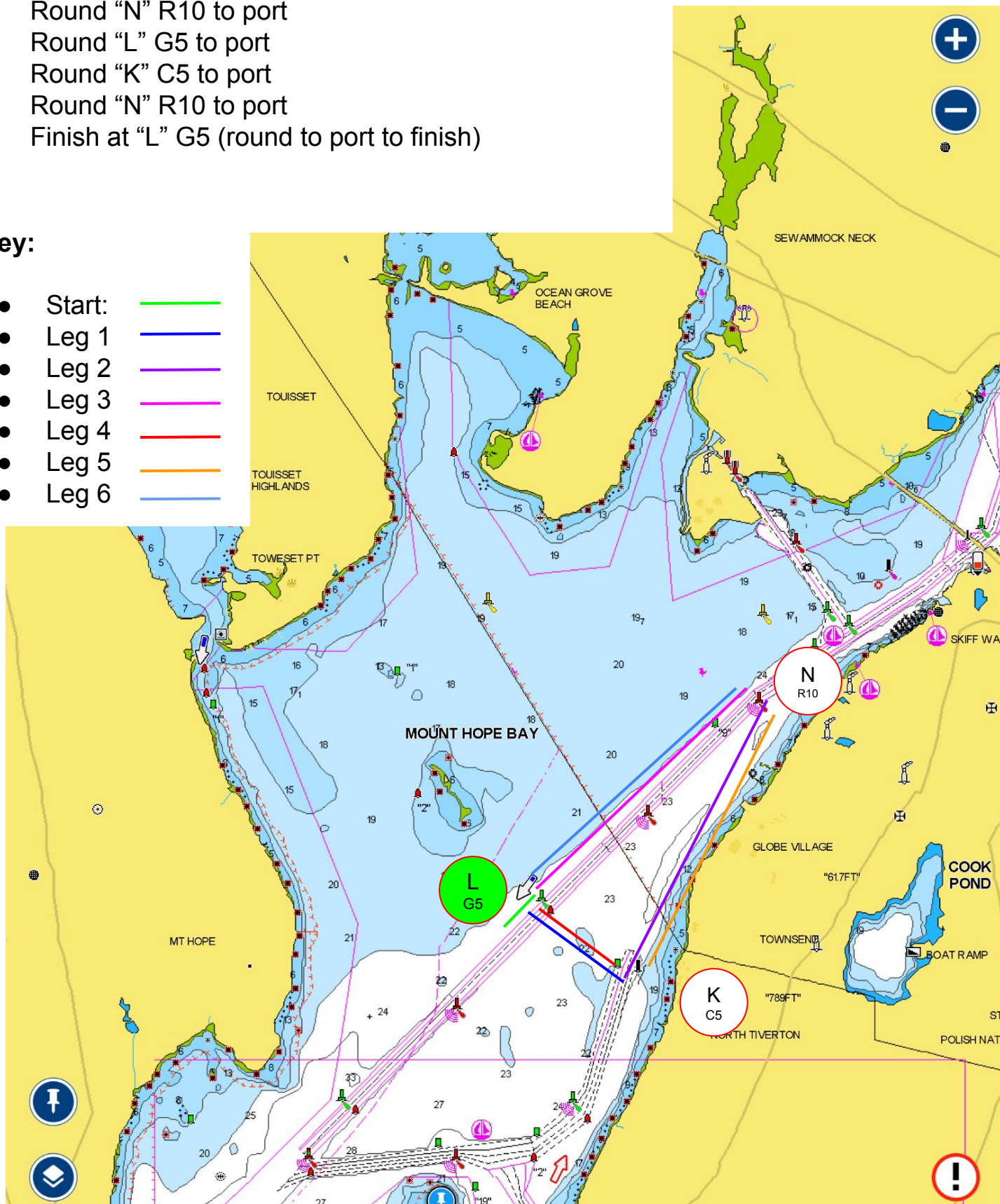
Course details:

- Start at "L" G5
- Round "K" C5 to port
- Round "N" R10 to port
- Round "L" G5 to port
- Round "K" C5 to port
- Round "N" R10 to port
- Finish at "L" G5 (round to port to finish)

Preferred Short Course - After 3 legs, finish between "L" and Committee Boat - 3.2nm

Key:

- Start: 
- Leg 1: 
- Leg 2: 
- Leg 3: 
- Leg 4: 
- Leg 5: 
- Leg 6: 



Course #6B [Ideal 180°, range 160° - 200°], 4.83nm

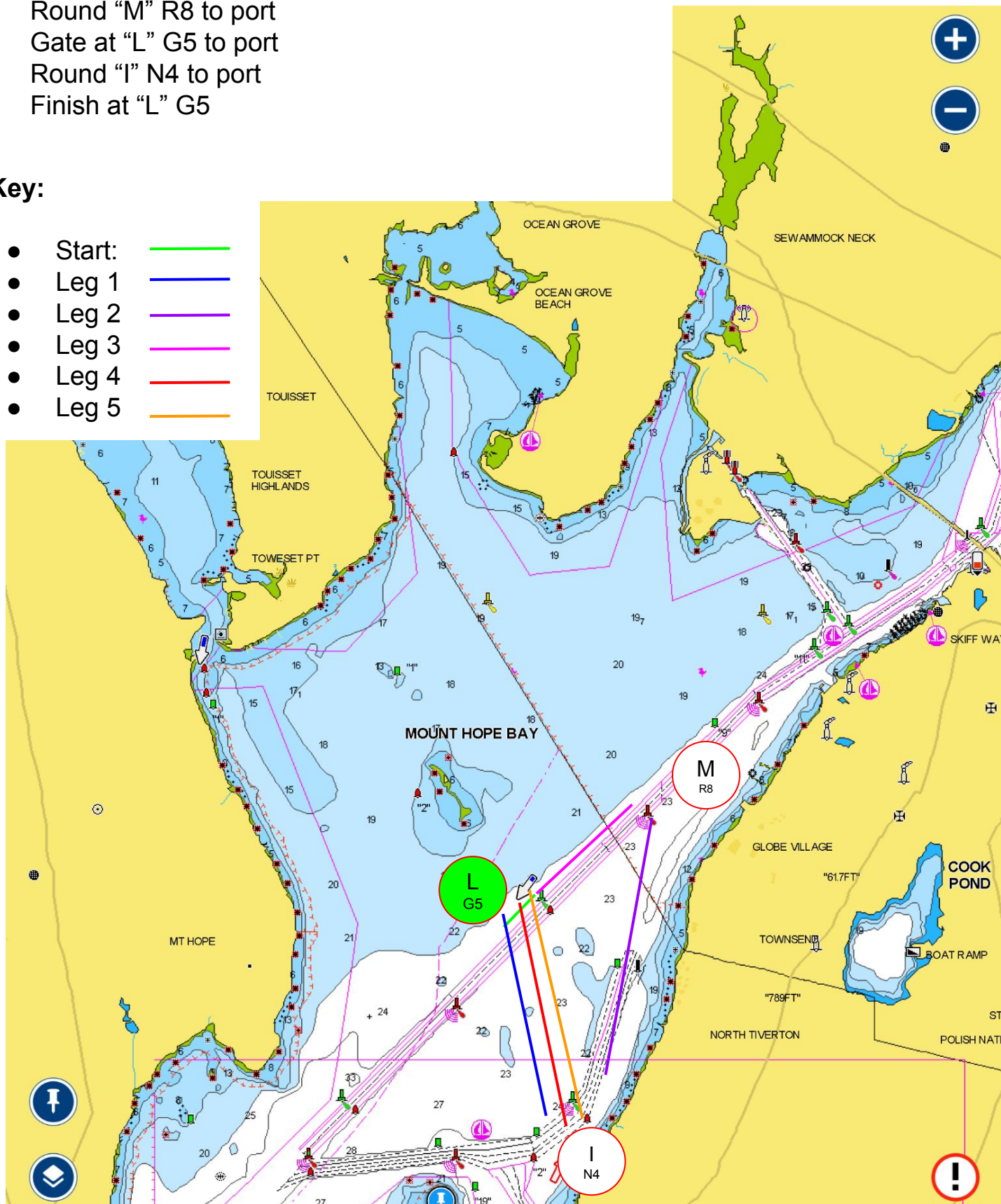
Course details:

- Start at "L" G5
- Round "I" N4 to port
- Round "M" R8 to port
- Gate at "L" G5 to port
- Round "I" N4 to port
- Finish at "L" G5

Preferred Short Course - Finish at Gate between "L" and Committee Boat - 2.94nm

Key:

- Start: 
- Leg 1: 
- Leg 2: 
- Leg 3: 
- Leg 4: 
- Leg 5: 



Course #7B [Ideal 185°, range 165° - 205°], 4.8nm

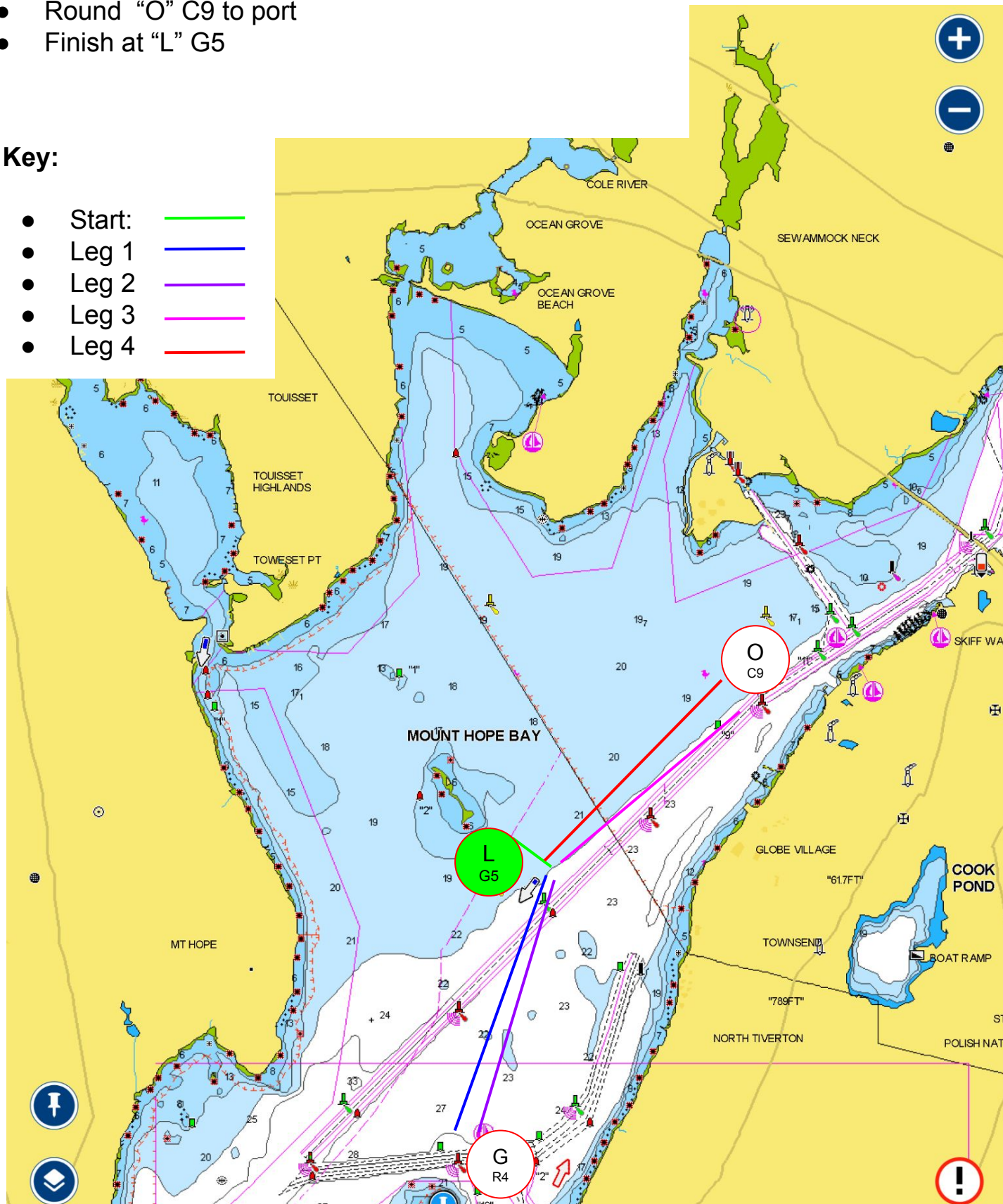
Course details:

- Start at "L" G5
- Round "G" R4 to port
- Pass-Through Gate "L" G5 /CB
- Round "O" C9 to port
- Finish at "L" G5

Preferred Short Course - Finish at Gate between "L" and Committee Boat - 2.53nm

Key:

- Start: 
- Leg 1: 
- Leg 2: 
- Leg 3: 
- Leg 4: 



Course #8B [Ideal 190°, range 170° - 210°], 5.35nm

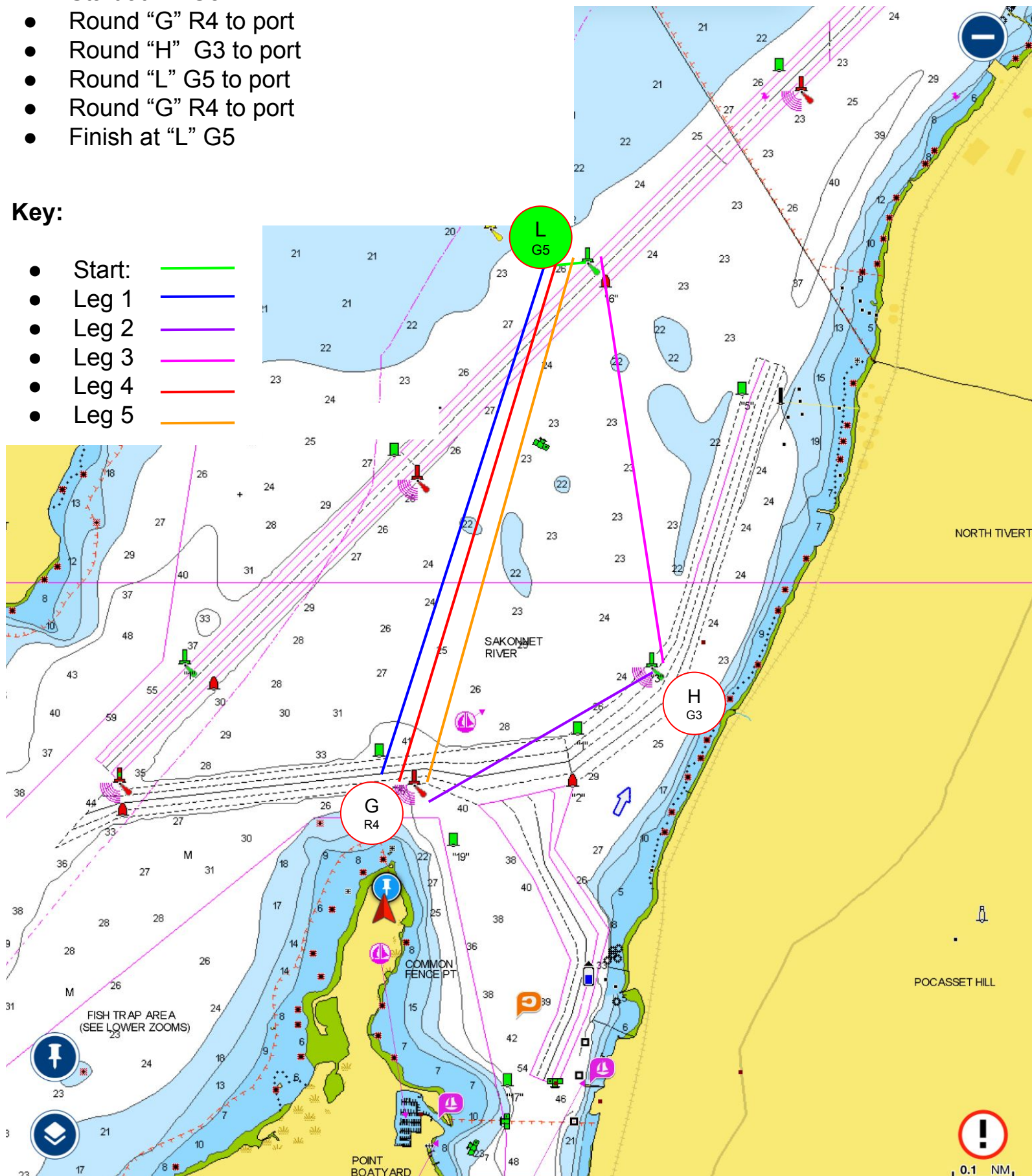
Course details:

- Start at "L" G5
- Round "G" R4 to port
- Round "H" G3 to port
- Round "L" G5 to port
- Round "G" R4 to port
- Finish at "L" G5

Preferred Short Course - After 3 legs, finish between "L" and Committee Boat - 2.82nm

Key:

- Start: 
- Leg 1: 
- Leg 2: 
- Leg 3: 
- Leg 4: 
- Leg 5: 



Course #9B [Ideal 205°, range 185° - 225°], 6.25nm

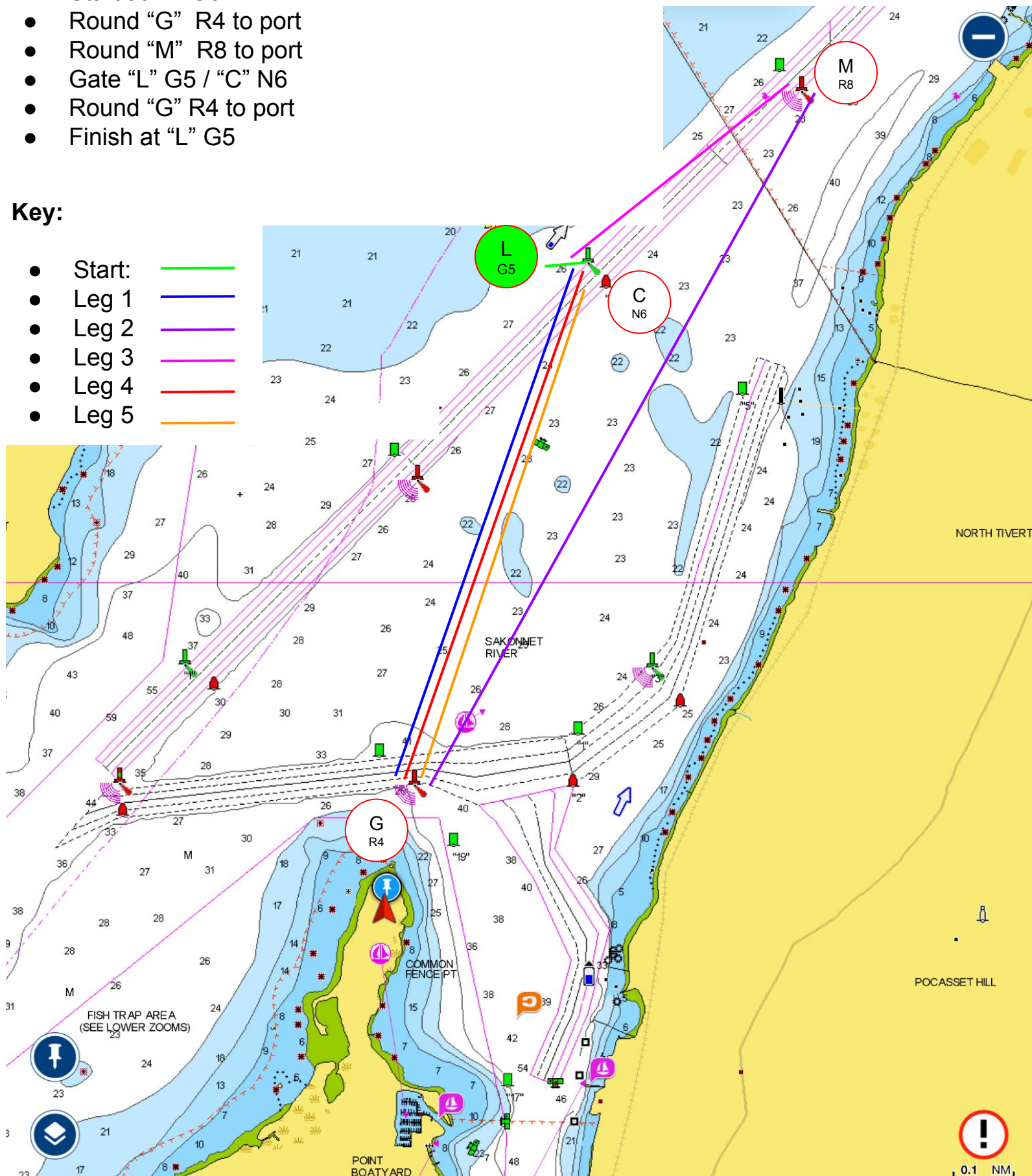
Course details:

- Start at "L" G5
- Round "G" R4 to port
- Round "M" R8 to port
- Gate "L" G5 / "C" N6
- Round "G" R4 to port
- Finish at "L" G5

Preferred Short Course - After 3 legs, finish between "L" and Committee Boat - 3.72nm

Key:

- Start: 
- Leg 1: 
- Leg 2: 
- Leg 3: 
- Leg 4: 
- Leg 5: 



Course #10B [Ideal 220°, range 200° - 230°], 5.23nm

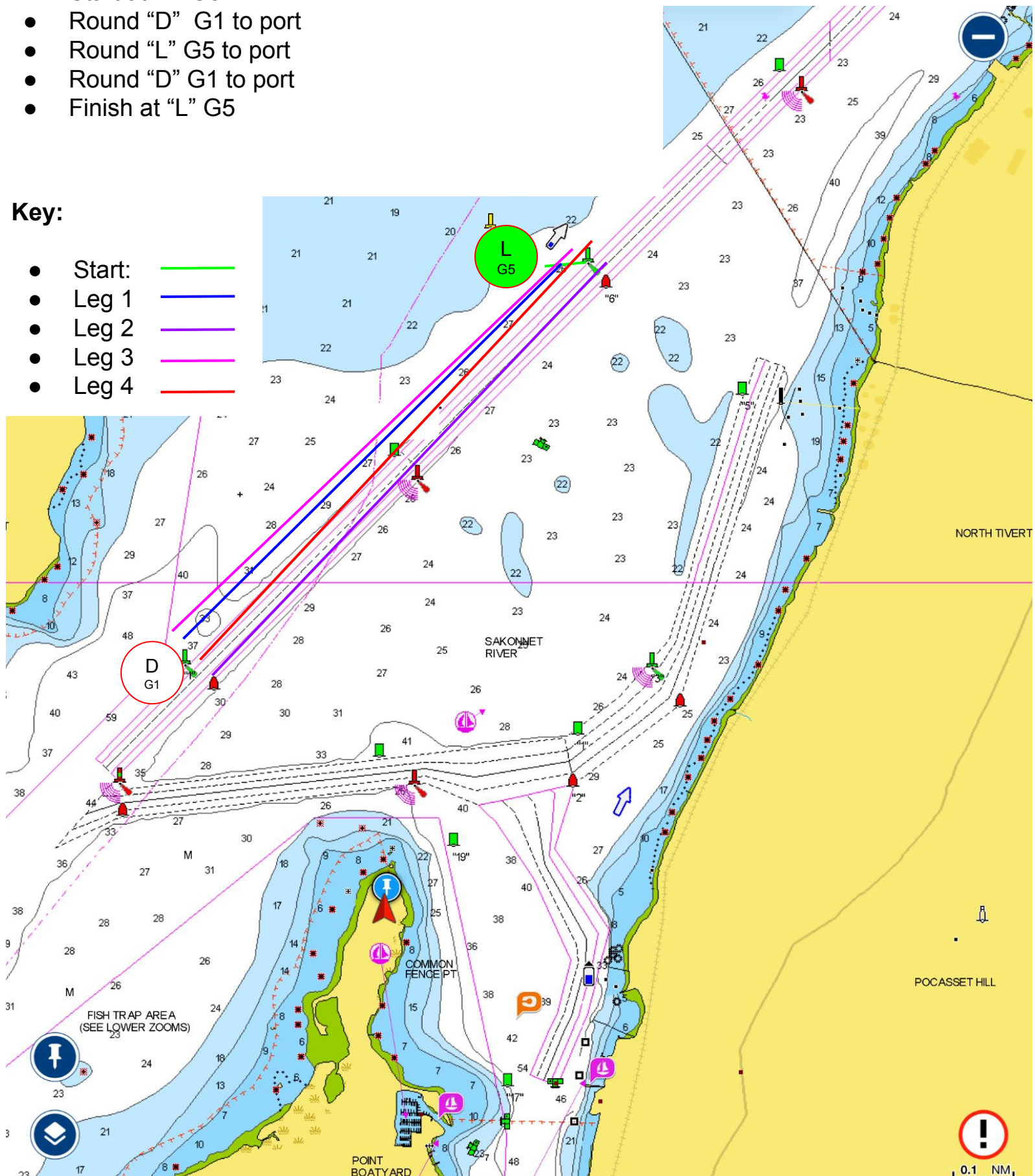
Course details:

- Start at "L" G5
- Round "D" G1 to port
- Round "L" G5 to port
- Round "D" G1 to port
- Finish at "L" G5

Preferred Short Course - After 2 legs, finish between "L" and Committee Boat - 2.62nm

Key:

- Start: 
- Leg 1: 
- Leg 2: 
- Leg 3: 
- Leg 4: 



Course #11B [Ideal 225°, range 210° - 250°], 6.44nm

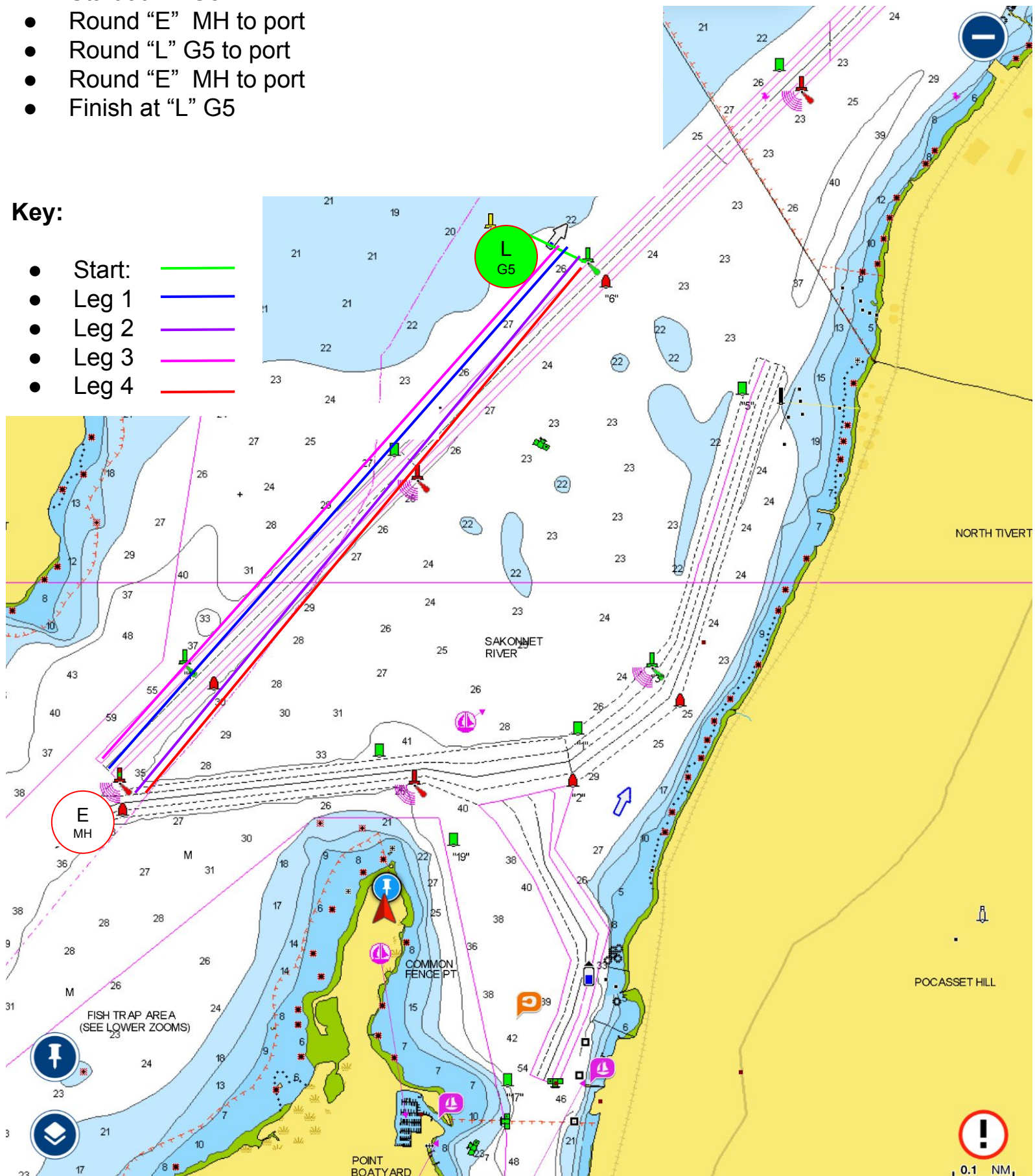
Course details:

Preferred Short Course - Finish at Gate between "L" and Committee Boat - 3.22nm

- Start at "L" G5
- Round "E" MH to port
- Round "L" G5 to port
- Round "E" MH to port
- Finish at "L" G5

Key:

- Start: 
- Leg 1: 
- Leg 2: 
- Leg 3: 
- Leg 4: 



Course #12B [Ideal 257°, range 235° - 275°], 4.33nm

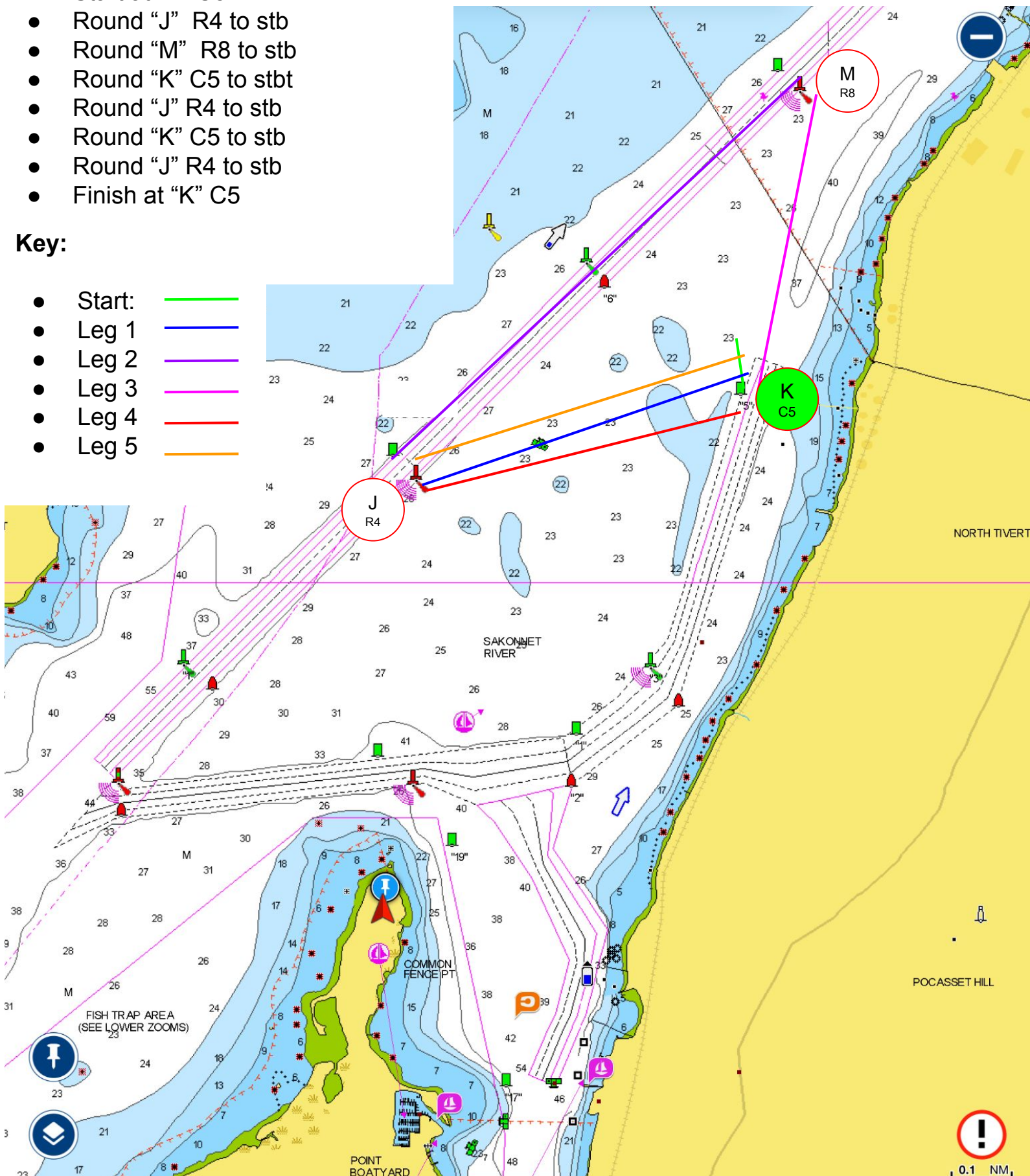
Preferred Short Course - After 3 legs, finish between "K" and Committee Boat - 2.73nm

Course details:

- Start at "K" C5
- Round "J" R4 to stb
- Round "M" R8 to stb
- Round "K" C5 to stbt
- Round "J" R4 to stb
- Round "K" C5 to stb
- Round "J" R4 to stb
- Finish at "K" C5

Key:

- Start: 
- Leg 1: 
- Leg 2: 
- Leg 3: 
- Leg 4: 
- Leg 5: 



Course #13B [Ideal 270°, range 255° - 300°], 4.58nm

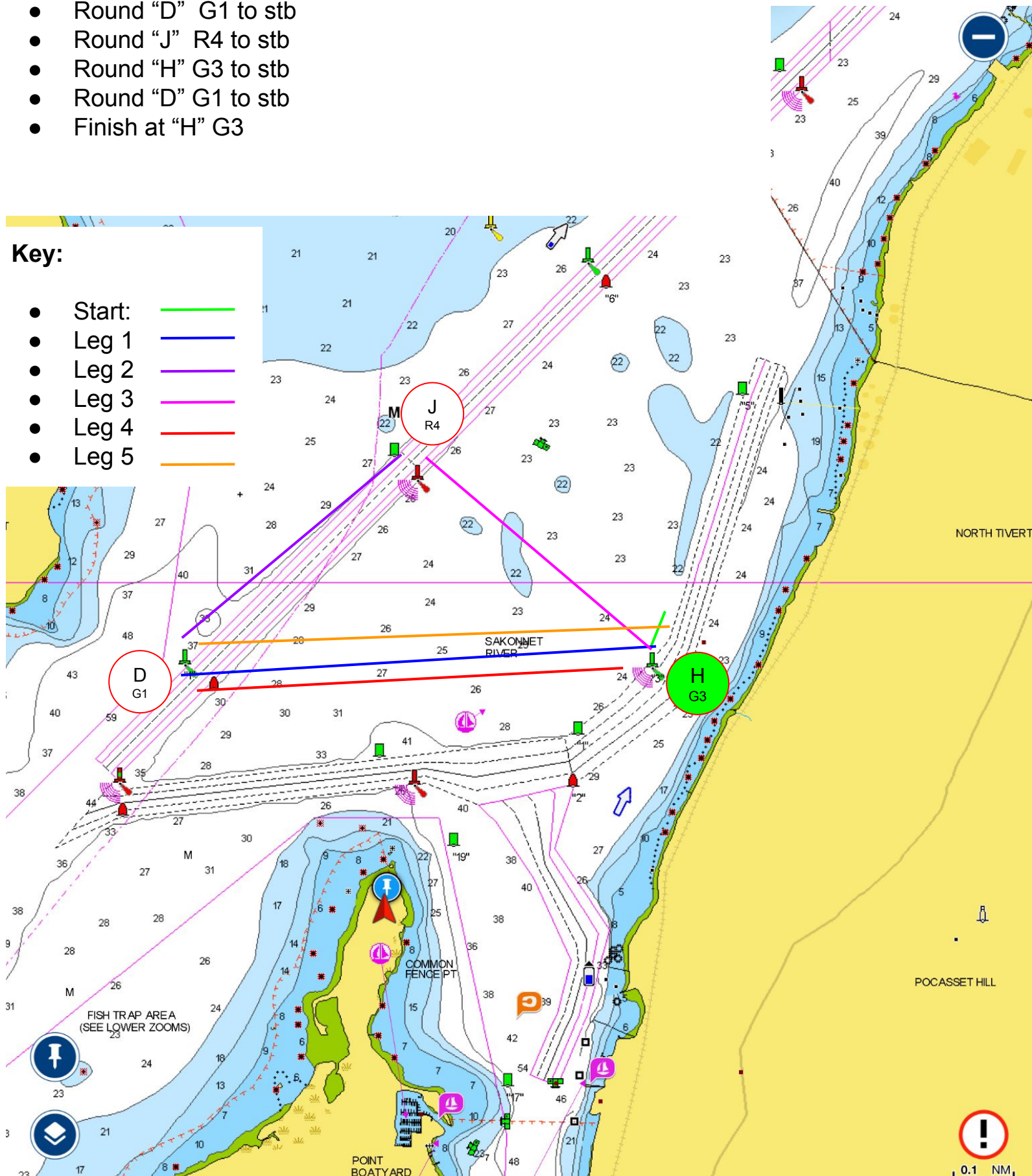
Course details:

- Start at "H" G3
- Round "D" G1 to stb
- Round "J" R4 to stb
- Round "H" G3 to stb
- Round "D" G1 to stb
- Finish at "H" G3

Preferred Short Course - After 3 legs, finish between "H" and Committee Boat - 2.44nm

Key:

- Start: 
- Leg 1: 
- Leg 2: 
- Leg 3: 
- Leg 4: 
- Leg 5: 



Course #14B [Ideal 320°, range 300°- 340°], 4.19nm

Course details:

- Start at "K" C5
- Round "L" G5 to port
- Round "H" G3 to stb
- Round "J" R4 to stb
- Round "H" G3 to port
- Round "L" G5 to stb
- Finish at "K" C5

No short course without moving RC boat

Key:

- Start: 
- Leg 1: 
- Leg 2: 
- Leg 3: 
- Leg 4: 
- Leg 5: 
- Leg 6: 

