

SIRA / TYC

2025 Course Packet Class A

(Version: 5.28.25)

Changes:

1. Course 1A - changed mark L to C-CB
2. Course 2A - added note for starting line placement
3. Course 7 - mark three converted to a gate
4. Course 11 - corrected an error in mark notation

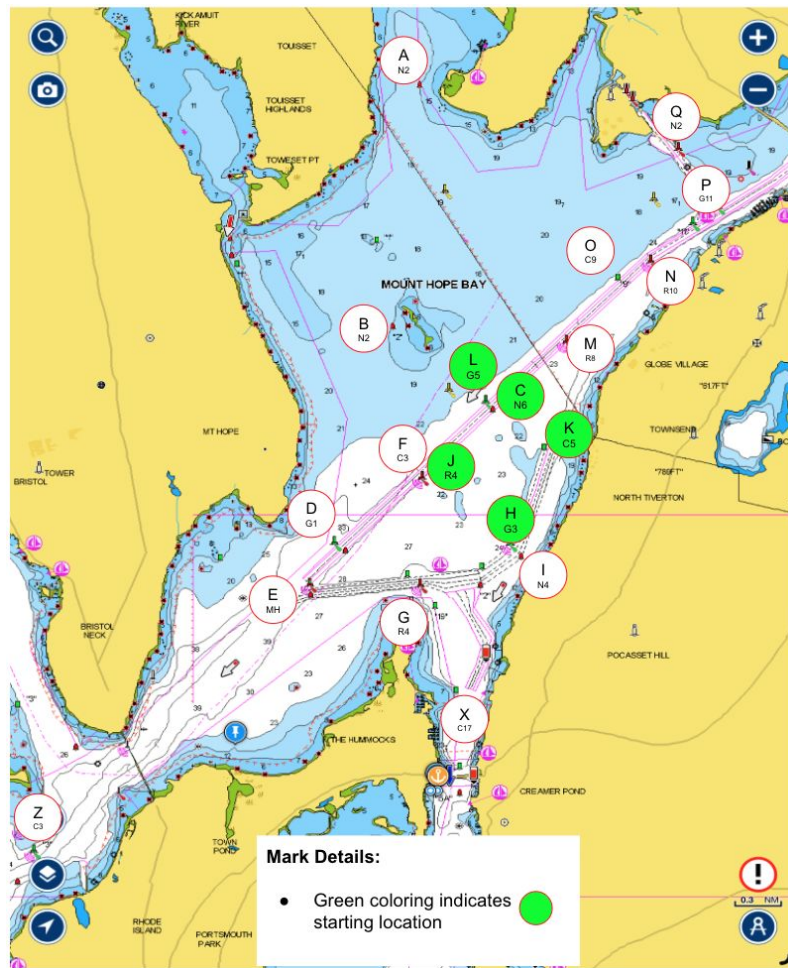
2 Class - Staggered Starting Sequence

2025 2 Class - Staggered Start

GPS Time	SIGNAL	SOUND	COMMENT	FLAGS
6:14	Come Around Signal	Multiple Short Blasts	1 minute before first warning	No Flag
6:15	WARNING	1 Blast	Display Pennant #1	 1
6:16	PREPARATORY B1	1 Blast	Display Prep #1 remains	 1 
6:19	1 MINUTE to B1 start	1 Blast	Remove Prep #1 remains	 1
6:20	START B1	1 Blast	Remove #1 Display Pennant #2	 2
6:21	PREPARATORY A1	1 Blast	Display prep #2 remains	 2 
6:24	1 MINUTE to A1 start	1 Blast	Remove prep #2 remains	 2
6:25	START A1	1 Blast	Remove #2 Display Pennant #3	 3
6:26	PREPARATORY B2	1 Blast	Display prep #3 remains	 3 
6:29	1 MINUTE to B2 start	1 Blast	Remove prep #3 remains	 3
6:30	START B2	1 Blast	Remove #3 Display Pennant #4	 4
6:31	PREPARATORY A2	1 Blast	Display prep #4 remains	 4 
6:34	1 MINUTE to A2 start	1 Blast	Remove prep #4 remains	 4
6:35	START A2	1 Blast	Remove #4 	No Flag

Spinnaker Class (A)

Marks and Courses



START L = G5 C.M.	A = N2 COLES RIVER	J = R4 C.M. Lt. Bell Bouy
START C = N6 C.M.	B = N2 SPAR ISLAND	K = C5 Tanks No. Tiverton
START K = C5 TIVERTON	C = N6 C.M.	L = G5 C.M. FL G 4s Lt Bouy
START J = R4 C.M.	D = G1 C.M.	M = R8 C.M. Lt. Bell Bouy
START H = G3 Tiverton	E = MH C.M. Mt. Hope Junction gong	N = R10 C.M. Lt. Bell Bouy
	F = C3 C.M.	O = C9 C.M.
	G = R4 FL. R 4s Bell Common Fence Pt.	P = G11 C.M. FL G 4s
C/B = Comm. Boat	H = G3 FL. G 4s Gong Tiverton Shore	Q = N2 NEP FI/R 4s
C.M. = Channel Marker	I = N4 Tiverton Shore	X = C17 Sak. River
		Z = C3 (South of Hog Island Light)

Course		Start	1st	2nd		3rd		4th		5th		6th		7th		Wind (M)	
	NM		Mark	NM	Mark	NM	Mark	NM	Mark	NM	Mark	NM	Mark	NM	Mark	NM	
1	7.03	C	A-p	2.17	L-s	4.28	G-p	5.54	H-p	6.14	C(Fin)	7.03					N (350°)
2	6.53	K	Q-p	2.07	K-p	4.13	O-p	5.33	K(Fin)	6.53							NE(20°)
3	6.20	C	P-p	1.73	C-p	3.46	N-p	4.83	C(Fin)	6.20							ENE(45°)
4	5.94	J	K-s	0.77	E-s	2.45	Gate(J -CB) 3.43		K-p	4.20	J(Fin)	4.97					ENE(75°)
5	5.99	L	K-p	0.47	A-p	2.95	Gate(J -CB) 5.06		K-p	5.52	L(Fin)	5.99					SE(135°)
6	6.39	L	H-s	0.94	X-s	1.96	L-p 3.86		G-p	5.13	L(Fin)	6.39					S (180°)
7	6.74	L	G-p	1.26	L-p	2.53	A-p	4.63	L(Fin)	6.74							SSW (185°)
8	6.34	L	X-p	1.90	L-p	3.81	G-p	5.07	L(Fin)	6.34							SSW (190°)
9	6.25	L	G-p	1.26	M-p	3.09	Gate(L -CB) 3.72		G-p	4.98	L(Fin)	6.25					SSW (205°)
10	6.42	L	E-p	1.61	H-p	2.86	L-p 3.80		D-p	5.11	L(Fin)	6.42					WSW (220°)
11	8.07	L	Z-p	4.04	L(Fin)	8.07											WSW (225°)
12	5.81	K	J-s	0.77	M-2	2.02	K-p	2.73	J-s	3.50	K-s	4.27	J-s	5.04	K(Fin)	5.81	WSW (250°)
13	6.72	H	D-s	1.07	J-s	1.75	H-s	2.44	D-s	3.51	H-s	4.58	D-s	5.65	H(Fin)	6.72	W (270°)
14	5.85	K	C-s	0.40	M-p	1.03	A-p	2.93	M-s	4.82	C-p	5.45	K(Fin)	5.85			NNW (320°)

Course #1 [Ideal 350°, range 335°-15°], 7.03nm

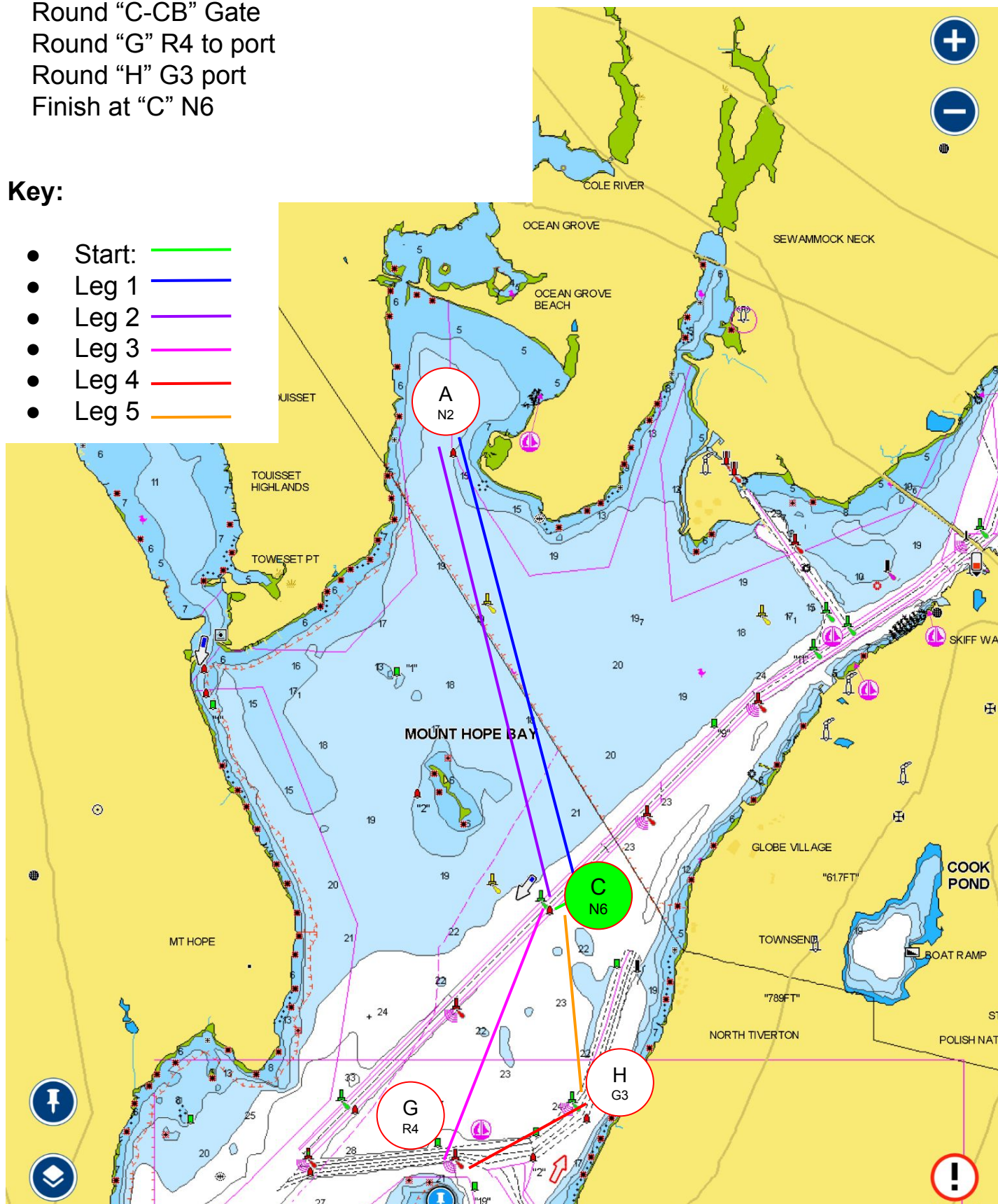
Course details:

- Start at "C" N6
- Round "A" N2 to port
- Round "C-CB" Gate
- Round "G" R4 to port
- Round "H" G3 port
- Finish at "C" N6

Preferred Short Course - After 2 legs, finish between "C" and Committee Boat - 4.28nm

Key:

- Start: 
- Leg 1: 
- Leg 2: 
- Leg 3: 
- Leg 4: 
- Leg 5: 



Course #2 [Ideal 20°, range 5° - 35°], 6.53nm

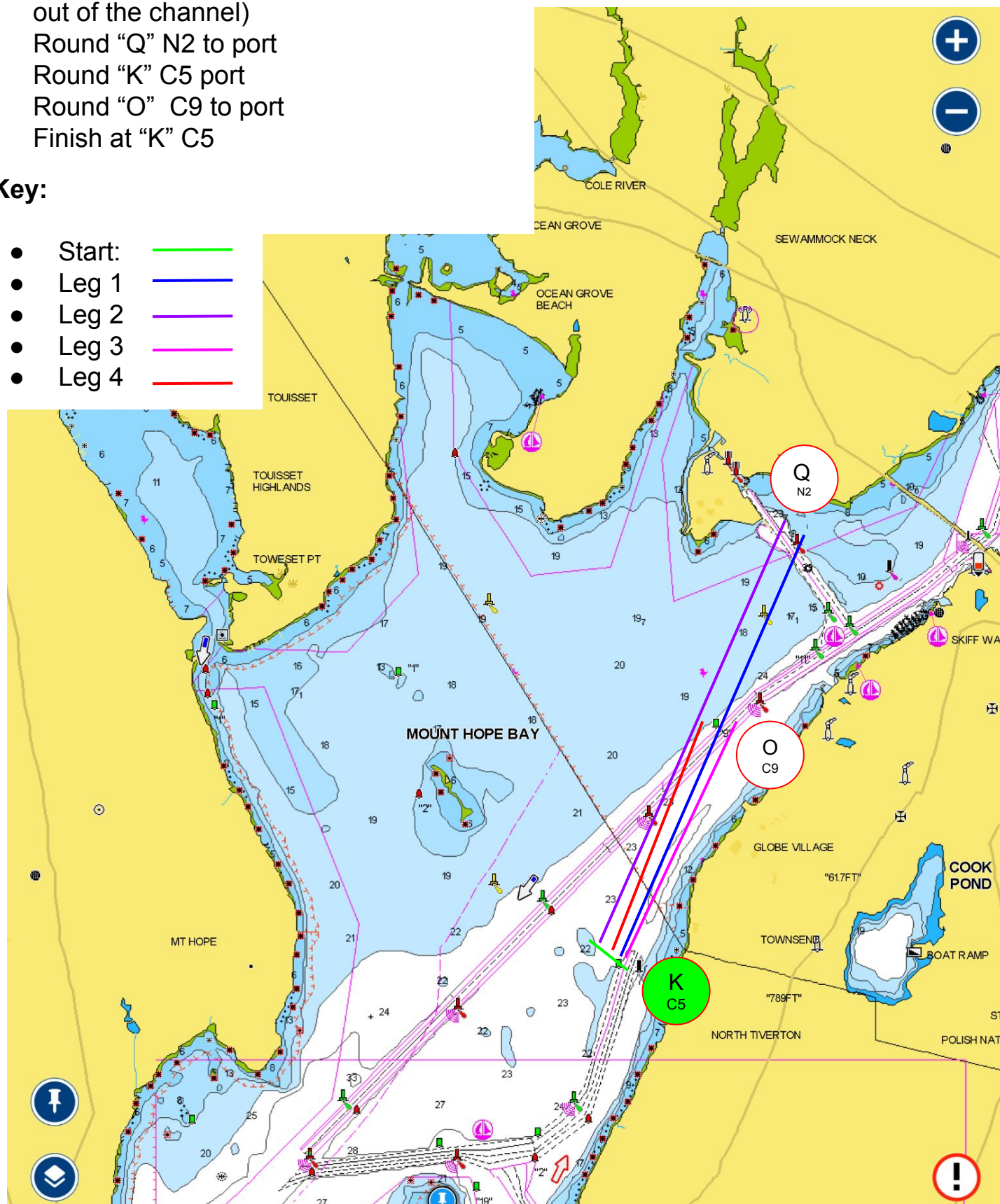
Course details:

- Start at "K" C5 (strong preference to set the CB at the port end of the line to stay out of the channel)
- Round "Q" N2 to port
- Round "K" C5 port
- Round "O" C9 to port
- Finish at "K" C5

Key:

- Start: 
- Leg 1: 
- Leg 2: 
- Leg 3: 
- Leg 4: 

Preferred Short Course - After 2 legs, finish between "K" and Committee Boat - 4.13nm



Course #3 [Ideal 45°, range 25°- 65°], 6.2nm

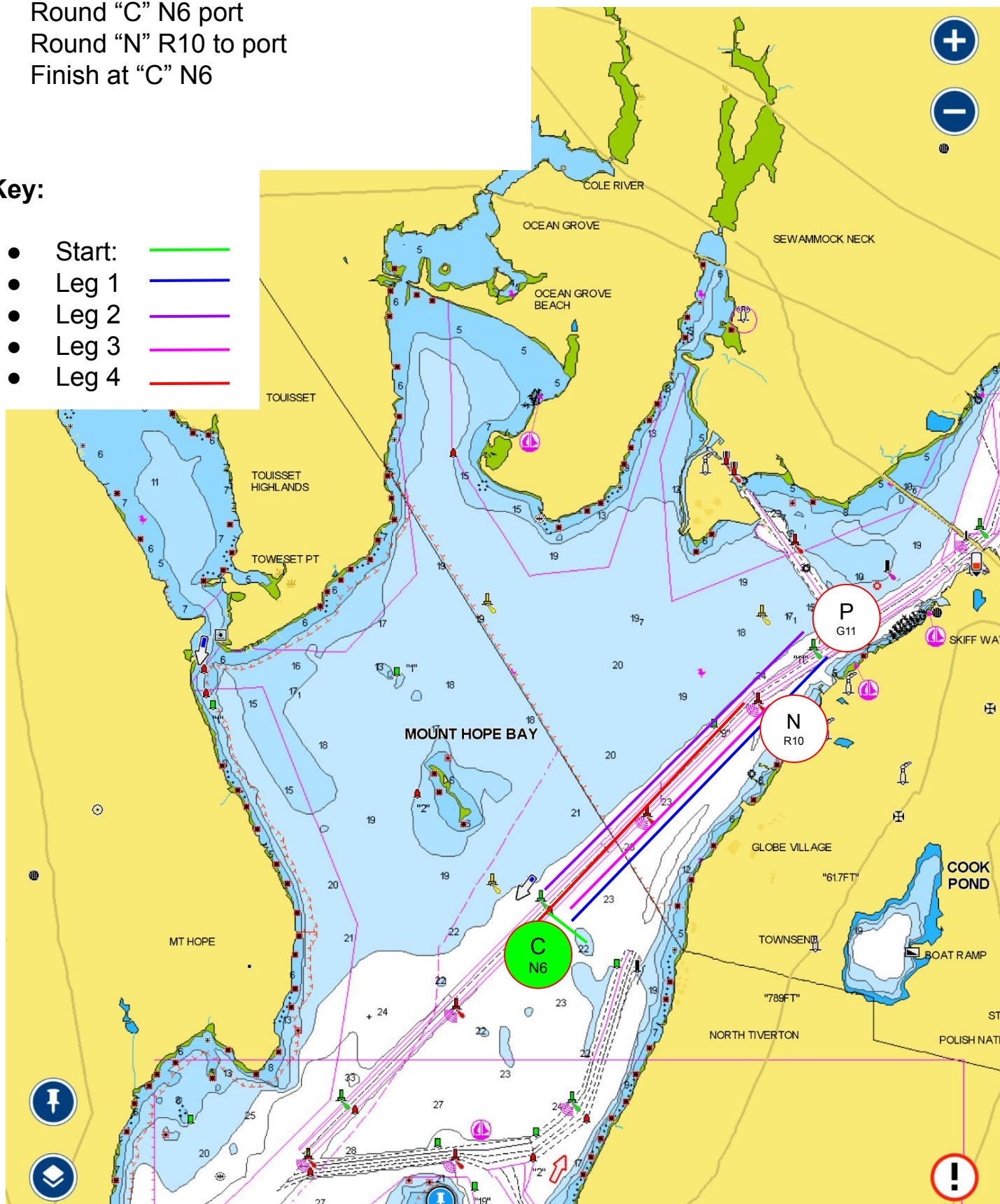
Course details:

- Start at "C" N6
- Round "P" G11 to port
- Round "C" N6 port
- Round "N" R10 to port
- Finish at "C" N6

Preferred Short Course - After 2 legs, finish between "C" and Committee Boat - 3.46nm

Key:

- Start: 
- Leg 1: 
- Leg 2: 
- Leg 3: 
- Leg 4: 



Course #4 [Ideal 75°, range 55°- 100°], 4.97nm

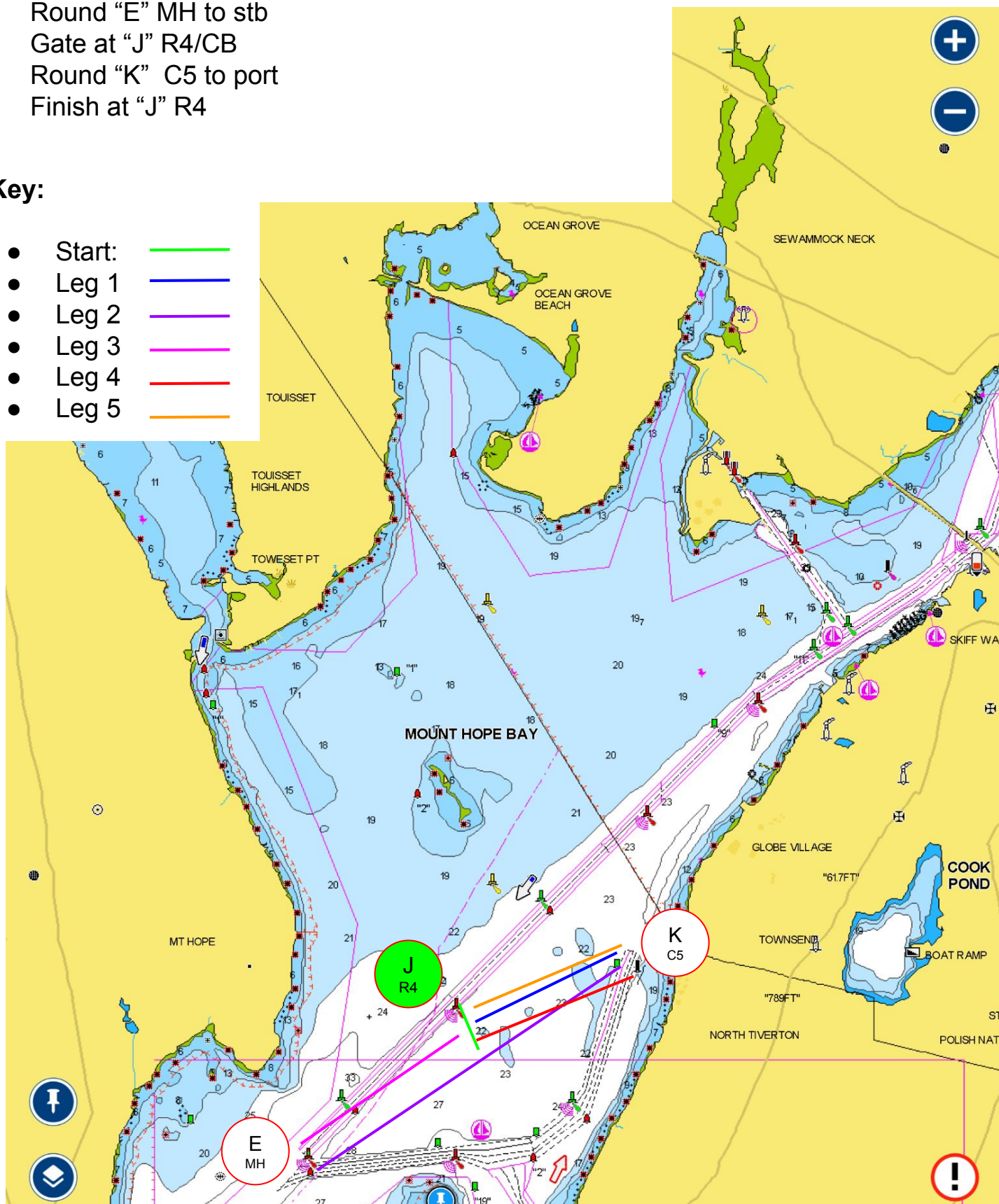
Course details:

- Start at “J” R4
- Round “K” C5 to stb
- Round “E” MH to stb
- Gate at “J” R4/CB
- Round “K” C5 to port
- Finish at “J” R4

Preferred Short Course - Finish at Gate
between "J" and Committee Boat - 3.43nm

Key:

- Start: 
- Leg 1 
- Leg 2 
- Leg 3 
- Leg 4 
- Leg 5 



Course #5 [Ideal 135°, range 110°-160°], 5.99nm

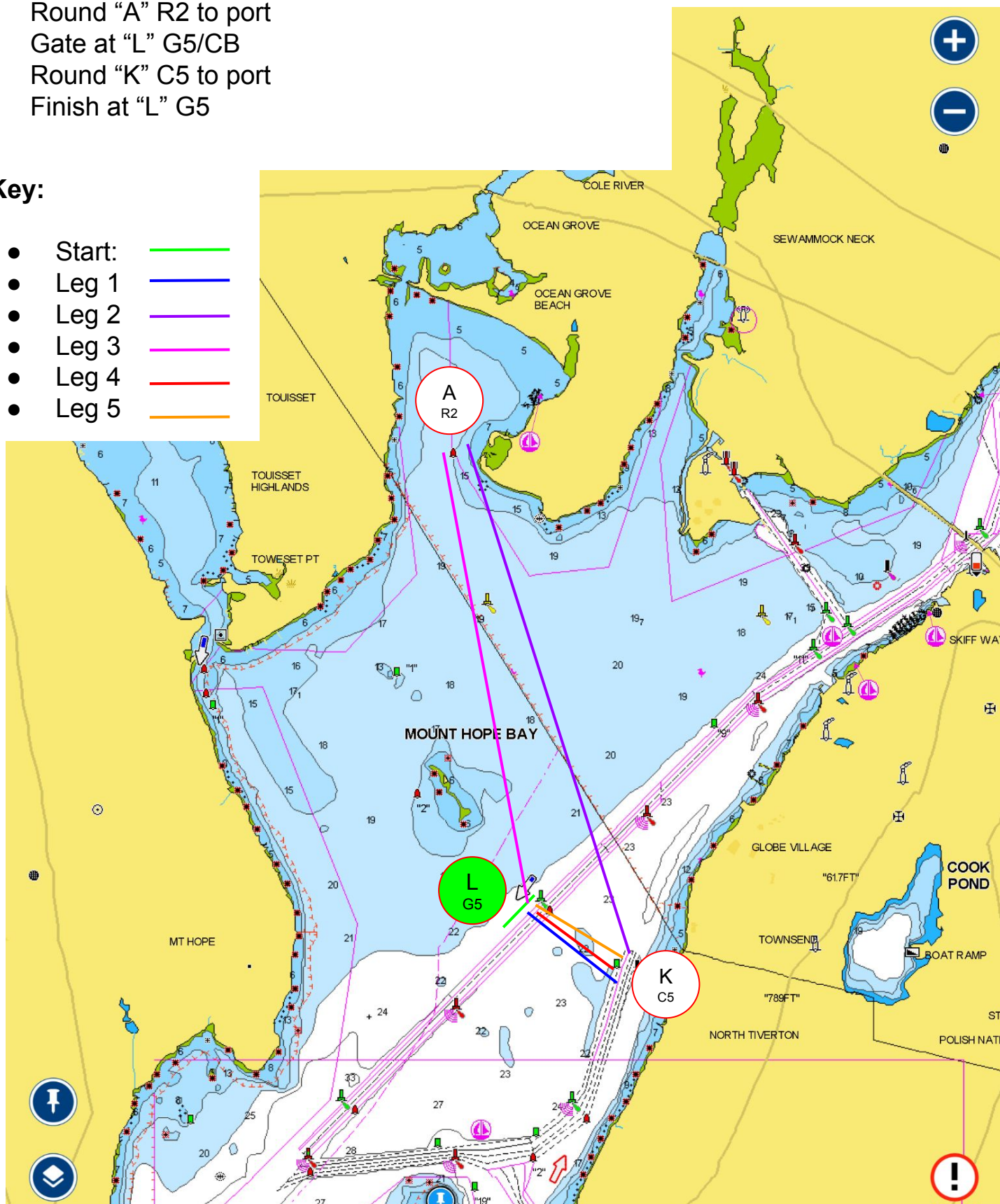
Course details:

- Start at "L" G5
- Round "K" C5 to port
- Round "A" R2 to port
- Gate at "L" G5/CB
- Round "K" C5 to port
- Finish at "L" G5

Preferred Short Course - Finish at Gate
between "L" G5 and Committee Boat - 5.06nm

Key:

- Start: 
- Leg 1: 
- Leg 2: 
- Leg 3: 
- Leg 4: 
- Leg 5: 



Course #6 [Ideal 180°, range 160°-200°], 6.39nm

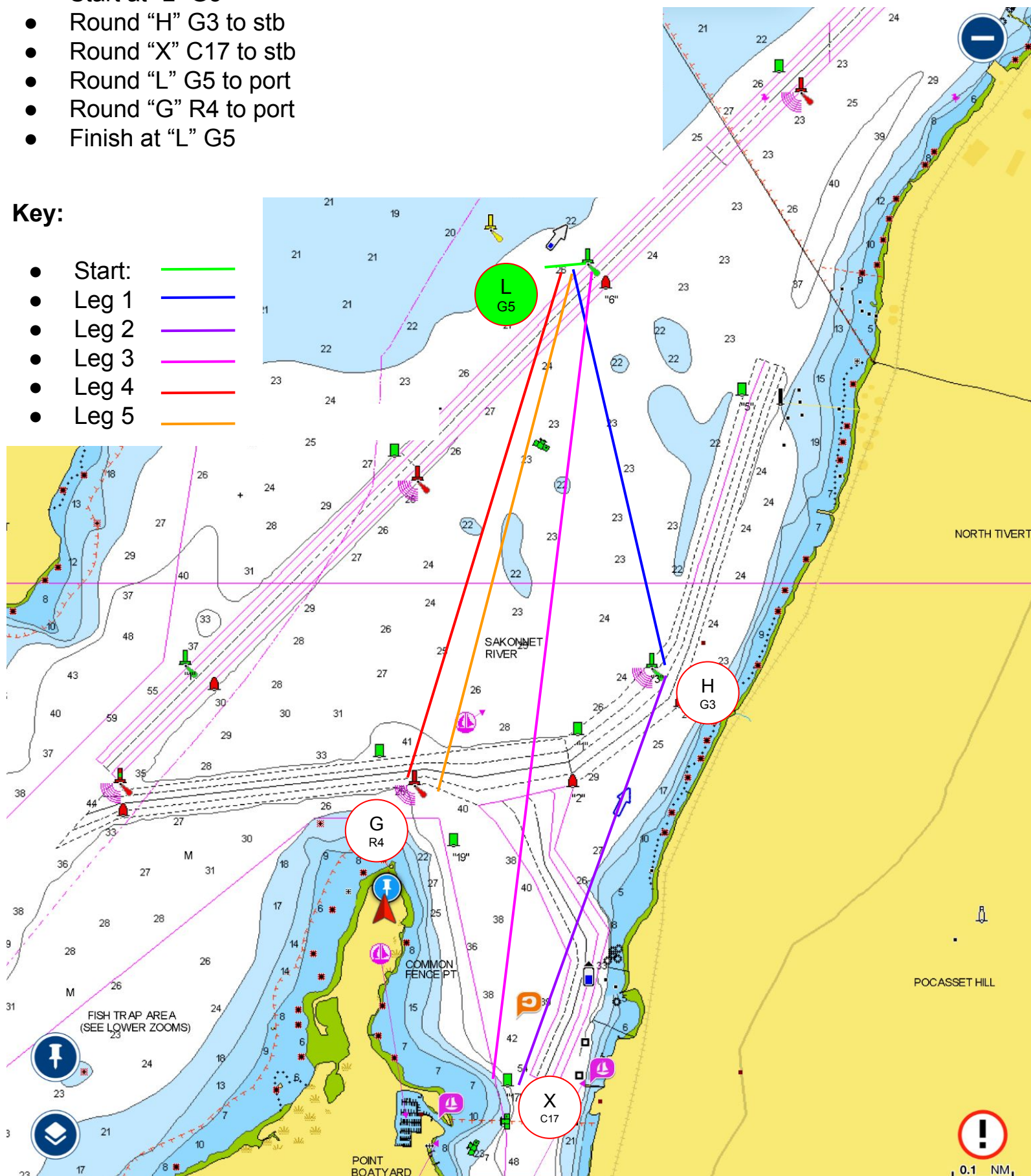
Course details:

- Start at "L" G5
- Round "H" G3 to stb
- Round "X" C17 to stb
- Round "L" G5 to port
- Round "G" R4 to port
- Finish at "L" G5

Preferred Short Course - After 3 legs, finish between "L" and Committee Boat - 3.86nm

Key:

- Start: 
- Leg 1: 
- Leg 2: 
- Leg 3: 
- Leg 4: 
- Leg 5: 



Course #7 [Ideal 185°, range 165° - 205°], 6.74nm

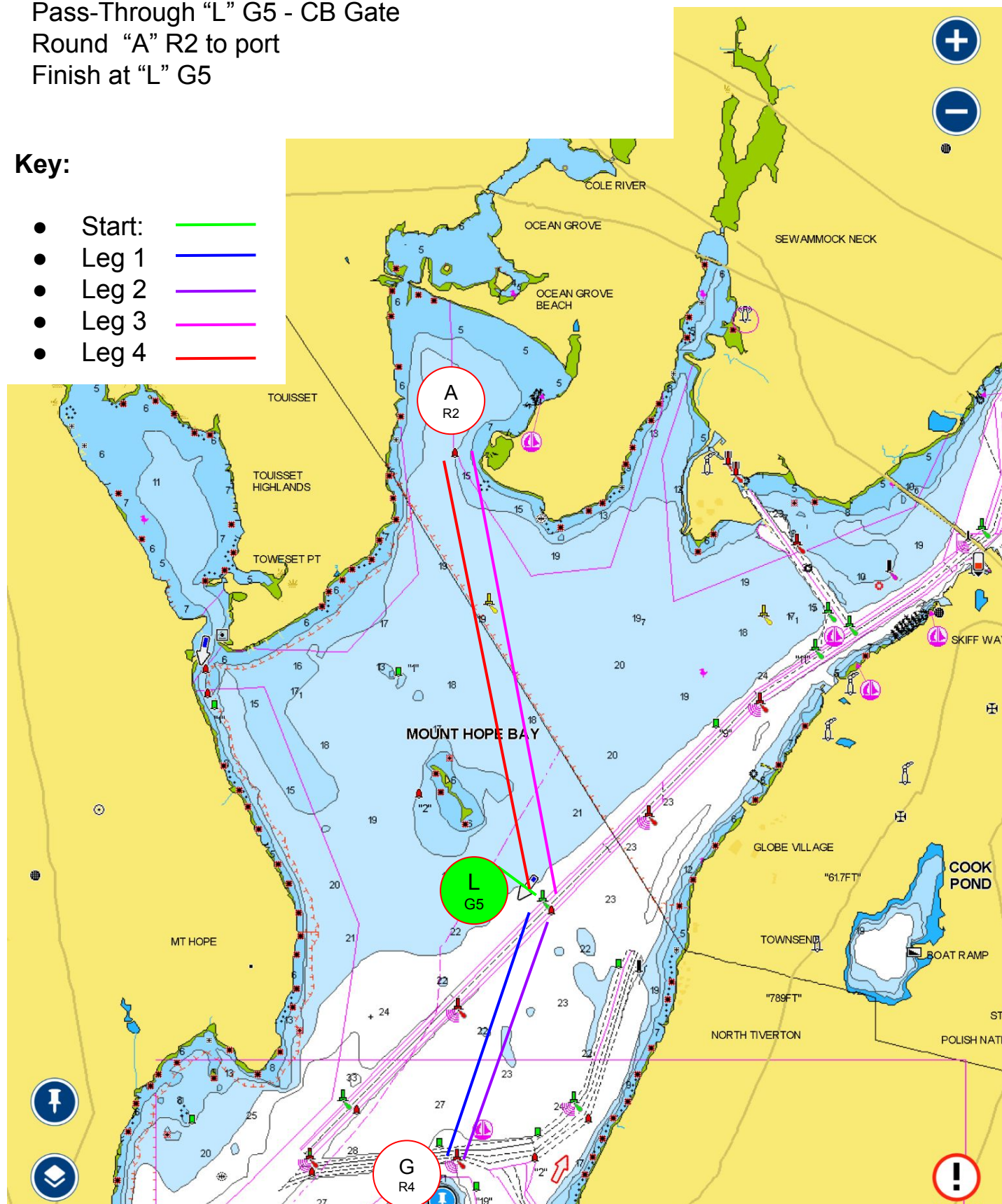
Course details:

- Start at "L" G5
- Round "G" R4 to port
- Pass-Through "L" G5 - CB Gate
- Round "A" R2 to port
- Finish at "L" G5

Preferred Short Course - After 2 legs, finish between "L" and Committee Boat - 2.53nm

Key:

- Start: 
- Leg 1: 
- Leg 2: 
- Leg 3: 
- Leg 4: 



Course #8 [Ideal 190°, range 170° - 210°], 6.34nm

Course details:

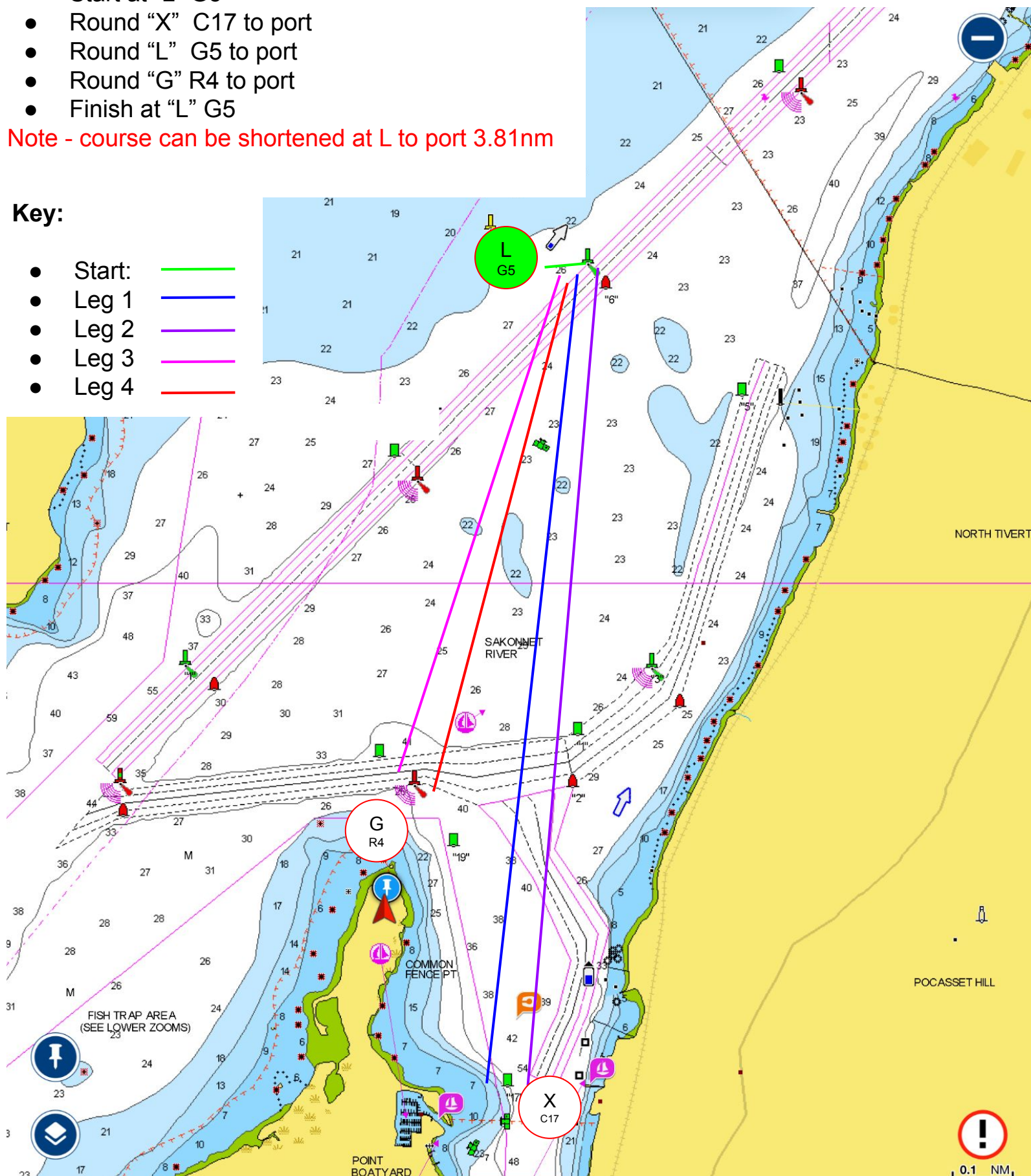
- Start at "L" G5
- Round "X" C17 to port
- Round "L" G5 to port
- Round "G" R4 to port
- Finish at "L" G5

Preferred Short Course - After 2 legs, finish between "L" and Committee Boat - 3.81nm

Note - course can be shortened at L to port 3.81nm

Key:

- Start: 
- Leg 1: 
- Leg 2: 
- Leg 3: 
- Leg 4: 



Course #9 [Ideal 205°, range 185° - 225°], 6.25nm

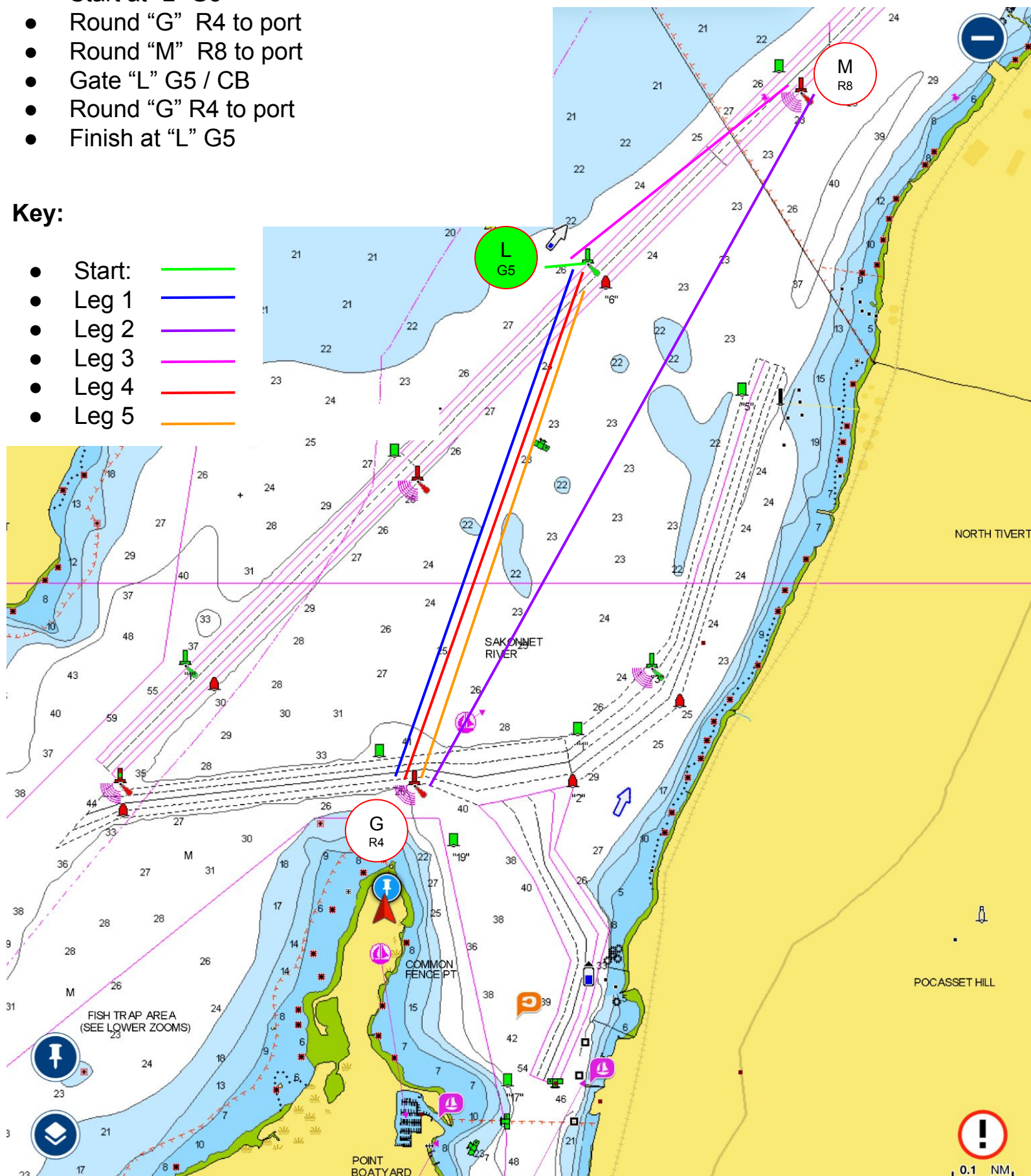
Course details:

- Start at "L" G5
- Round "G" R4 to port
- Round "M" R8 to port
- Gate "L" G5 / CB
- Round "G" R4 to port
- Finish at "L" G5

Preferred Short Course - Finish at Gate between "L" and Committee Boat - 3.72nm

Key:

- Start: 
- Leg 1: 
- Leg 2: 
- Leg 3: 
- Leg 4: 
- Leg 5: 



Course #10 [Ideal 220°, range 200°- 230°], 6.42nm

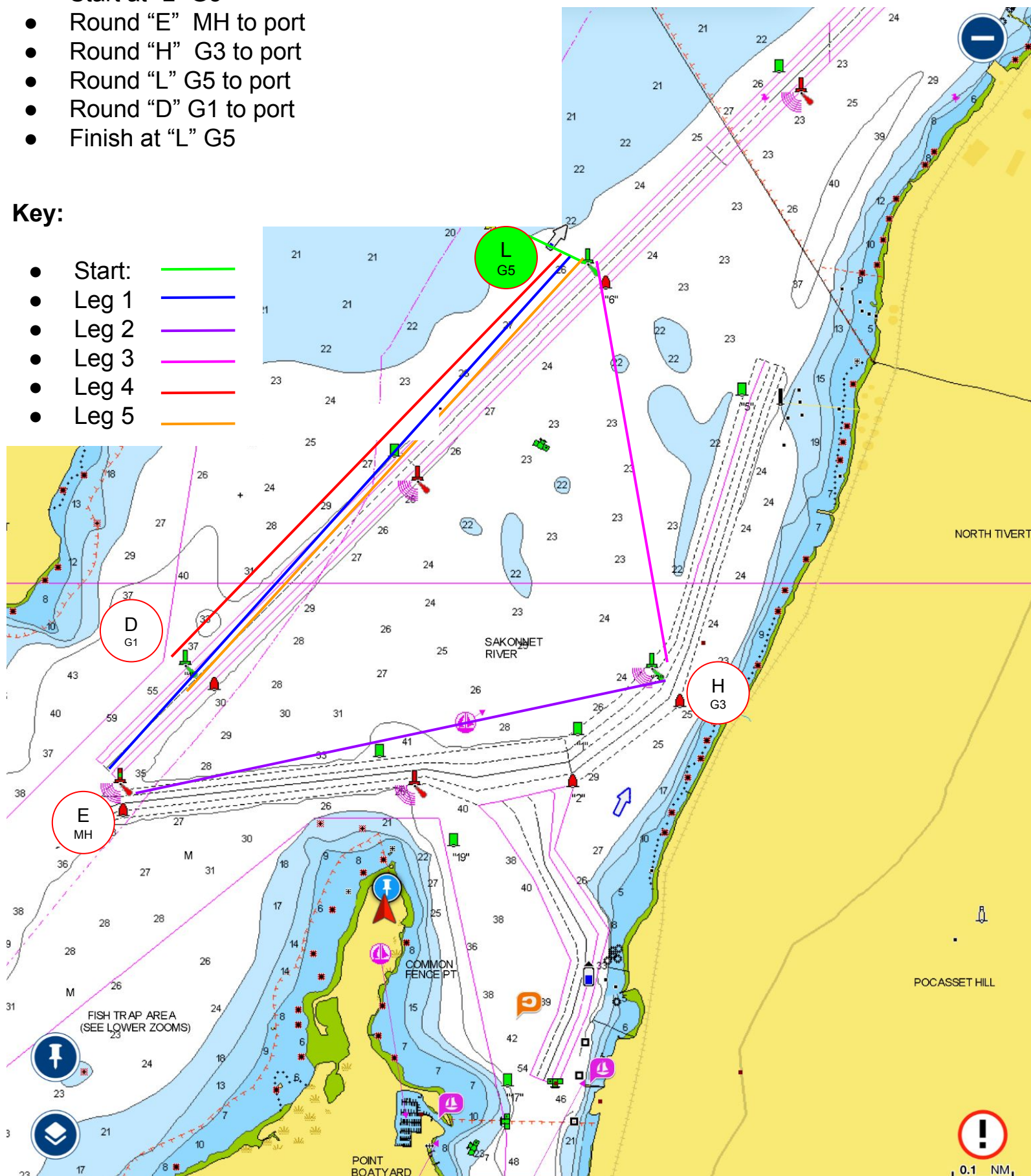
Course details:

- Start at "L" G5
- Round "E" MH to port
- Round "H" G3 to port
- Round "L" G5 to port
- Round "D" G1 to port
- Finish at "L" G5

Preferred Short Course - After 3 legs, finish between "L" and Committee Boat - 3.8nm

Key:

- Start: 
- Leg 1: 
- Leg 2: 
- Leg 3: 
- Leg 4: 
- Leg 5: 






Course #11 [Ideal 225°, range 210° - 250°], 8.07nm

Course details:

No short course

- Start at "L" G5
- Round "Z" G3 to port (green bell just south of Hog Island Light)
- Proceed to finish between "L" and RC
- Must pass through the center span of the Mount Hope Bridge in both directions

Key:

- Start: 
- Leg 1: 
- Leg 2: 



Course #12 [Ideal 257°, range 235° - 275°], 5.81nm

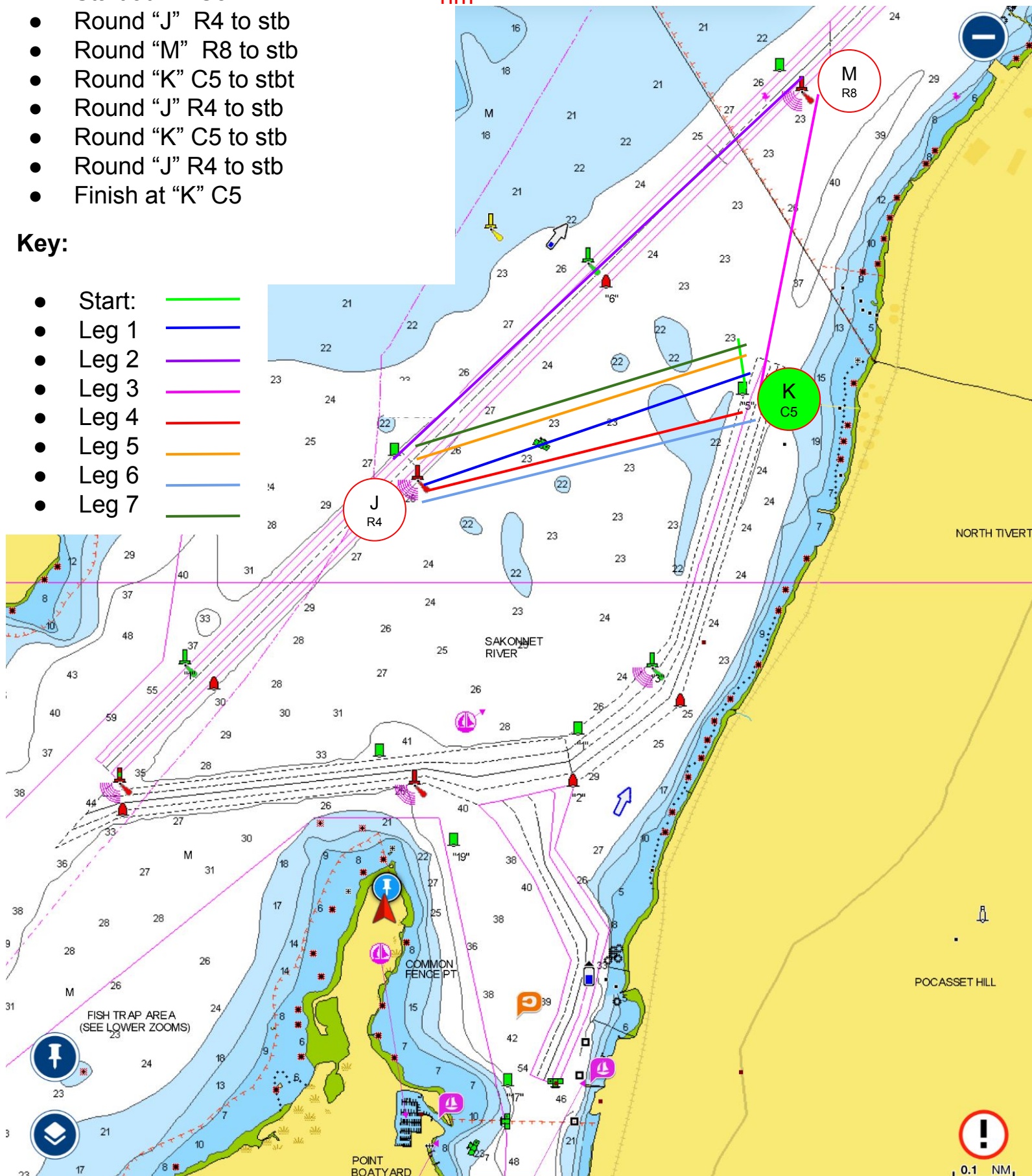
Course details:

- Start at "K" C5
- Round "J" R4 to stb
- Round "M" R8 to stb
- Round "K" C5 to stbt
- Round "J" R4 to stb
- Round "K" C5 to stb
- Round "J" R4 to stb
- Finish at "K" C5

Key:

- Start: 
- Leg 1: 
- Leg 2: 
- Leg 3: 
- Leg 4: 
- Leg 5: 
- Leg 6: 
- Leg 7: 

Preferred Short Course - After 3 legs, finish between "K" and Committee Boat - 2.73nm or after 5 between "K" and Committee Boat - 4.27 nm



Course #13 [Ideal 270°, range 255°- 300°], 6.72nm

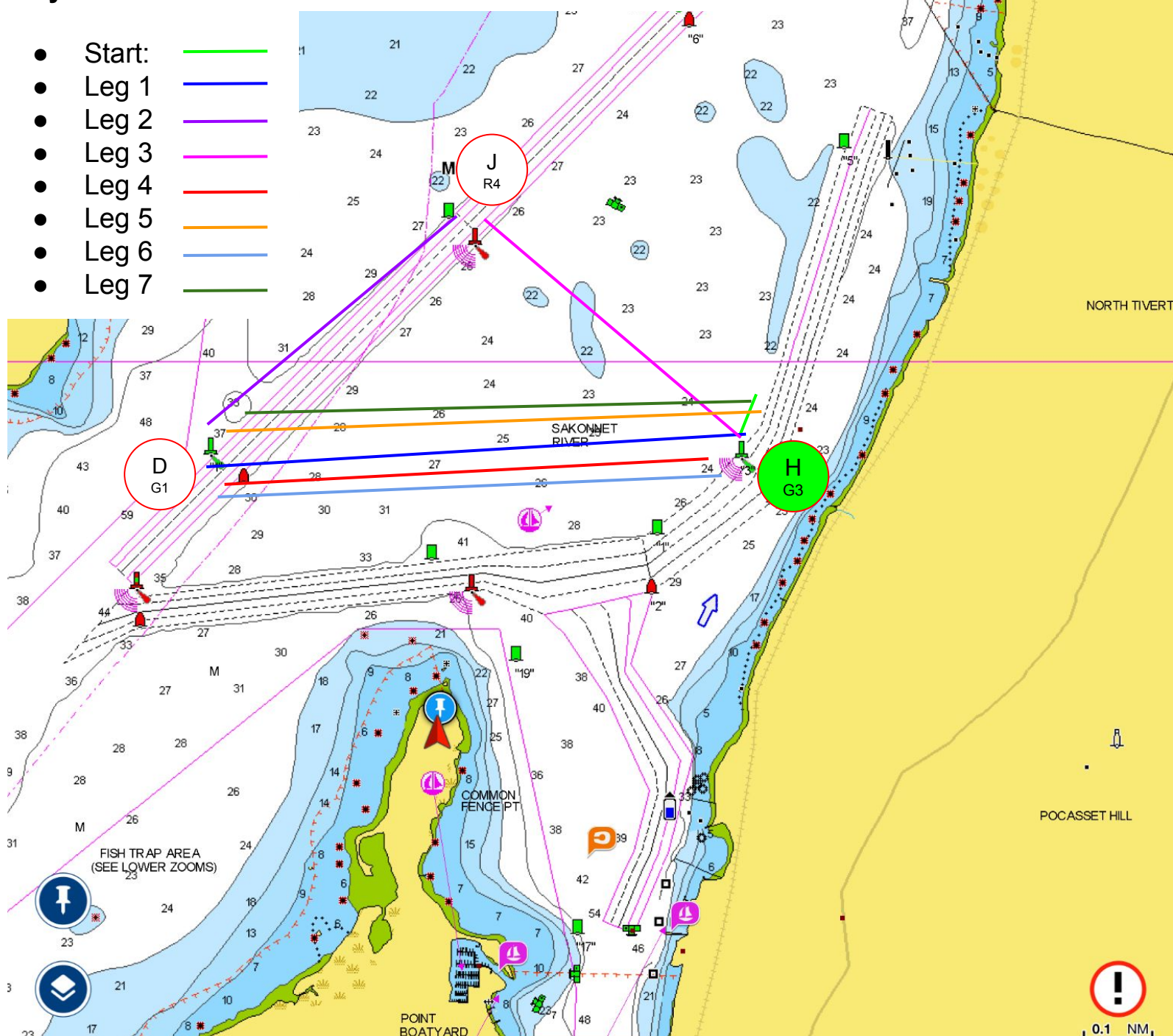
Course details:

- Start at "H" G3
- Round "D" G1 to stb
- Round "J" R4 to stb
- Round "H" G3 to stb
- Round "D" G1 to stb
- Round "H" G3 to stb
- Round "D" G1 to stb
- Finish at "H" G3

Preferred Short Course - After 3 legs, finish between "H" and Committee Boat - 2.44nm or after 5 between "H" and Committee Boat - 4.58 nm

Key:

- Start: 
- Leg 1: 
- Leg 2: 
- Leg 3: 
- Leg 4: 
- Leg 5: 
- Leg 6: 
- Leg 7: 



Course #14 [Ideal 320°, range 300°- 340°], 5.85nm

Course details:

- Start at "K" C5
- Round "C" R6 to stb
- Round "M" R8 to port
- Round "A" R2 to port
- Round "M" R8 to stb
- Round "C" R6 to port
- Finish at "K" C5

No Short Course, without moving the CB

Note - no short course

Key:

- Start: 
- Leg 1: 
- Leg 2: 
- Leg 3: 
- Leg 4: 
- Leg 5: 
- Leg 6: 

